

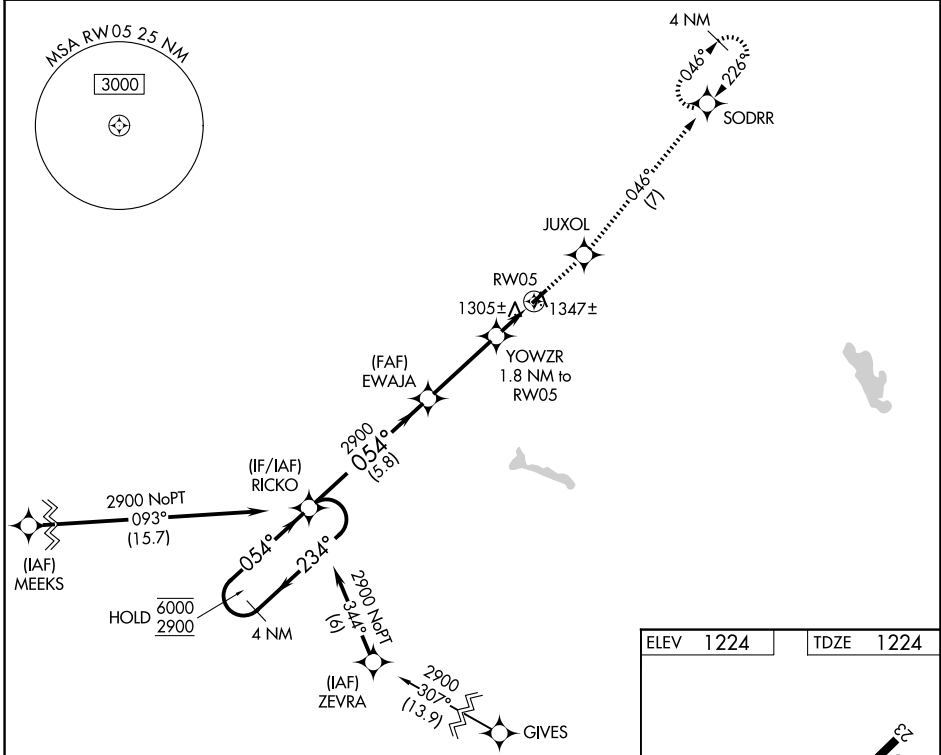
WAAS CH <b>69223</b> <b>W05A</b>	APP CRS <b>054°</b>	Rwy Ldg TDZE Apt Elev	<b>3318</b> <b>1224</b> <b>1224</b>
--	------------------------	-----------------------------	---

# RNAV (GPS) RWY 5

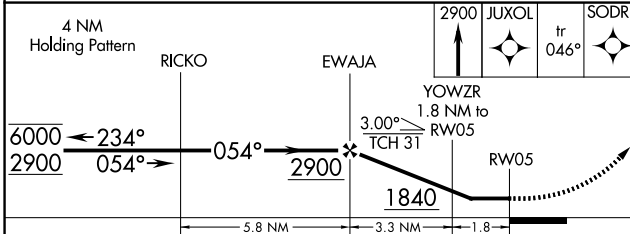
GALLION MUNI (GQQ)

RNP APCH - GPS.	MISSED APPROACH: Climb to 2900 direct JUXOL and on track 046° to SODRR and hold.
▼ Rwy 5 helicopter visibility reduction below 1 SM NA. ▲ NA Straight-in Rwy 5 NA at night, Circling Rwy 5 NA at night. Use MFD altimeter setting.	

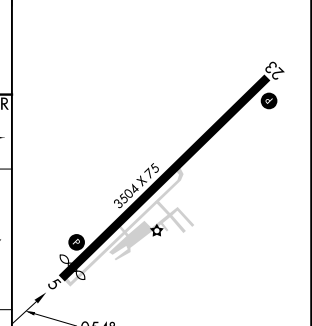
MFD ASOS <b>125.3</b>	CLEVELAND APP CON * <b>128.35 360.65</b>	CLNC DEL <b>126.8</b>	UNICOM <b>122.8 (CTAF) 0</b>
--------------------------	---	--------------------------	---------------------------------



ELEV 1224	TDZE 1224
-----------	-----------



CATEGORY	A	B	C	D
LP MDA	1600-1 376 (400-1)			NA
LNNAV MDA	1640-1	416 (500-1)	1640-1½ 416 (500-1½)	NA
CIRCLING	1740-1 516 (600-1)	1960-1 736 (800-1)	1960-2 736 (800-2)	NA



MIRL Rwy 5-23 0	REIL Rwy 5 and 23 0
-----------------	---------------------

EC-2, 14 MAY 2026 to 11 JUN 2026

EC-2, 14 MAY 2026 to 11 JUN 2026