

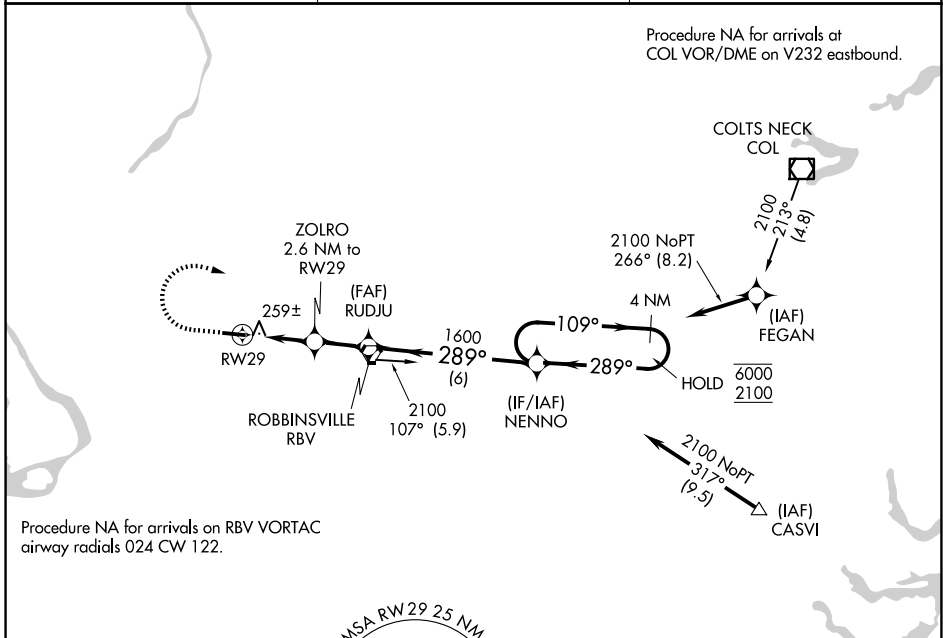
APP CRS	Rwy Ldg	3975
289°	TDZE	118
	Apt Elev	118

RNAV (GPS) RWY 29

TRENTON-ROBBINSVILLE (N87)

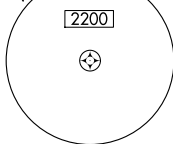
RNP APCH.	MISSED APPROACH: Climb to 1000, then climbing right turn to 2100 direct NENNO and hold.
<p>▼ Procedure NA at night. Rwy 29 helicopter visibility reduction below 1 SM NA. Use Wrightstown altimeter setting.</p> <p>▲ NA</p>	

MC GUIRE APP CON 126.475 363.8	UNICOM 123.0 (CTAF)	123.3 0
--	-------------------------------	-----------------------

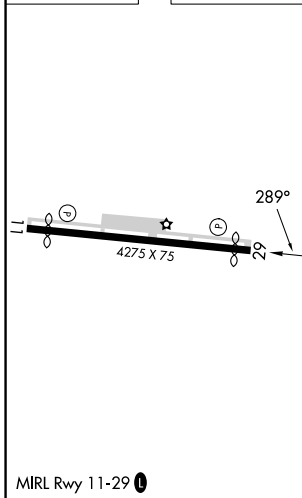


Procedure NA for arrivals on RBV VORTAC airway radials 024 CW 122.

MSA RWY 29 25 NM



ELEV 118	TDZE 118
----------	----------



1000	2100	NENNO	Visual Segment - Obstacles.			
			RUDJU	NENNO	4 NM Holding Pattern	
			ZOLRO 2.6 NM to RWY 29		109° → 6000	← 289° 2100
			RWY 29		289°	1600
			2.6 NM	1.9 NM	6 NM	
CATEGORY	A	B	C	D		
LNAV MDA	540-1	422 (500-1)	540-1½	422 (500-1½)		
CIRCLING	680-1	562 (600-1)	680-1½	562 (600-1½)	760-2	642 (700-2)

NE-2, 14 MAY 2026 to 11 JUN 2026

NE-2, 14 MAY 2026 to 11 JUN 2026