

WAAS CH <b>77934</b> <b>W10A</b>	APP CRS <b>099°</b>	Rwy Ldg TDZE Apt Elev	<b>5013</b> <b>1043</b> <b>1044</b>
--	------------------------	-----------------------------	---

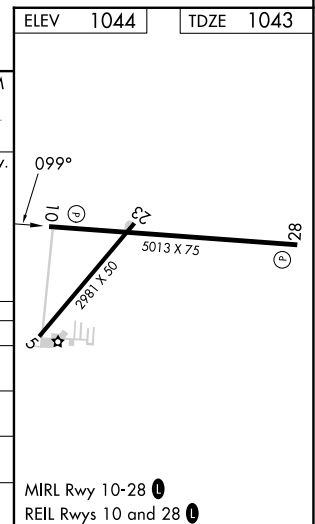
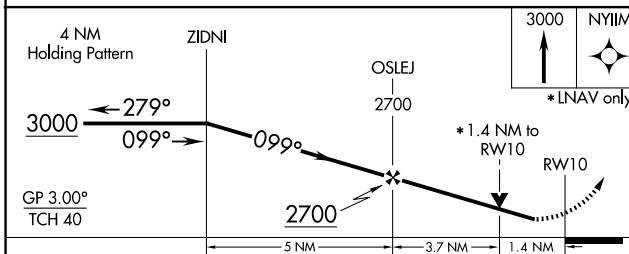
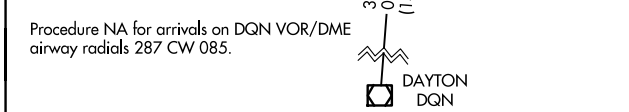
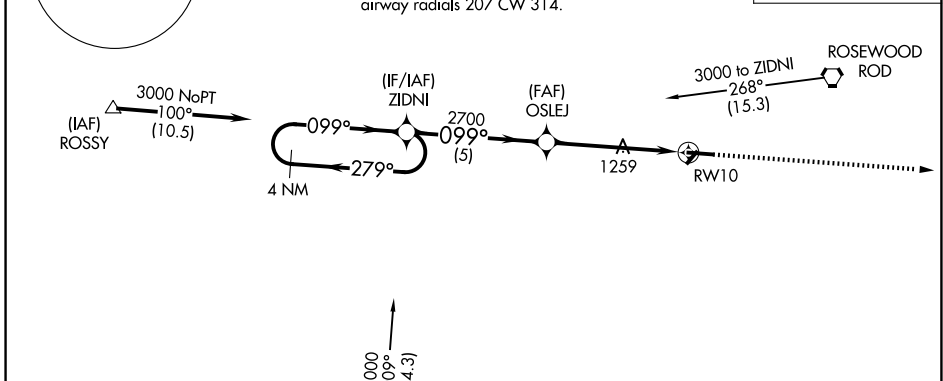
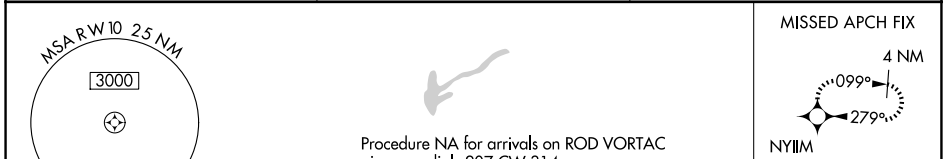
# RNAV (GPS) RWY 10

SIDNEY MUNI (SCA)

**⚠** For uncompensated Baro-VNAV systems, LNAV/VNAV NA below -22°C (-7°F) or above 54°C (130°F). DME/DME RNP-0.3 NA. Helicopter visibility reduction below ¼ SM NA. Baro-VNAV and VDP NA when using James M Cox Dayton Intl altimeter setting. Night Landing: Rwy 28 operational VGSIs required, remain on or above VGSIs glidepath until threshold. When local altimeter setting not received, use James M Cox Dayton Intl altimeter setting and increase all DA 53 feet and all MDA 60 feet; increase LPV all Cats and LNAV Cats C/D visibility ⅛ mile and Circling Cat C visibility ¼ mile.

**⚠** MISSED APPROACH: Climb to 3000 direct NYIIM and hold.

AWOS-3 <b>120.425</b>	COLUMBUS APP CON <b>134.45 294.5</b>	UNICOM <b>123.05 (CTAF)</b>
--------------------------	---	--------------------------------



CATEGORY	A	B	C	D
LPV DA		1308-1	265 (300-1)	
LNAV/VNAV DA		1293-1	250 (300-1)	
LNAV MDA	1520-1	477 (500-1)	1520-1⅓	477 (500-1⅓)
CIRCLING	1520-1	476 (500-1)	1640-1½ 596 (600-1½)	1640-2 596 (600-2)

EC-2, 14 MAY 2026 to 11 JUN 2026

EC-2, 14 MAY 2026 to 11 JUN 2026