

|  |                        |                             |   |
|--|------------------------|-----------------------------|---|
| WAAS<br>CH <b>82234</b><br><b>W28A</b> | APP CRS<br><b>279°</b> | Rwy Ldg<br>TDZE<br>Apt Elev | <b>5013</b><br><b>1044</b><br><b>1044</b> |
|--|------------------------|-----------------------------|---|

# RNAV (GPS) RWY 28

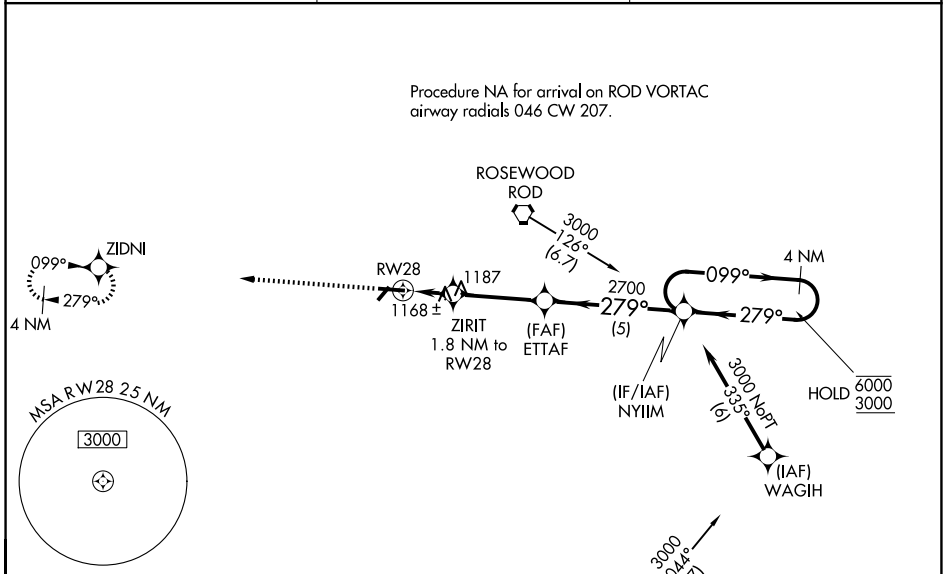
SIDNEY MUNI (SCA)

RNP APCH.

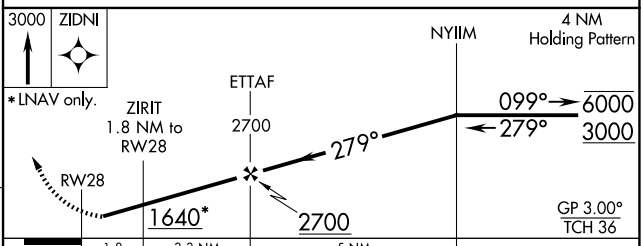
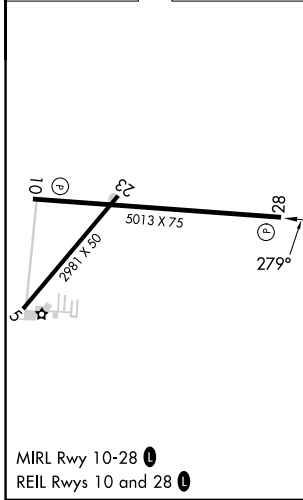
▼ Rwy 28 helicopter visibility reduction below 1 SM NA. Baro-VNAV NA when using James M. Cox Dayton Intl altimeter setting. For uncompensated Baro-VNAV systems, LNAV/VNAV NA below -22°C or above 54°C. When local altimeter setting not received, use James M. Cox Dayton Intl altimeter setting: increase LPV DA to 1355; increase LNAV/VNAV DA to 1365; increase all MDA 60 feet and LNAV Cat C visibility and Circling Cat C visibility ¼ SM. Straight-in hold. Rwy 28 at night, operational VGSI required, remain at or above VGSI glidepath until threshold.

MISSED APPROACH:  
Climb to 3000  
direct ZIDNI and hold.

|                          |   |                                |
|--------------------------|---|--------------------------------|
| AWOS-3<br><b>120.425</b> | COLUMBUS APP CON<br><b>134.45 294.5</b> | UNICOM<br><b>123.05 (CTAF)</b> |
|--------------------------|---|--------------------------------|



|           |           |
|-----------|-----------|
| ELEV 1044 | TDZE 1044 |
|-----------|-----------|



| CATEGORY     | A                     | B                     | C                       | D  |
|--------------|-----------------------|-----------------------|-------------------------|----|
| LPV DA       | 1302-1 258 (300-1)    |                       |                         | NA |
| LNAV/VNAV DA | 1312-1 268 (300-1)    |                       |                         | NA |
| LNAV MDA     | 1420-1 376 (400-1)    |                       |                         | NA |
| CIRCLING     | 1460-1<br>416 (500-1) | 1520-1<br>476 (500-1) | 1640-1½<br>596 (600-1½) | NA |

EC-2, 14 MAY 2026 to 11 JUN 2026

EC-2, 14 MAY 2026 to 11 JUN 2026