

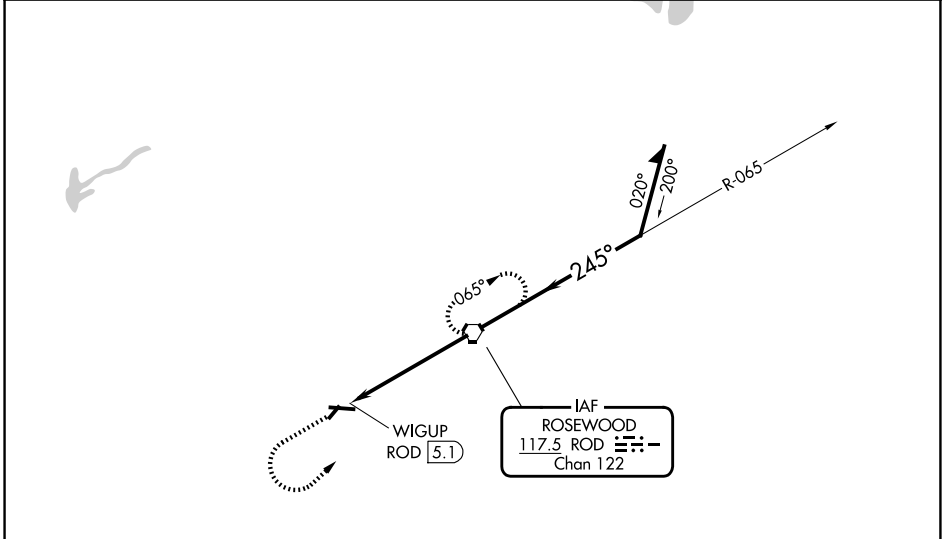
VORTAC ROD 117.5 Chan 122	APP CRS 245°	Rwy Ldg TDZE Apt Elev	N/A N/A 1044
---	------------------------	-----------------------------	---

VOR-A
SIDNEY MUNI (SCA)

NA When local altimeter setting not received, use James M Cox Dayton Intl altimeter setting and increase all MDAs 60 feet and increase Cat C visibility ¼ mile. Night Landing: Rwy 28 operational VGSI required, remain on or above VGSI glidepath until threshold. Helicopter visibility reduction below 1 SM NA.

MISSED APPROACH: Climb to 3000 then left turn direct ROD VORTAC and hold.

AWOS-3 120.425	COLUMBUS APP CON 134.45 294.5	UNICOM 123.05 (CTAF)
--------------------------	---	--------------------------------



NoPT for arrivals on ROD VORTAC airway radials 314 CW 088.

ELEV	1044
MIRL Rwy 10-28	
REIL Rws 10 and 28	
FAF to MAP 5.1 NM	
Knots	60 90 120 150 180
Min:Sec	5:06 3:24 2:33 2:02 1:42

3000	ROD	ROD VORTAC		
		Remain within 10 NM		
CATEGORY	A	B	C	D
CIRCLING	1540-1	496 (500-1)	1640-1½ 596 (600-1½)	1640-2 596 (600-2)

EC-2, 14 MAY 2026 to 11 JUN 2026

EC-2, 14 MAY 2026 to 11 JUN 2026