

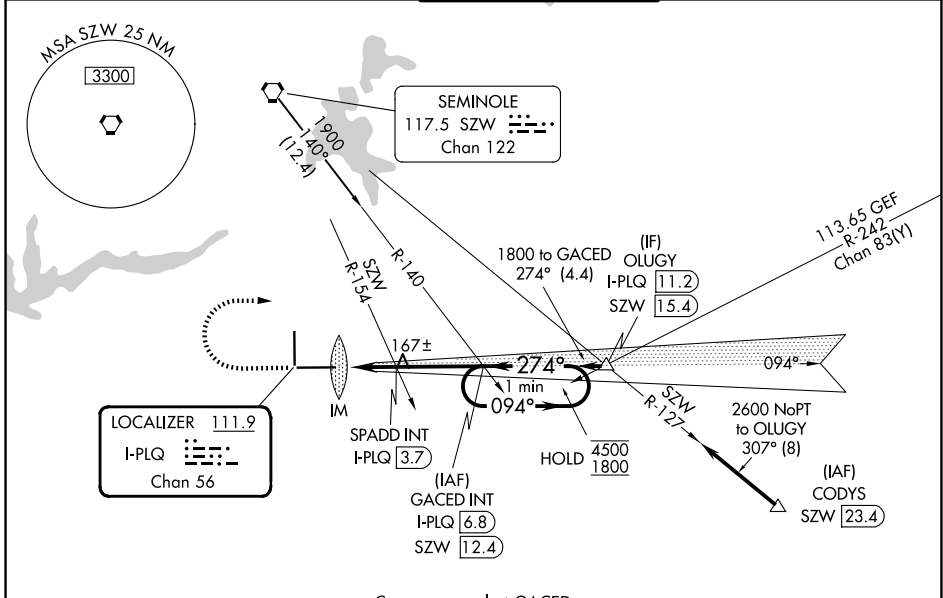
LOC/DME I-PLQ 111.9 Chan 56	APP CRS 274°	Rwy Ldg TDZE Apt Elev	8000 58 83
---	------------------------	-----------------------------	---------------------------------------

ILS or LOC RWY 27

TALLAHASSEE INTL (TLH)

DME required.	ALSIF-2	MISSED APPROACH: Climb to 2000 then climbing right turn to 4000 on heading 092° and on SZW VORTAC R-140 to GACED INT/SZW 12.4 DME and hold, continue climb-in-hold to 4000.
<p>▲ For inop ALS, increase S-ILS 27 Cat E visibility to RVR 4000 and S-LOC 27 Cat E visibility to 2 SM.</p> <p>ASR</p>		

ATIS 119.45 239.25	TALLAHASSEE APP CON * 135.8 317.4	TALLAHASSEE TOWER * 118.7 (CTAF) 257.8	GND CON 121.9 348.6	UNICOM 123.075
------------------------------	---	--	-------------------------------	--------------------------



Course reversal at GACED
NA for Cat E aircraft.

Procedure NA for arrivals at CODYS on V7-295 southeast bound.

ELEV 83	TDZE 58
---------	---------

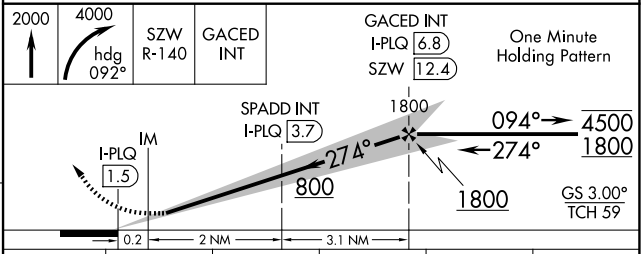
TWR

TWR

81
150
7000 X 150
36

0.3% UP
8000 X 150

0.4% UP



TDZ/CL Rwy 27
REIL Rws 9 and 18
HIRL Rws 9-27 and 18-36

FAF to MAP 5.3 NM

Knots	60	90	120	150	180
Min:Sec	5:18	3:32	2:39	2:07	1:46

CATEGORY	A	B	C	D	E
S-ILS 27	258/18 200 (200-½)				
S-LOC 27	740/24	682 (700-½)	740-1½	682 (700-1½)	
CIRCLING	740-1	657 (700-1)	740-2 657 (700-2)	800-2¼ 717 (800-2¼)	1000-3 917 (1000-3)

SE-3, 14 MAY 2026 to 11 JUN 2026

SE-3, 14 MAY 2026 to 11 JUN 2026