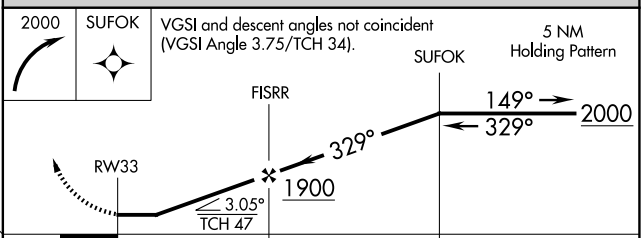
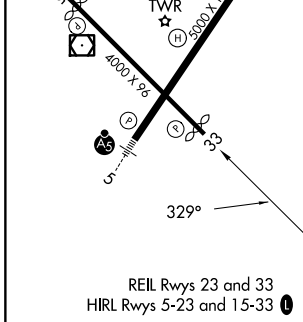
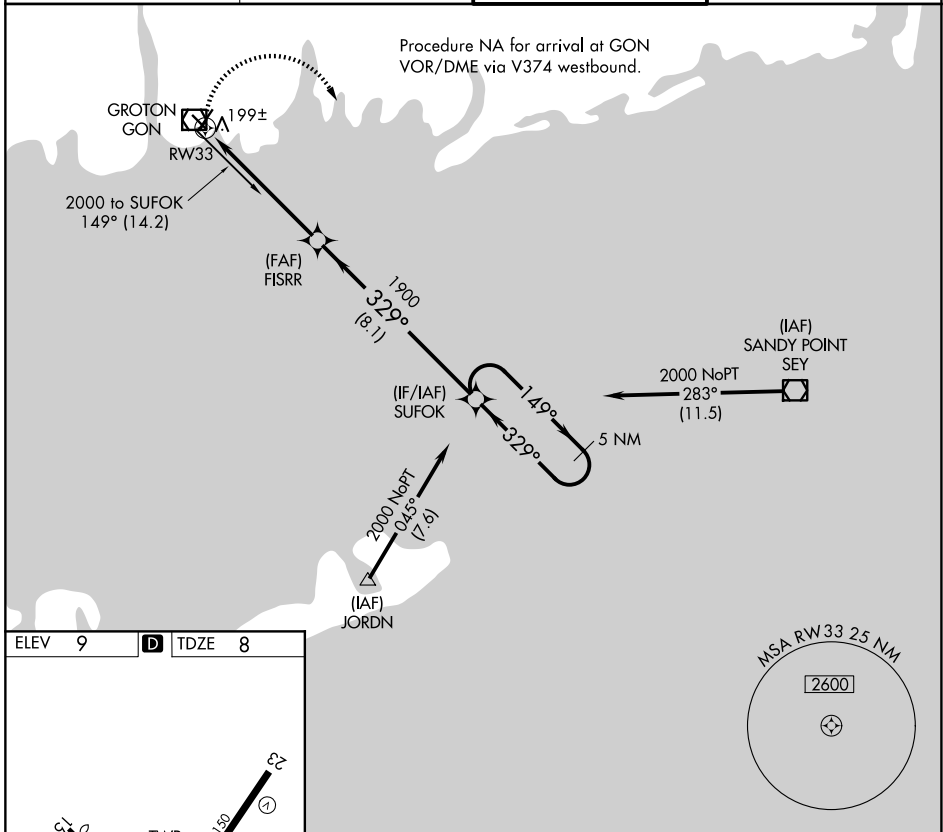


APP CRS	Rwy Ldg	3666
329°	TDZE	8
	Apt Elev	9

RNAV (GPS) RWY 33

GROTON-NEW LONDON (GON)

RNP APCH.		MISSED APPROACH: Climbing right turn to 2000 direct SUFOK and hold.	
Rwy 33 helicopter visibility reduction below 3/4 SM NA.			
ATIS	PROVIDENCE APP CON *	GROTON TOWER *	GND CON
127.0	125.75 319.2	125.6 (CTAF) 236.775	121.65 236.775



CATEGORY	A	B	C	D
LNAV MDA	460-1	452 (500-1)	460-1 1/4 452 (500-1 1/4)	460-1 1/2 452 (500-1 1/2)

NE-1, 14 MAY 2026 to 11 JUN 2026

NE-1, 14 MAY 2026 to 11 JUN 2026