

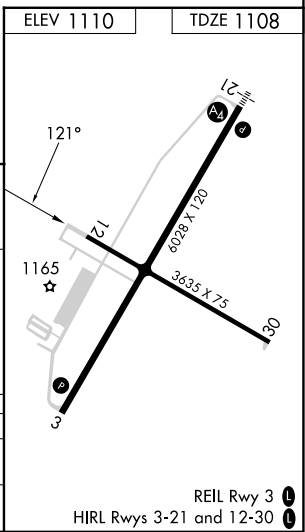
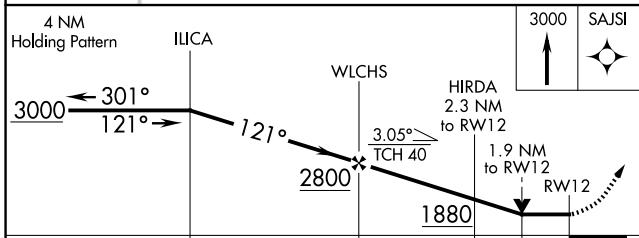
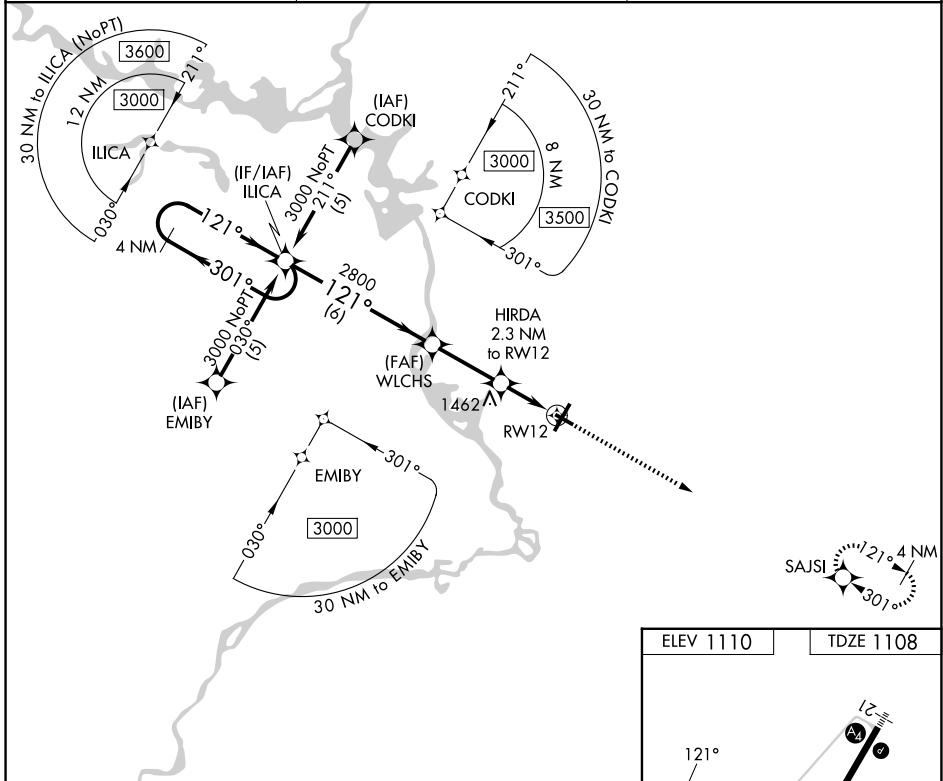
APP CRS	Rwy Ldg	<b>3635</b>
<b>121°</b>	TDZE	<b>1108</b>
	Apt Elev	<b>1110</b>

# RNAV (GPS) RWY 12

STEVENS POINT MUNI (STE)

RNP APCH - GPS.		MISSED APPROACH: Climb to 3000 direct SAJSI and hold.
<p><b>▼</b> Rwy 12 helicopter visibility reduction below <math>\frac{3}{4}</math> SM NA. When local altimeter not received, use Mosinee altimeter setting and increase all MDA 60 feet, increase LNAV Cat C and D visibility <math>\frac{1}{8}</math> SM. VDP NA when using Mosinee altimeter setting.</p>		

AWOS-3 <b>119.275</b>	MINNEAPOLIS CENTER <b>124.4 317.7</b>	UNICOM <b>122.7 (CTAF) 0</b>
--------------------------	--	---------------------------------



CATEGORY	A	B	C	D
LNVA MDA	1760-1	652 (700-1)	1760- $\frac{1}{8}$	652 (700- $\frac{1}{8}$ )
CIRCLING	1760-1	650 (700-1)	1860- $2\frac{1}{4}$ 750 (800- $2\frac{1}{4}$ )	1860- $2\frac{1}{2}$ 750 (800- $2\frac{1}{2}$ )

EC-3, 14 MAY 2026 to 11 JUN 2026

EC-3, 14 MAY 2026 to 11 JUN 2026