

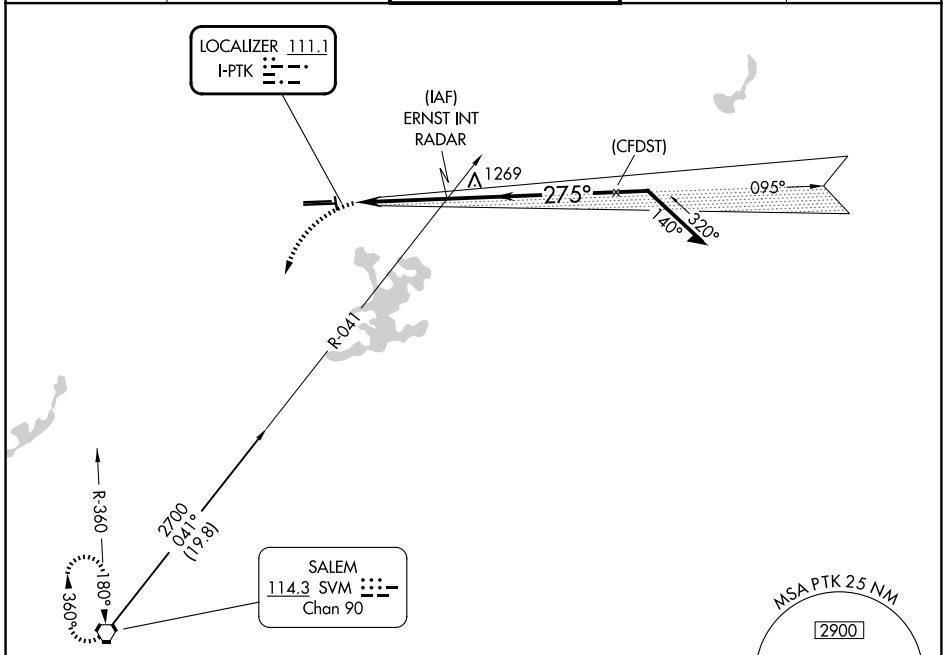
LOC I-PTK <b>111.1</b>	APP CRS <b>275°</b>	Rwy Ldg <b>6520</b>
		TDZE <b>974</b>
		Apt Elev <b>981</b>

**LOC BC RWY 27L**  
OAKLAND COUNTY INTL (PTK)

**⚠** Circling Rwy 9L, 36 NA at night. When local altimeter setting not received, use DET altimeter setting and increase all MDAs 120 feet, increase S-LOC BC 27L visibility Cats C and D 3/8 SM, and Circling visibility Cats C and D 1/2 SM.

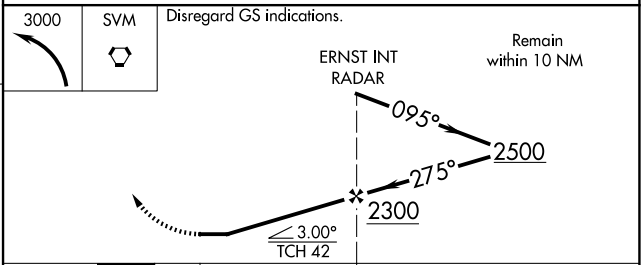
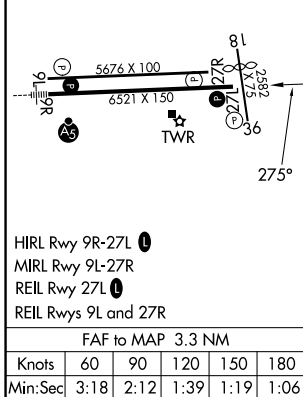
**MISSED APPROACH:**  
Climbing left turn to 3000 direct SVM VORTAC and hold.

ATIS <b>125.025</b>	DETROIT APP CON <b>132.35 284.0</b>	PONTIAC TOWER ★ <b>120.5</b> (CTAF) <b>0</b>	GND CON <b>121.9</b>	UNICOM <b>122.95</b>
------------------------	--	---	-------------------------	-------------------------



ELEV 981	<b>D</b>	TDZE 974
----------	----------	----------

**BACK COURSE**



CATEGORY	A	B	C	D
S-LOC 27L	1 440-1	466 (500-1)	1 440-1 <sup>3</sup> / <sub>4</sub>	466 (500-1 <sup>3</sup> / <sub>4</sub> )
CIRCLING	1 500-1 519 (600-1)	1 540-1 559 (600-1)	1 640-1 <sup>3</sup> / <sub>4</sub> 659 (700-1 <sup>3</sup> / <sub>4</sub> )	1 640-2 659 (700-2)