

RADAR required. DME required.

TOP ALTITUDE:  
3000

(METRO4.DXO) 24249  
METRO FOUR DEPARTURE

AL-5052 (FAA)

OAKLAND COUNTY INTL (PTK)  
PONTIAC, MICHIGAN

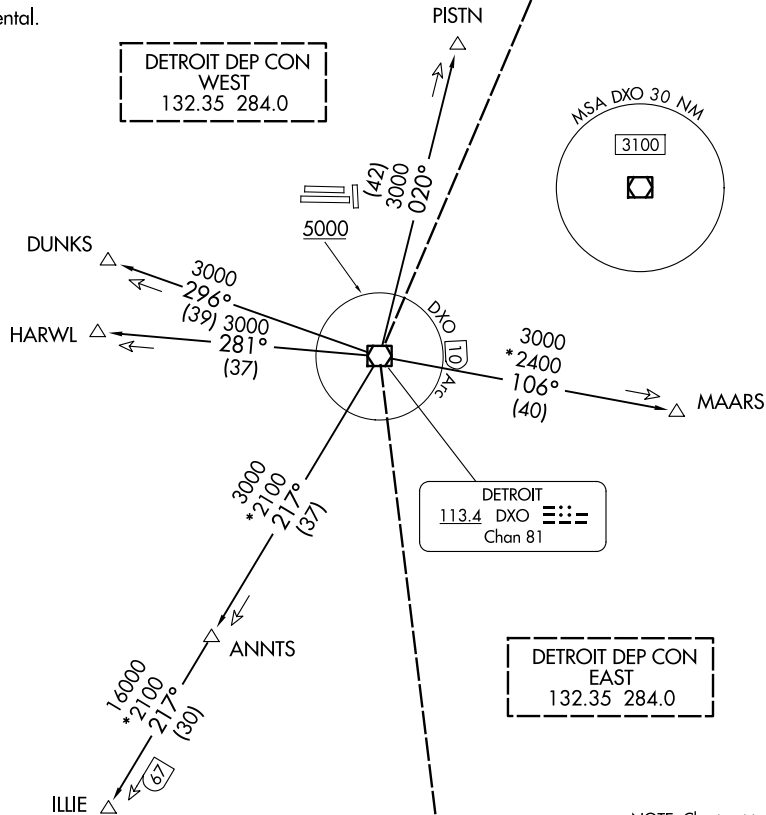
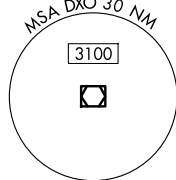
ATIS 125.025  
CLNC DEL 118.25  
GND CON 121.9  
PONTIAC TOWER ★  
120.5 (CTAF)

TAKEOFF MINIMUMS

Rwys 18, 36: NA - Environmental.

Rwys 9L/R, 27L/R: Standard.

DETROIT DEP CON  
WEST  
132.35 284.0



DETROIT  
113.4 DXO Chan 81

DETROIT DEP CON  
EAST  
132.35 284.0

NOTE: Chart not to scale.

METRO FOUR DEPARTURE  
(METRO4.DXO) 05SEP24

PONTIAC, MICHIGAN  
OAKLAND COUNTY INTL (PTK)

(CONTINUED ON FOLLOWING PAGE)



DEPARTURE ROUTE DESCRIPTION

TAKEOFF RUNWAYS 9L/R and 27L/R: Climb on assigned heading. Maintain ATC assigned altitude for RADAR vectors to intercept filed/assigned transition or enroute fix/navaid. When ATC assigned altitude is at or above 5000, cross DXO 10 DME Arc at or above 5000 for noise abatement. If unable to comply, advise ATC prior to departure. Expect clearance to filed altitude/flight level within ten (10) minutes after departure.

DUNKS TRANSITION (METRO4.DUNKS): From over DXO VOR/DME on DXO R-296 to DUNKS.

HARWL TRANSITION (METRO4.HARWL): From over DXO VOR/DME on DXO R-281 to HARWL.

ILLIE TRANSITION (METRO4.ILLIE): From over DXO VOR/DME on DXO R-217 to ILLIE.

MAARS TRANSITION (METRO4.MAARS): From over DXO VOR/DME on DXO R-106 to MAARS.

PISTN TRANSITION (METRO4.PISTN): From over DXO VOR/DME on DXO R-020 to PISTN.

EC-1, 14 MAY 2026 to 11 JUN 2026

EC-1, 14 MAY 2026 to 11 JUN 2026