

(ZETTR4.ZETTR) 24137

# ZETTR FOUR DEPARTURE (RNAV)

AL-5052 (FAA)

OAKLAND COUNTY INTL (PTK)

PONTIAC, MICHIGAN

DETROIT DEP CON  
 132.35 284.0  
 ATIS  
 125.025  
 CLNC DEL  
 118.25  
 GND CON  
 121.9  
 PONTIAC TOWER ★  
 120.5 (CTAF)

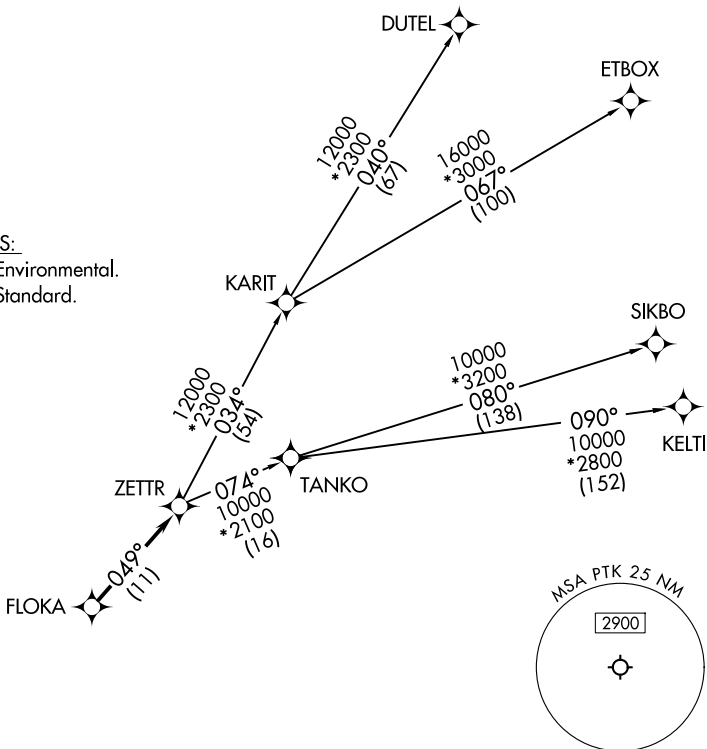
RNAV 1 - DME/DME/IRU or GPS.

RADAR required.

**TOP ALTITUDE:  
ASSIGNED BY ATC**

TAKEOFF MINIMUMS:

Rwy 18, 36: NA - Environmental.  
 Rwy 9L/R, 27L/R: Standard.



EC-1, 14 MAY 2026 to 11 JUN 2026

EC-1, 14 MAY 2026 to 11 JUN 2026



NOTE: Turbojet departures at/above 10000, maintain 280K until advised by ATC.  
 NOTE: TANKO Transition: For use by CYYZ area arrivals only, or as assigned by ATC.

NOTE: Chart not to scale.

### DEPARTURE ROUTE DESCRIPTION

**TAKEOFF RUNWAYS 9L/R:** Climb on heading 095° or as assigned by ATC, thence...  
**TAKEOFF RUNWAYS 27L/R:** Climb on heading 275° or as assigned by ATC, thence...

...for RADAR vectors to FLOKA, then on track 049° to ZETTR, then on (transition). Maintain ATC assigned altitude, expect filed altitude 10 minutes after departure.

- DUTEL TRANSITION (ZETTR4.DUTEL):
- ETBOX TRANSITION (ZETTR4.ETBOX):
- KELTI TRANSITION (ZETTR4.KELTI):
- SIKBO TRANSITION (ZETTR4.SIKBO):
- TANKO TRANSITION (ZETTR4.TANKO):

**ZETTR FOUR DEPARTURE (RNAV)**  
 (ZETTR4.ZETTR) 16MAY24

PONTIAC, MICHIGAN  
 OAKLAND COUNTY INTL (PTK)