

WAAS CH <b>90319</b> <b>W18A</b>	APP CRS <b>184°</b>	Rwy Ldg TDZE Apt Elev	<b>6558</b> <b>80</b> <b>90</b>
--	------------------------	-----------------------------	---------------------------------------

# RNAV (GPS) RWY 18

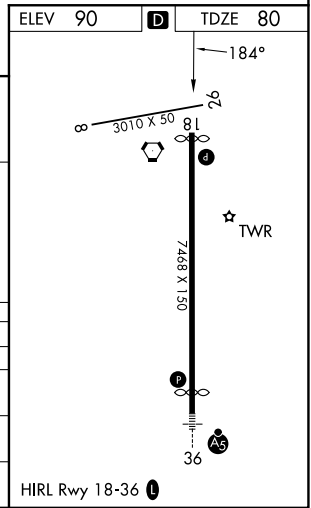
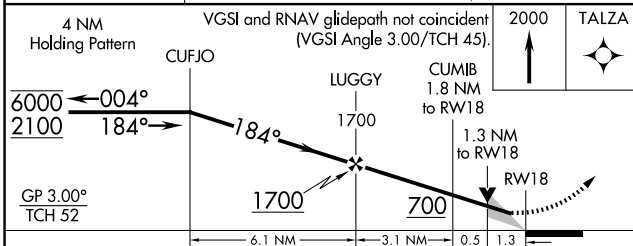
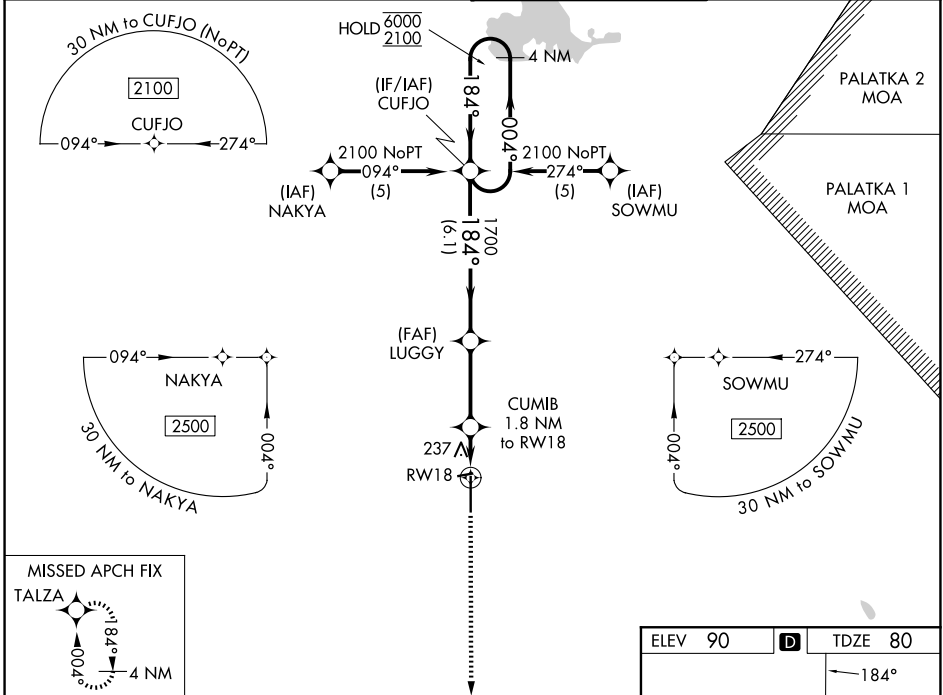
OCALA INTL-JIM TAYLOR FLD (OCF)

RNP APCH-GPS.

**⚠** For uncompensated Baro-VNAV systems, LNAV/VNAV NA below -5°C or above 54°C.  
**⚠** When local altimeter setting not received, use GNV altimeter setting and increase LPV DA to 361 feet and all visibilities ½ SM; increase LNAV/VNAV DA to 595 feet and all visibilities ½ SM, increase all MDA's 100 feet and LNAV visibility Cats C and D ¼ SM and Circling visibility Cats C and D ½ SM. Baro-VNAV and VDP NA when using GNV altimeter setting.

MISSED APPROACH:  
Climb to 2000 direct  
TALZA and hold.

ATIS <b>128.125</b>	JACKSONVILLE APP CON <b>118.6 251.15</b>	OCALA TOWER ★ <b>119.25 (CTAF) 0</b>	GND CON <b>121.4</b>
------------------------	---	---	-------------------------



CATEGORY	A	B	C	D
LPV DA		280-¾	200 (200-¾)	
LNAV/VNAV DA		514-1¼	434 (500-1¼)	
LNAV MDA	540-1	460 (500-1)	540-1¾	460 (500-1¾)
CIRCLING	600-1	510 (600-1)	760-1¾ 670 (700-1¾)	920-2¾ 830 (900-2¾)

SE-3, 14 MAY 2026 to 11 JUN 2026

SE-3, 14 MAY 2026 to 11 JUN 2026