

WAAS CH <b>58110</b> <b>W36A</b>	APP CRS <b>004°</b>	Rwy Ldg TDZE Apt Elev <b>6351</b> <b>80</b> <b>90</b>
--	------------------------	--

# RNAV (GPS) RWY 36

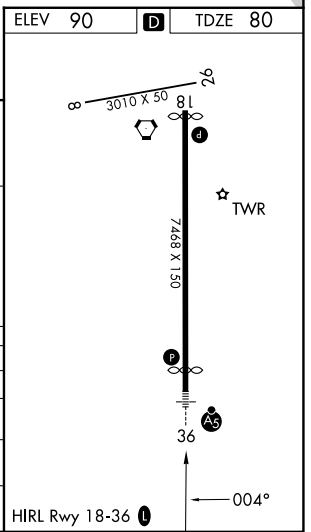
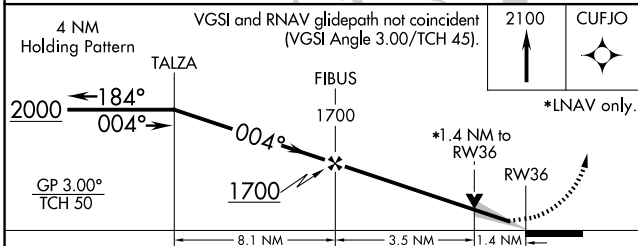
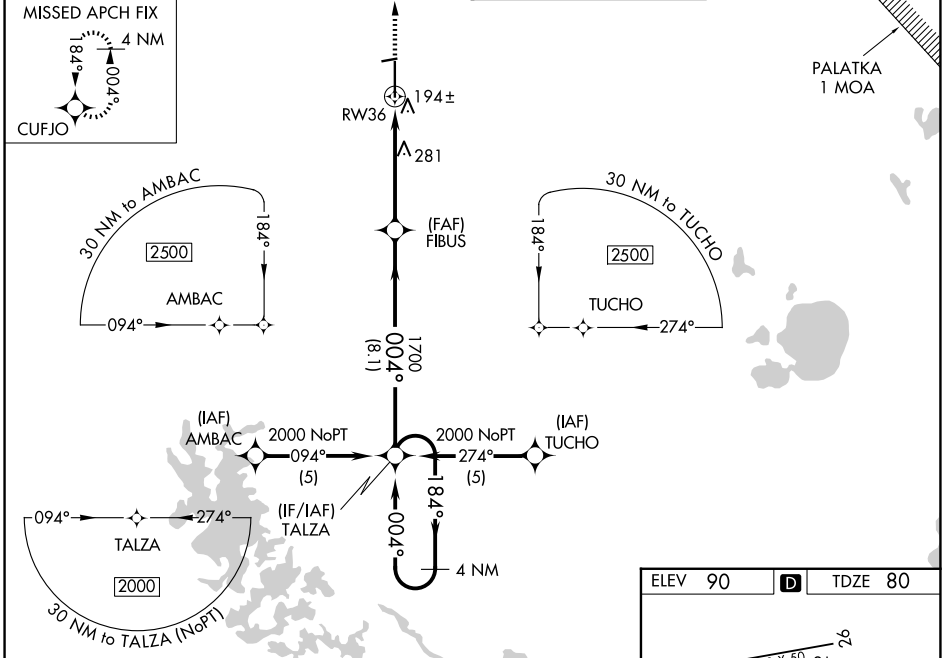
OCALA INTL-JIM TAYLOR FLD (OCF)

**⚠** For uncompensated Baro-VNAV systems, LNAV/VNAV NA below -15°C (5°F) or above 48°C (118°F). DME/DME RNP-0.3 NA. When local altimeter setting not received, use Gainesville altimeter setting; increase LPV DA to 361 feet, increase LNAV/VNAV DA to 644 feet and all MDAs 100 feet; increase LNAV/VNAV all Cats and LNAV visibility Cats C/D ¼ SM, increase Circling visibility Cat C ½ SM and Cat D ¼ SM. VDP and Baro-VNAV NA when using Gainesville altimeter setting. Inop table does not apply to LPV when using local altimeter setting. For inop MALSRS, increase LNAV Cats A and B visibility to 1 mile. For inop MALSRS when using Gainesville altimeter setting, increase LNAV Cats A and B visibility to 1 mile.

**MALSRS**

**MISSED APPROACH:**  
Climb to 2100 direct CUFJO and hold.

<b>ATIS</b> <b>128.125</b>	<b>JACKSONVILLE APP CON</b> <b>118.6 251.15</b>	<b>OCALA TOWER *</b> <b>119.25 (CTAF) 0</b>	<b>GND CON</b> <b>121.4</b>
-------------------------------	--	--	--------------------------------



CATEGORY	A	B	C	D
LPV DA	280-¾		200 (200-¾)	
LNAV/VNAV DA	563-1¼		483 (500-1¼)	
LNAV MDA	540-¾		460 (500-¾)	
CIRCLING	600-1		760-1¾	
	510 (600-1)		670 (700-1¾)	
			920-2¾	
			830 (900-2¾)	

SE-3, 14 MAY 2026 to 11 JUN 2026

SE-3, 14 MAY 2026 to 11 JUN 2026