


LOC/DME I-BMI <b>110.95</b> Chan <b>46 (Y)</b>	APP CRS <b>291°</b>	Rwy Ldg TDZE Apt Elev	<b>6525</b> <b>871</b> <b>871</b>
--	------------------------	-----------------------------	---

# ILS or LOC RWY 29

CENTRAL IL RGNL/BLOOMINGTON-NORMAL (BMI)

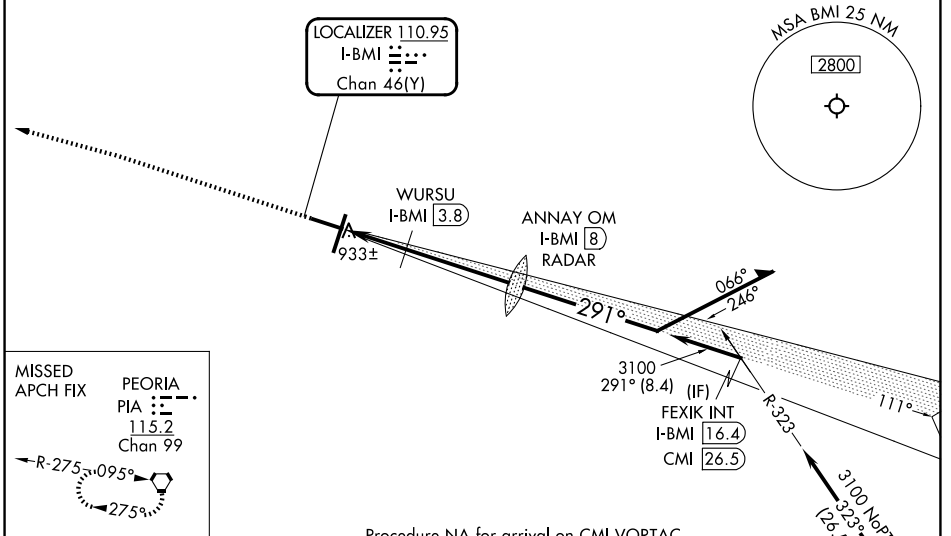
DME required. RADAR required for procedure entry at ANNAY OM.

**⚠** VDP NA when using PIA altimeter setting. For inop ALS, increase S-LOC 29 Cats C and D visibility to RVR 5500. When local altimeter setting not received, use PIA altimeter setting; increase S-ILS 29 DA to 1187 feet; increase all MDAs 120 feet and S-LOC 29 visibility Cats C and D to RVR 5000 and Circling visibility Cats C and D 1/2 SM. For inop ALS when using PIA altimeter setting: increase S-ILS 29 visibility all Cats to RVR 4500 and S-LOC 29 visibility Cats C and D to 1 3/8 SM. \* RVR 1800 authorized with use of FD or AP or HUD to DA (NA when using PIA altimeter setting).


MALSR 

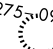
MISSED APPROACH: Climb to 1500 then climbing left turn to 3000 direct PIA VORTAC and hold.

ATIS <b>119.575</b>	SAINT LOUIS APP CON <b>128.725 256.9</b>	BLOOMINGTON TOWER * <b>124.6 (CTAF) 0 269.575</b>	GND CON <b>121.65</b>	UNICOM <b>122.95</b>
------------------------	---	--	--------------------------	-------------------------



MISSED APCH FIX

PEORIA  
PIA   
115.2  
Chan 99

R-275  095°  
275°




Procedure NA for arrival on CMI VORTAC  
airway radials 234 CW 006.

IAF  
CHAMPAIGN  
115.75 CMI   
Chan 104(Y)

ELEV 871 **D** TDZE 871

TDZ/CL Rwy 20 **1**  
HIRL Rws 2-20 and 11-29 **1**  
FAF to MAP 6.6 NM

Knots	60	90	120	150	180
Min:Sec	6:36	4:24	3:18	2:38	2:12

	1500	3000	PIA 	ANNAY OM I-BMI (8) RADAR	Remain within 10 NM
				WURSU I-BMI (3.8) I-BMI (2.4) I-BMI (1.4)	3019 1700 3100
				0.9 1.5 4.1 NM	111° 291° 3100
CATEGORY	A	B	C	D	GS 3.00° TCH 56
S-ILS 29 *	1071/24				200 (200-1/2)
S-LOC 29	1240/24	369 (400-1/2)	1240/35	369 (400-5/8)	
CIRCLING	1340-1	469 (500-1)	1620-2 1/4 749 (800-2/4)	1620-2 1/2 749 (800-2/2)	

EC-3, 14 MAY 2026 to 11 JUN 2026

EC-3, 14 MAY 2026 to 11 JUN 2026