

WAAS CH <b>56303</b> <b>W02A</b>	APP CRS <b>021°</b>	Rwy Ldg <b>8000</b> TDZE <b>867</b> Apt Elev <b>871</b>
--	------------------------	---

# RNAV (GPS) RWY 2

CENTRAL IL RGNL/BLOOMINGTON-NORMAL (BMI)

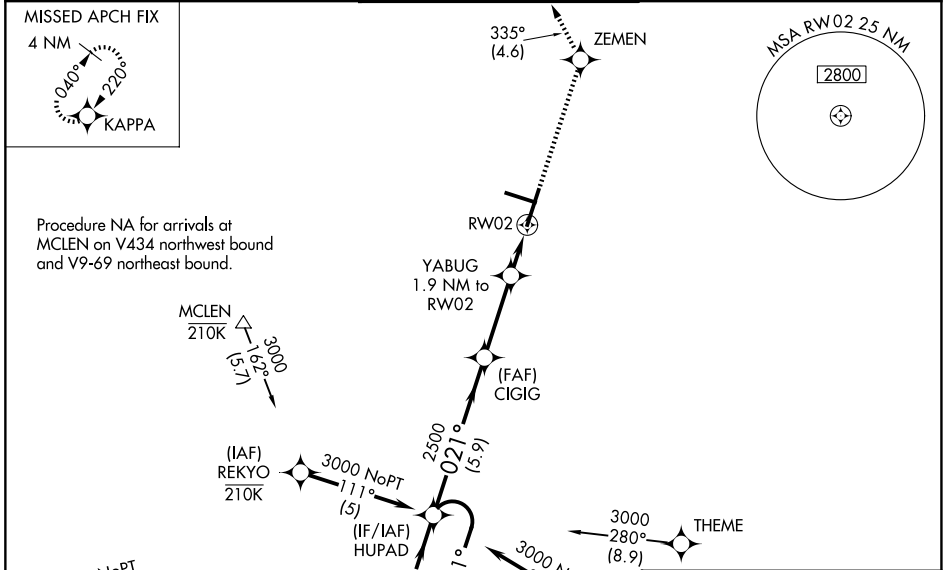
RNP APCH - GPS.

▼ For uncompensated Baro-VNAV systems, LNAV/VNAV NA below -21°C or above 54°C. Baro-VNAV and VDP NA when using PIA altimeter setting. Inop table does not apply to LPV. For inop ALS, increase LNAV/VNAV all Cats visibility to RVR 6000 and LNAV Cats C and D visibility to RVR 6000. When local altimeter setting not received, use PIA altimeter setting: increase LPV DA to 1183 feet; increase LNAV/VNAV DA to 1376 feet and all Cats visibility to RVR 5500; increase all MDAs 120 feet and Circling visibility Cats C and D ¼ SM. For inop ALS when using PIA altimeter setting; increase LNAV/VNAV all Cats visibility to 1 ½ SM and increase LNAV Cats C and D visibility to 1 ½ SM.

MALS R

MISSED APPROACH: Climb to 3000 direct ZEMEN and on track 335° to KAPPA and hold, continue climb-in-hold to 3000.

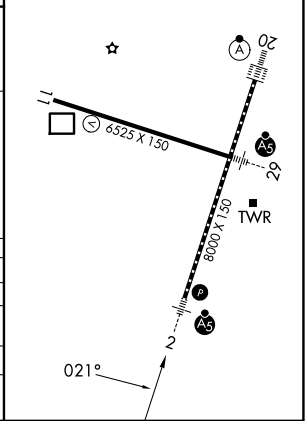
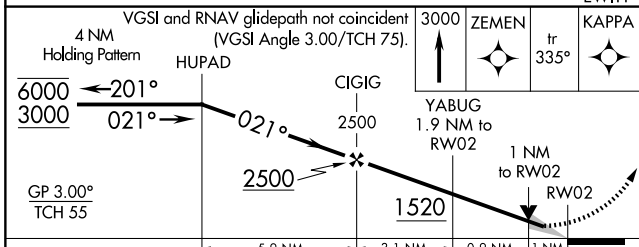
ATIS <b>119,575</b>	SAINT LOUIS APP CON <b>128,725 256.9</b>	BLOOMINGTON TOWER * <b>124.6 (CTAF) 269,575</b>	GND CON <b>121.65</b>	UNICOM <b>122.95</b>
------------------------	---	--	--------------------------	-------------------------



Procedure NA for arrivals at MCLEN on V434 northwest bound and V9-69 northeast bound.

Procedure NA for arrivals at EWITT on V233 northeast bound.

ELEV 871	<b>D</b>	TDZE 867
TDZ/CL Rwy 20		
HIRL Rwy 2-20 and 11-29		



CATEGORY	A	B	C	D
LPV DA		1067/40	200 (200-¾)	
LNAV/VNAV DA		1260/40	393 (400-¾)	
LNAV MDA		1260/40	393 (400-¾)	
CIRCLING	1340-1	469 (500-1)	1620-2¼ 749 (800-2¼)	1620-2½ 749 (800-2½)

# RNAV (GPS) RWY 2

EC-3, 14 MAY 2026 to 11 JUN 2026

EC-3, 14 MAY 2026 to 11 JUN 2026