

WAAS CH <b>99303</b> <b>W20A</b>	APP CRS <b>201°</b>	Rwy Ldg TDZE Apt Elev	<b>8000</b> <b>871</b> <b>871</b>
--	------------------------	-----------------------------	---

# RNAV (GPS) RWY 20

CENTRAL IL RGNL/BLOOMINGTON-NORMAL (BMI)

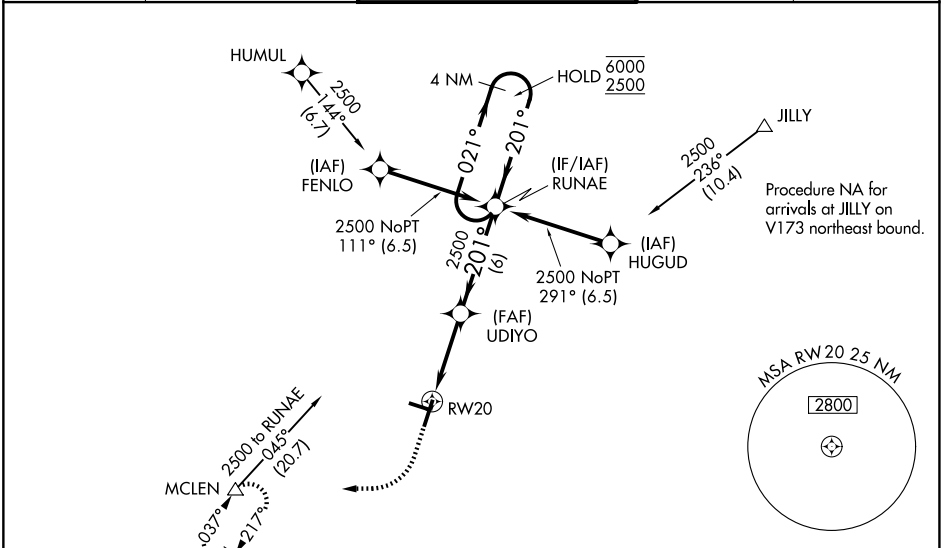
RNP APCH - GPS.

▼ For uncompensated Baro-VNAV systems, LNAV/VNAV NA below -20°C or above 54°C. Baro-VNAV and VDP NA when using PIA altimeter setting. When local altimeter setting not received, use PIA altimeter setting: increase LPV DA to 1187 feet and all visibilities to RVR 2400; increase LNAV/VNAV DA to 1417 feet and all visibilities to RVR 6000; increase all MDAs 120 feet and LNAV visibility Cat C and D to RVR 5500 and Circling visibility Cat C and D ¼ SM. For inop ALS, increase LNAV Cat C and D visibility to RVR 6000. For inop ALS when using PIA altimeter setting, increase LPV all Cats visibility to RVR 4500.

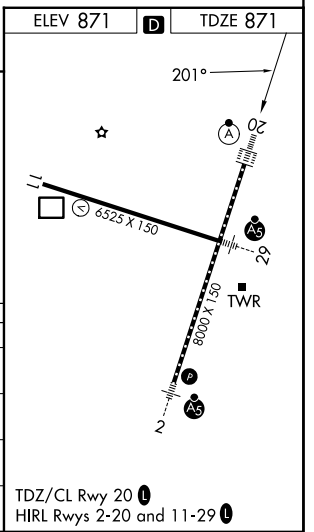
ALS F-2

MISSED APPROACH: Climb to 1500 then climbing right turn to 3000 direct MCLEN and hold.

ATIS <b>119,575</b>	SAINT LOUIS APP CON <b>128,725 256,9</b>	BLOOMINGTON TOWER ★ <b>124,6(CTAF) 269,575</b>	GND CON <b>121,65</b>	UNICOM <b>122,95</b>
------------------------	---	---	--------------------------	-------------------------



1500	3000	MCLEN				
			UDIYO	RUNAE	4 NM Holding Pattern	
			2500	201°	6000	2500
			1.1 NM to RW20	3.8 NM	6 NM	GP 3.00° TCH 58
CATEGORY	A	B	C	D		
LPV DA	1071/18		200 (200-½)			
LNAV/VNAV DA	1301/40		430 (500-¾)			
LNAV MDA	1280/24	409 (500-½)	1280/40	409 (500-¾)		
CIRCLING	1340-1	469 (500-1)	1620-2¼ 749 (800-2¼)	1620-2½ 749 (800-2½)		



# RNAV (GPS) RWY 20

EC-3, 14 MAY 2026 to 11 JUN 2026

EC-3, 14 MAY 2026 to 11 JUN 2026