

WAAS CH 60909 W29A	APP CRS 291°	Rwy Ldg TDZE Apt Elev	6525 871 871
--	------------------------	-----------------------------	---

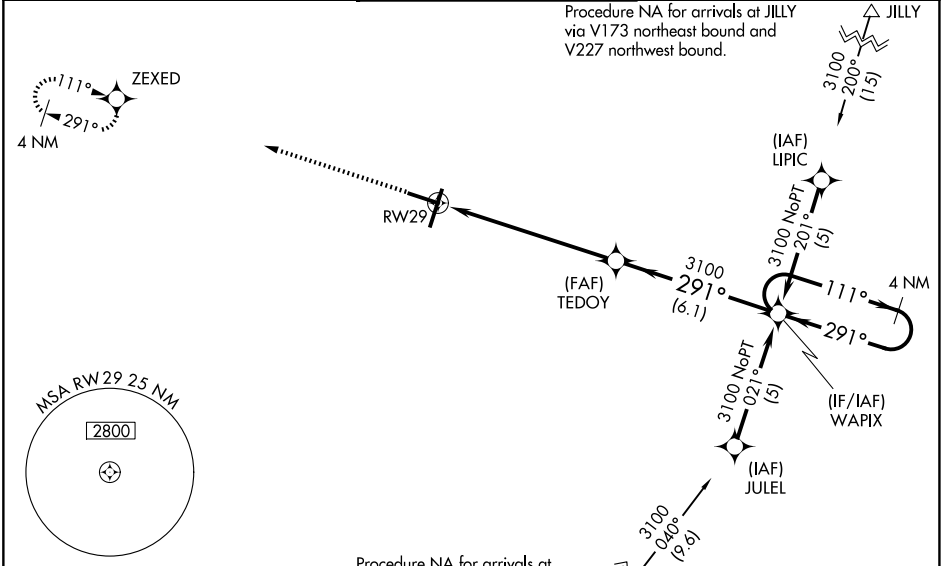
RNAV (GPS) RWY 29

CENTRAL IL RGNL/BLOOMINGTON-NORMAL (BMI)

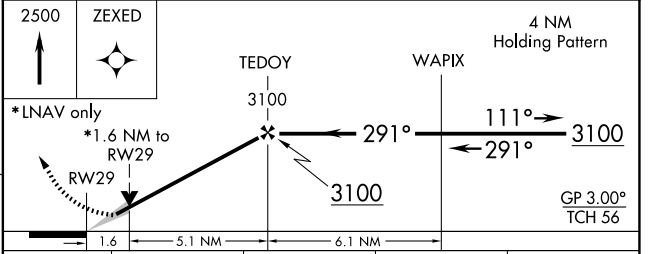
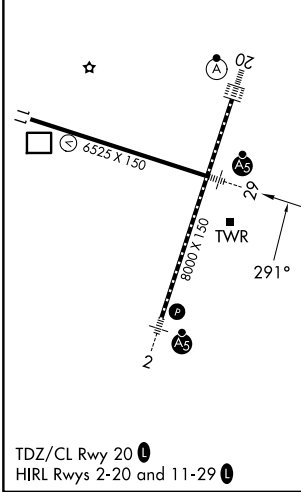
⚠ For uncompensated Baro-VNAV systems, LNAV/VNAV NA below -16°C (4°F) or above 54°C (130°F). DME/DME RNP-0.3 NA. Baro-VNAV and VDP NA when using General Downing-Peoria Intl altimeter setting. When local altimeter setting not received, use General Downing-Peoria Intl altimeter setting: increase all DA 116 feet and all MDA 120 feet; increase LPV all Cats visibility to RVR 3500, LNAV/VNAV all Cats and LNAV Cats C/D visibility 3/8 mile, and Circling Cats C/D visibility 1/4 mile. For inoperative MALSRs when using General Downing-Peoria Intl altimeter setting increase LPV all Cats visibility 1/2 mile, and LNAV Cat C/D visibility 3/8 mile.

MALSR 	MISSED APPROACH: Climb to 2500 direct ZEXED and hold.
-----------	--

ATIS 119.575	SAINT LOUIS APP CON 128.725 256.9	BLOOMINGTON TOWER * 124.6 (CTAF) 269.575	GND CON 121.65	UNICOM 122.95
------------------------	---	--	--------------------------	-------------------------



ELEV 871	D	TDZE 871
----------	----------	----------



CATEGORY	A	B	C	D
LPV DA		1121/24	250 (300-1/2)	
LNAV/VNAV DA		1304/50	433 (500-1)	
LNAV MDA	1460/24	589 (600-1/2)	1460-1 1/4	589 (600-1 1/4)
CIRCLING	1460-1	589 (600-1)	1620-2 1/4 749 (800-2 1/4)	1620-2 1/2 749 (800-2 1/2)

EC-3, 14 MAY 2026 to 11 JUN 2026

EC-3, 14 MAY 2026 to 11 JUN 2026