

VORTAC PXV <b>113.3</b> Chan <b>80</b>	APP CRS <b>150°</b>	Rwy Idg TDZE Apt Elev	<b>N/A</b> <b>N/A</b> <b>387</b>
--	------------------------	-----------------------------	--

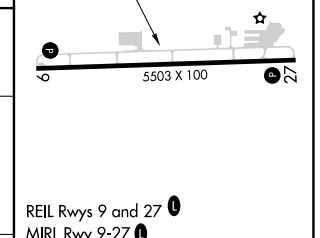
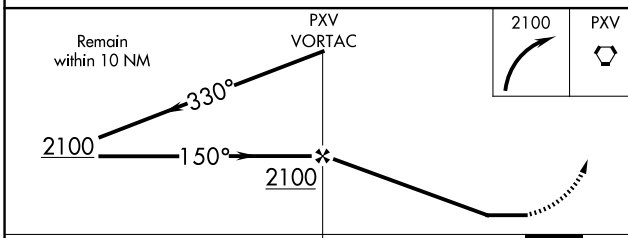
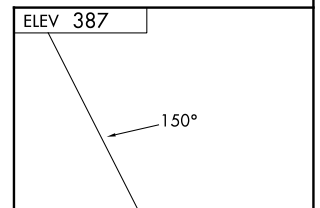
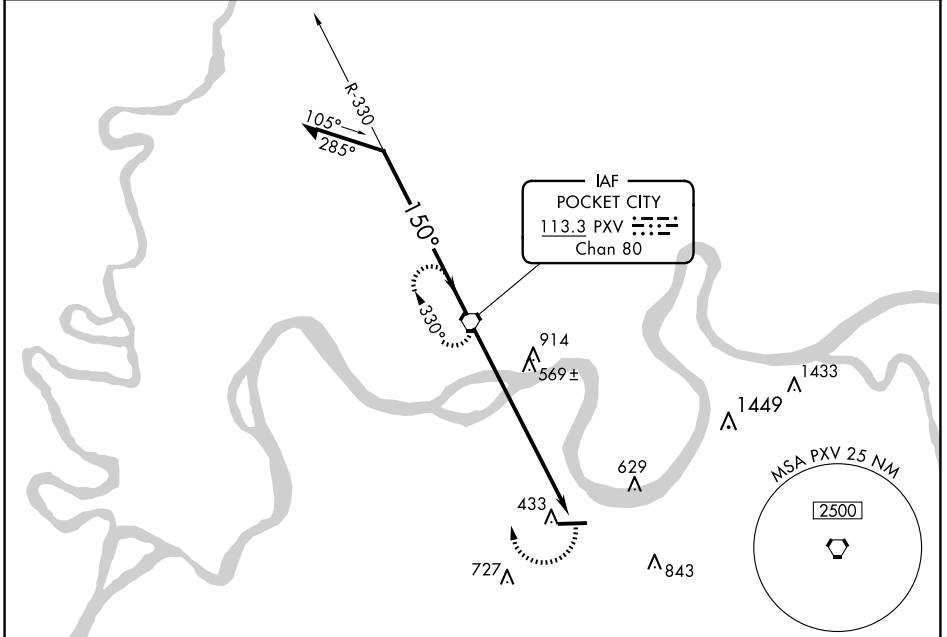
**VOR-A**

HENDERSON CITY-COUNTY (EHR)

**NA** When local altimeter setting not received, use Evansville altimeter setting and increase all MDAs 80 feet, and increase Circling Cats C/D visibility ¼ SM.

**MISSED APPROACH:** Climbing right turn to 2100 direct PXV VORTAC and hold.

AWOS-3PT <b>118.85</b>	EVANSVILLE APP CON ★ <b>124.025 257.8</b>	UNICOM <b>122.8</b> (CTAF) <b>0</b>
---------------------------	--	--



CATEGORY	A	B	C	D	FAF to MAP 7.9 NM					
CIRCLING	920-1 533 (600-1)		1040-1¾ 653 (700-1¾)	1200-2¾ 813 (900-2¾)	Knots	60	90	120	150	180
					Min:Seq	7:54	5:16	3:57	3:10	2:38

SE-1, 14 MAY 2026 to 11 JUN 2026

SE-1, 14 MAY 2026 to 11 JUN 2026