

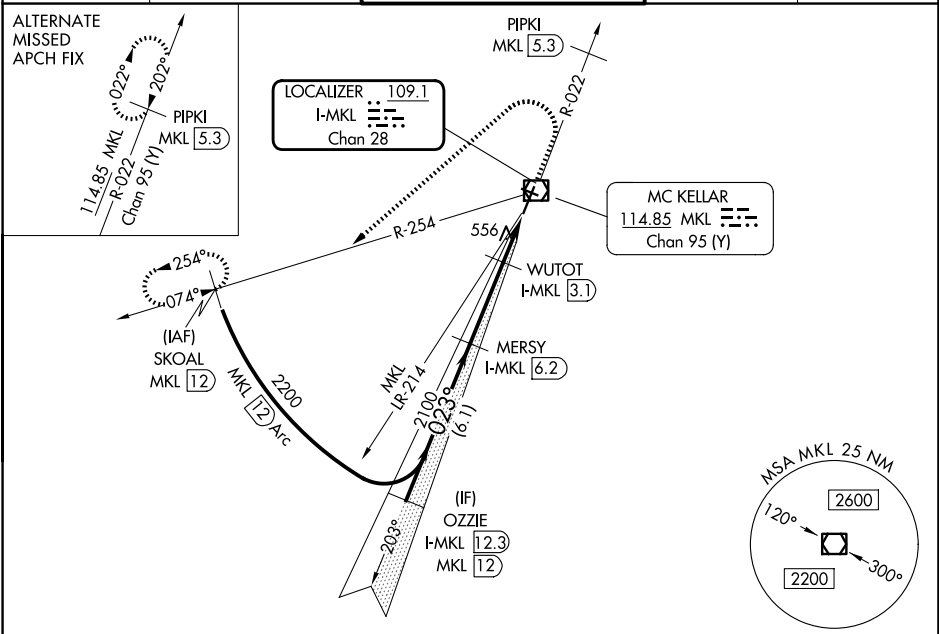
LOC/DME I-MKL <b>109.1</b> Chan <b>28</b>	APP CRS <b>023°</b>	Rwy Ldg TDZE <b>433</b> Apt Elev <b>433</b>
---	------------------------	---

# ILS or LOC RWY 2

JACKSON RGNL (MKL)

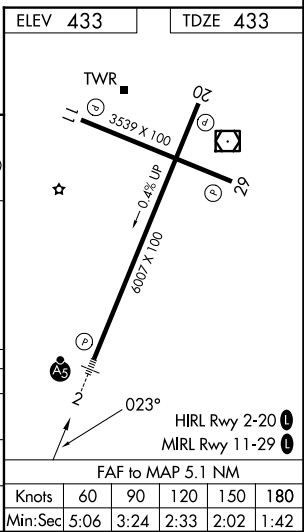
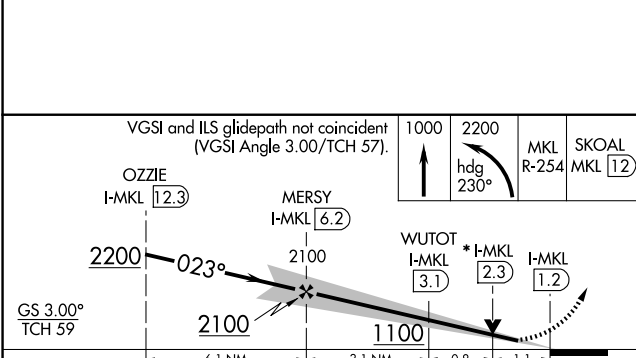
DME required. RADAR required for procedure entry.		MALS R	MISSED APPROACH: Climb to 1000 then climbing left turn to 2200 on heading 230° and MKL VOR/DME R-254 to SKOAL/MKL 12 DME and hold.
<p>▼ Rwy 2 helicopter visibility reduction below 3/4 SM NA. For inop ALS, increase S-LOC 2 Cat A/B visibility to 1 SM and Cat C/D visibility 1 1/2 SM.</p> <p>▲</p>			

ASOS <b>119.325</b>	MEMPHIS CENTER <b>134.65 316.15</b>	JACKSON TOWER ★ <b>127.15 (CTAF) 0 249.95</b>	GND CON <b>120.9</b>	UNICOM <b>122.95</b>
------------------------	--	--	-------------------------	-------------------------



SE-1, 14 MAY 2026 to 11 JUN 2026

SE-1, 14 MAY 2026 to 11 JUN 2026



CATEGORY	A	B	C	D
S-ILS 2		770-3/4	337 (400-3/4)	
S-LOC 2		820-3/4	387 (400-3/4)	
CIRCLING	900-1 467 (500-1)	920-1 487 (500-1)	960-1 1/2 527 (600-1 1/2)	1100-2 667 (700-2)

FAF to MAP 5.1 NM	Knots	60	90	120	150	180
	Min:Sec	5:06	3:24	2:33	2:02	1:42