


LOC I-HIO 110.7	APP CRS 128°	Rwy Ldg TDZE Apt Elev	6600 203 208
---------------------------	------------------------	-----------------------------	---

ILS or LOC RWY 13R

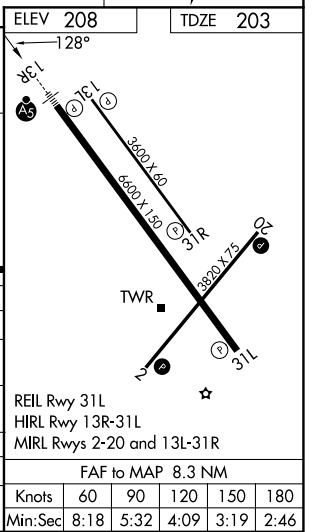
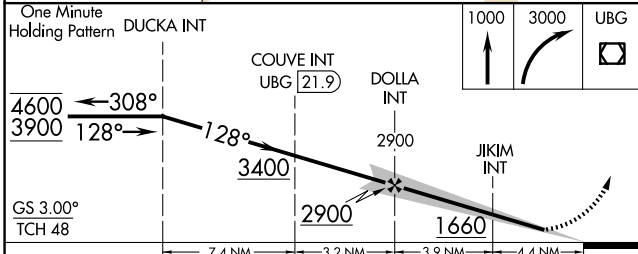
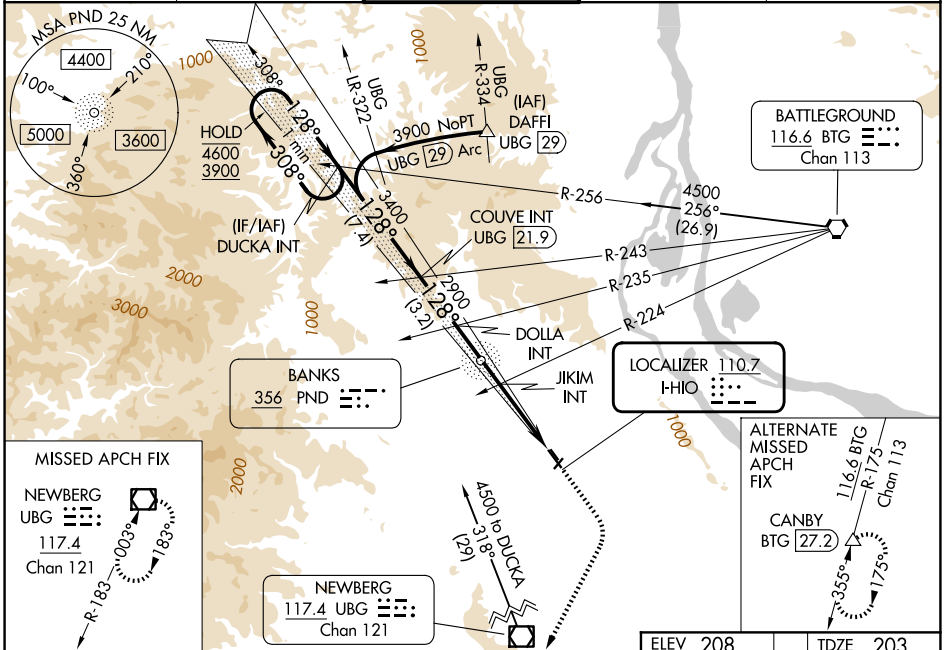
PORTLAND-HILLSBORO (HIO)

⚠ Circling to Rwy 13L, 31R NA at night. Inop table does not apply to S-LOC Rwy 13R all Cats. For inop ALS, increase JIKIM fix minimums Cat C/D visibility to 1 3/8 SM. * RVR 1800 authorized with use of FD or AP or HUD to DA.

MALSR 

MISSED APPROACH: Climb to 1000 then climbing right turn to 3000 direct UBG VOR/DME and hold.

ATIS 127.65	PORTLAND APP CON 126.0 269.175	HILLSBORO TOWER * 119.3 (CTAF) 239.3	GND CON 121.7	UNICOM 122.95
-----------------------	--	--	-------------------------	-------------------------



CATEGORY	A	B	C	D
S-ILS 13R*	403/24 200 (200-1/2)			
S-LOC 13R	1660/40 1457 (1500-3/4)	1660/55 1457 (1500-1)	1660-3	1457 (1500-3)
CIRCLING	1660-1 1/4 1452 (1500-1 1/4)	1660-1 1/2 1452 (1500-1 1/2)	1660-3	1452 (1500-3)
JIKIM FIX MINIMUMS (DUAL VOR RECEIVERS REQUIRED)				
S-LOC 13R	700/24	497 (500-1/2)	700/50	497 (500-1)
CIRCLING	700-1 492 (500-1)	720-1 512 (600-1)	940-2 732 (800-2)	980-2 1/2 772 (800-2 1/2)

NW-1, 14 MAY 2026 to 11 JUN 2026

NW-1, 14 MAY 2026 to 11 JUN 2026