

HI-TACAN X RWY 32L

TACAN NLC Chan 80	APCH CRS 322°	Rwy Idg TDZE Arprt Elev 13,501 227 228
-----------------------------	-------------------------	--

[USN]

LEMOORE NAS (REEVES FIELD) (KNLC)

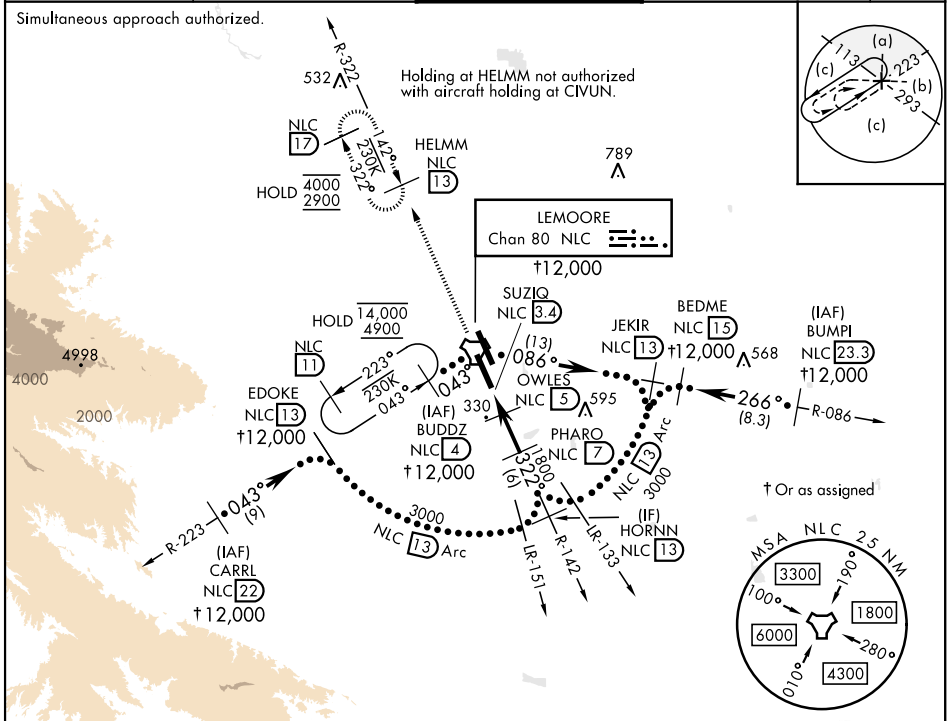
▲ * When ALS inop, increase CAT CDE vis to 1 mile.



MISSED APPROACH: Climb to 2900 via NLC TACAN R-142 to NLC, then via NLC R-322 to HELMM and hold.

ATIS★ 121.575 327.15	APP CON 124.1 269.025 (N) 118.15 269.025 (S)	TOWER★ 128.3 360.2	GND CON 121.65 305.2	ASR/ PAR
--------------------------------	--	------------------------------	--------------------------------	-------------

Simultaneous approach authorized.

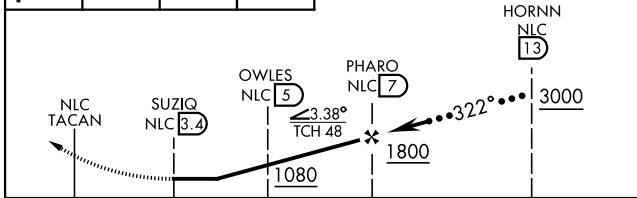


SW-2, 14 MAY 2026 to 11 JUN 2026

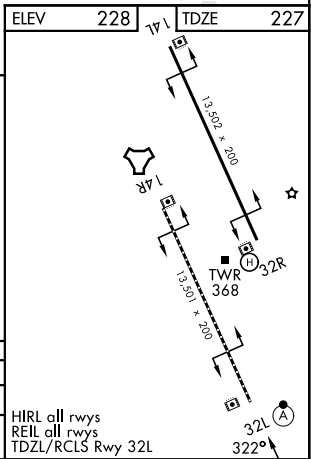
SW-2, 14 MAY 2026 to 11 JUN 2026

EMERG SAFE ALT 100 NM 16,700

2900 NLC R-142	NLC R-322	HELMM NLC 13
----------------------	--------------	--------------------



CATEGORY	C	D	E
S-32L *	580-5/8	353 (400-5/8)	
CIRCLING	680-1 1/2 452 (500-1 1/2)	780-2 552 (600-2)	800-2 572 (600-2)



HI-TACAN X RWY 32L