

RNAV (GPS) RWY 14L

WAAS Chan 70209 W14A	APCH CRS 142°	Rwy Idg 13,502 TDZE 219 Arprt Elev 228
--	-------------------------	---

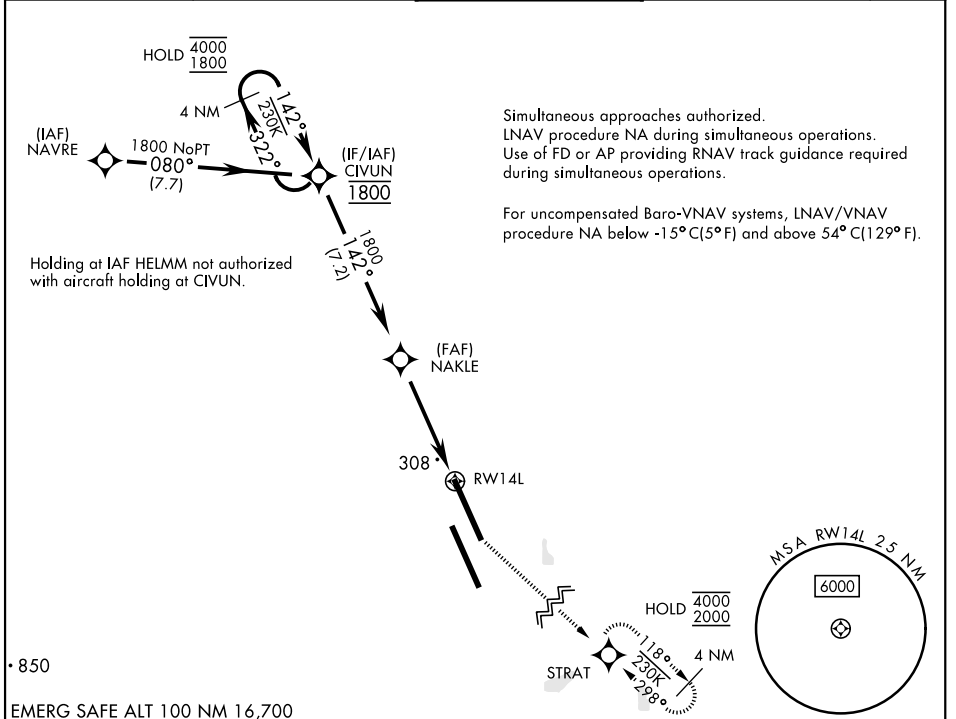
[USN]

LEMOORE NAS (REEVES FIELD) (KNLC)

RNP APCH - GPS

MISSED APPROACH: Climb to 1200, then climbing left turn to 2000 direct STRAT and hold.

ATIS★ 121.575 327.15	APP CON 124.1 269.025 (N) 118.15 269.025 (S)	TOWER★ 128.3 340.2	GND CON 121.65 305.2	ASR/ PAR
--------------------------------	--	------------------------------	--------------------------------	-------------



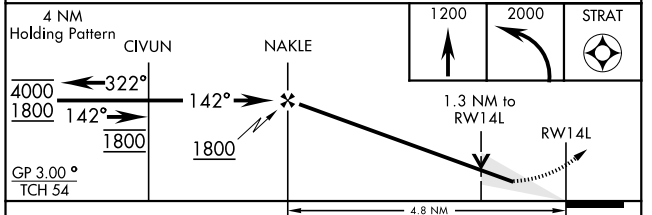
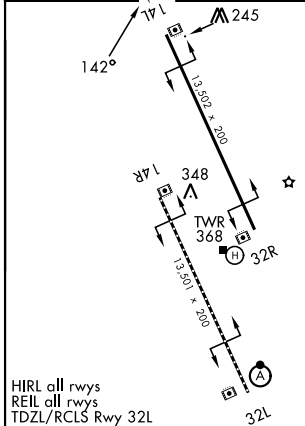
Simultaneous approaches authorized.
 LNAV procedure NA during simultaneous operations.
 Use of FD or AP providing RNAV track guidance required during simultaneous operations.

For uncompensated Baro-VNAV systems, LNAV/VNAV procedure NA below -15°C (5°F) and above 54°C (129°F).

Holding at IAF HELMM not authorized with aircraft holding at CIVUN.

EMERG SAFE ALT 100 NM 16,700

ELEV 228	TDZE 219
----------	----------



CATEGORY	A	B	C	D
LPV DA	419-3/4	200	(200-3/4)	
LNAV/VNAV DA	582-1	363	(400-1)	
LNAV MDA	680-1	461 (500-1)	680-1 3/8 461 (500-1 3/8)	780-2
CIRCLING	680-1	452 (500-1)	452 (500-1 1/2)	552 (600-2)

RNAV (GPS) RWY 14L

SW-2, 14 MAY 2026 to 11 JUN 2026

SW-2, 14 MAY 2026 to 11 JUN 2026