

RNAV (GPS) RWY 14R

WAAS Chan 75978 W14B	APCH CRS 142°	Rwy Idg 13,501 TDZE 228 Arprt Elev 228
--	-------------------------	---

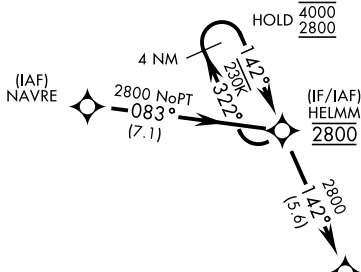
[USN]

LEMOORE NAS (REEVES FIELD) (KNLC)

RNP APCH - GPS

MISSED APPROACH: Climb to 2800 direct PHROG and hold.

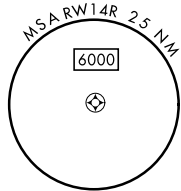
ATIS★ 121.575 327.15	APP CON 124.1 269.025 (N) 118.15 269.025 (S)	TOWER★ 128.3 360.2	GND CON 121.65 305.2	ASR/ PAR
--------------------------------	--	------------------------------	--------------------------------	-------------



Holding at IAF CIVUN not authorized with aircraft holding at HELMM.

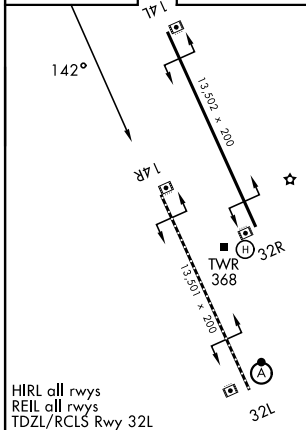
Simultaneous approaches authorized.
LNAV procedure NA during simultaneous operations.
Use of FD or AP providing RNAV track guidance required during simultaneous operations.

For uncompensated Baro-VNAV systems, LNAV/VNAV procedure NA below -15°C (5°F) and above 54°C (129°F).



EMERG SAFE ALT 100 NM 16,700

ELEV	228	TDZE	228
------	-----	------	-----



HIRL all rwws
REIL all rwws
TDZL/RCLS Rwy 32L

4 NM Holding Pattern	HELMM	MIKSE	PHROG	
4000 2800	322° 142°	142° 2800	2800 PHROG	
GP 3.00° TCH 51		1.6 NM to RWY 14R		
		7.9 NM		
CATEGORY	A	B	C	D
LPV DA		428-¾	200 (200-¾)	
LNAV/VNAV DA		594-1	366 (400-1)	
LNAV MDA	780-1	552 (600-1)	780-1½	552 (600-1½)
CIRCLING	780-1	552 (600-1)	780-1½	780-2 552 (600-2)

RNAV (GPS) RWY 14R

SW-2, 14 MAY 2026 to 11 JUN 2026

SW-2, 14 MAY 2026 to 11 JUN 2026