

# REEVES-FIVE DEPARTURE (REVES5.NLC)

LEMOORE NAS (REEVES FIELD) (KNLC)  
[USN] LEMOORE, CALIFORNIA

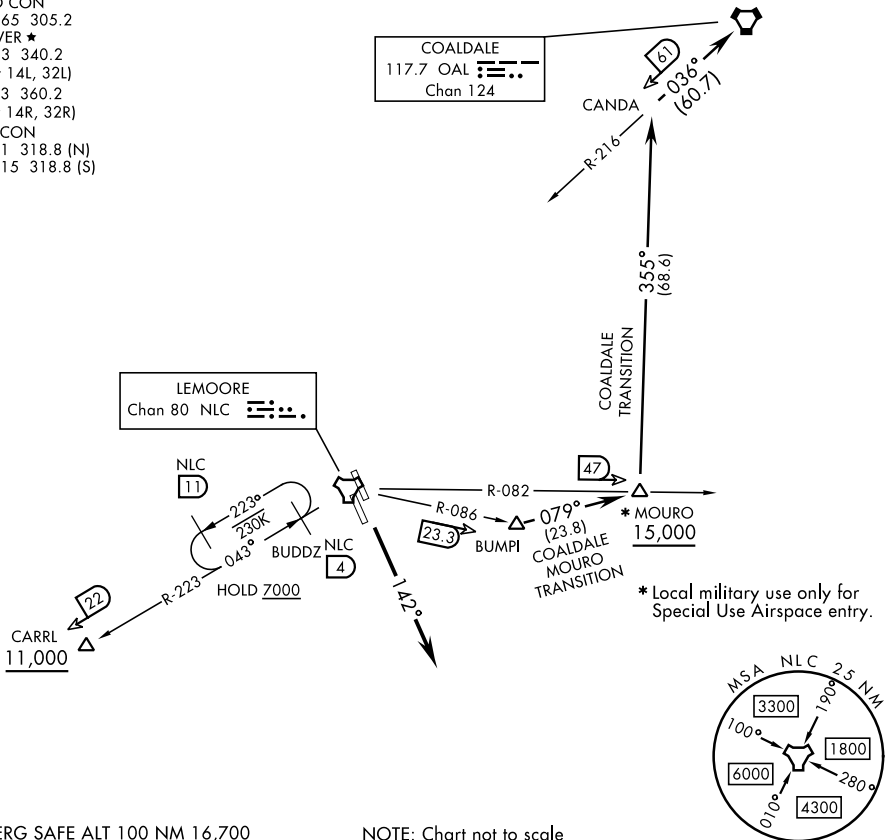
RADAR required

ATIS ★ 121.575 327.15  
 CLNC DEL  
 124.1 371.9  
 GND CON  
 121.65 305.2  
 TOWER ★  
 128.3 340.2  
 (Rwy 14L, 32L)  
 128.3 360.2  
 (Rwy 14R, 32R)  
 DEP CON  
 124.1 318.8 (N)  
 118.15 318.8 (S)

**TOP ALTITUDE:  
Assigned by ATC**

COALDALE  
 117.7 OAL  
 Chan 124

LEMOORE  
 Chan 80 NLC



EMERG SAFE ALT 100 NM 16,700

NOTE: Chart not to scale

**DEPARTURE ROUTE DESCRIPTION**

**TAKEOFF RUNWAY 14L/14R:** Climb to 2000 via hdg 142° then radar vectors to join assigned transition or route.

**CARRL TRANSITION (REVES5.CARRL):** From CARRL thence as filed. Cross CARRL at or above 11,000.

**COALDALE TRANSITION (REVES5.OAL):** From BUMPI direct MOURO, direct CANDDA, direct COALDALE VORTAC. Cross MOURO at or above 15,000.

**MOURO TRANSITION (REVES5.MOURO):** From BUMPI direct MOURO then as filed.

**LOST COMMUNICATIONS:** If no transmissions are received within 8 DME of NLC TACAN, fly departure heading to intercept NLC 10 DME arc, arc to respective departure radial then via departure radial to assigned departure fix. Then via assigned route. Once established on departure radial climb to filed altitude.

# REEVES-FIVE DEPARTURE (REVES5.NLC)

Orig 12JUN25

LEMOORE, CALIFORNIA  
LEMOORE NAS (REEVES FIELD) (KNLC)

SW-2, 14 MAY 2026 to 11 JUN 2026

SW-2, 14 MAY 2026 to 11 JUN 2026