

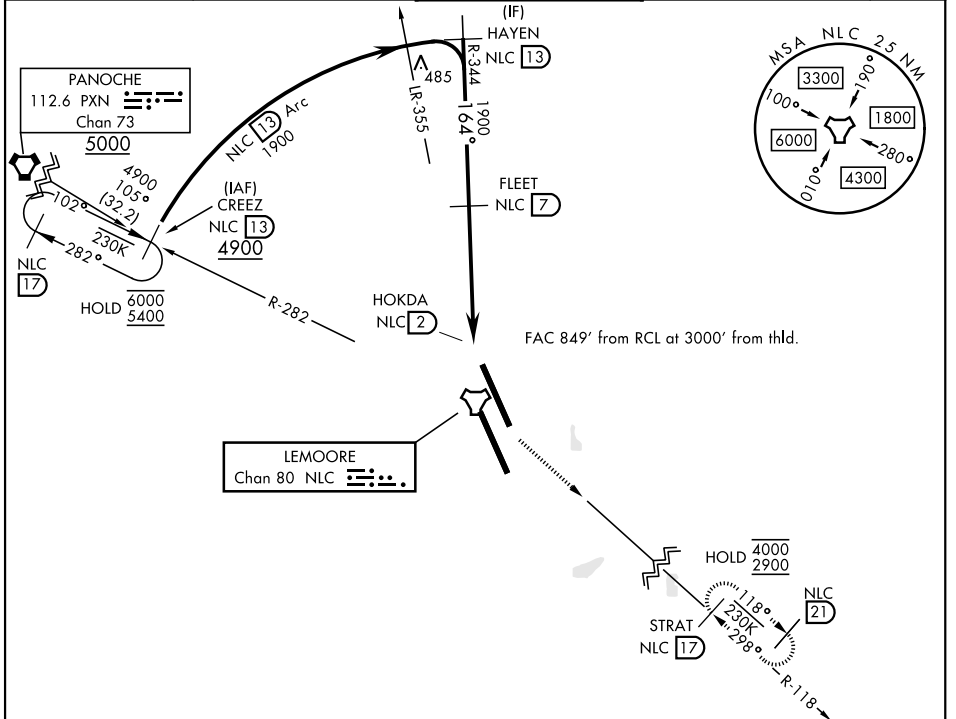
TACAN Y RWY 14L

LEMOORE NAS (REEVES FIELD) (KNLC)

TACAN Chan 80	NLC 164°	APCH CRS 164°	Rwy Idg 13,502 TDZE 219 Arprt Elev 228
-------------------------	--------------------	-------------------------	---

[USN]

<p>MISSED APPROACH: Climb to 700 then climbing left turn to 2900 direct STRAT and hold.</p>				
<p>ATIS★ 121.575 327.15</p>	<p>APP CON 124.1 269.025 (N) 118.15 269.025 (S)</p>	<p>TOWER★ 128.3 340.2</p>	<p>GND CON 121.65 305.2</p>	<p>ASR/ PAR</p>



SW-2, 14 MAY 2026 to 11 JUN 2026

SW-2, 14 MAY 2026 to 11 JUN 2026

EMERG SAFE ALT 100 NM 16,700

ELEV	228	TDZE	219
------	-----	------	-----

CATEGORY	A	B	C	D
S-14L	660-1 441 (500-1)	660-1 3/8 441 (500-1 3/8)	680-1 1/2 452 (500-1 1/2)	780-2 552 (600-2)
CIRCLING	680-1 452 (500-1)	680-1 1/2 452 (500-1 1/2)	780-2 552 (600-2)	

HIRL all rwys
REIL all rwys
TDZL/RCLS Rwy 32L

TACAN Y RWY 14L