

# RNAV (GPS) RWY 10

APCH CRS	Rwy Idg	4120
095°	TDZE	242
	Arpt Elev	243

[USA]

SIMMONS AAF (FORT BRAGG) (KFBG)

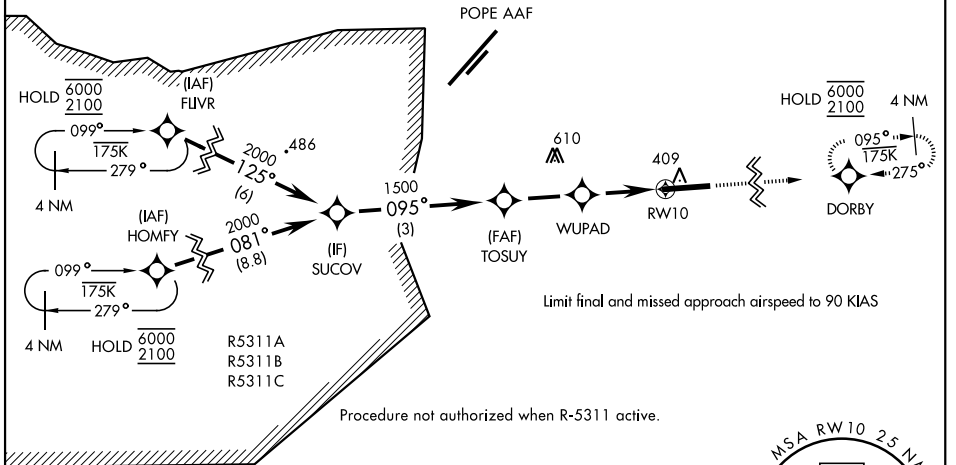
RNP APCH - GPS
RADAR required
▼ When local altimeter setting not received, use Pope AAF altimeter setting.

MISSED APPROACH: (Do not exceed 90 KIAS) Climb to 2100 direct DORBY and hold.

ATIS <b>139.25</b>	FAYETTEVILLE APP CON <b>133.0 290.25</b>	TOWER ★ <b>125.9 (CTAF) 240.625</b>	GND CON <b>121.9 229.4</b>
-----------------------	---	--	-------------------------------

Procedure not authorized at night.  
Rwy 10 helicopter visibility reduction below 1 mile not authorized.

For helicopter use only - 400 ft/NM MA CG required.

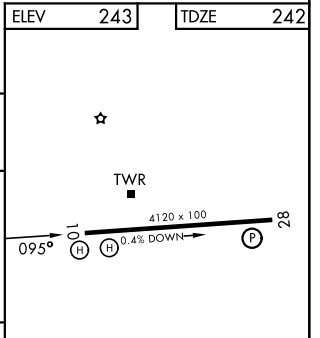
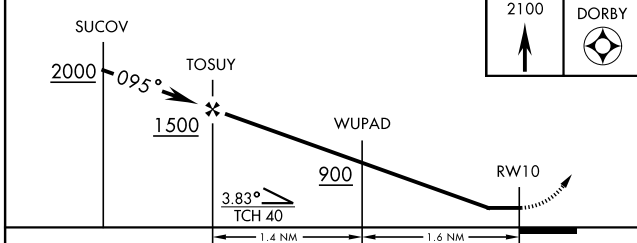


SE-2, 14 MAY 2026 to 11 JUN 2026

SE-2, 14 MAY 2026 to 11 JUN 2026



ELEV	243	TDZE	242
------	-----	------	-----



CATEGORY	A			B	C	D	MIRL Rwy 10-28 REL Rwy 28
LNVA MDA	660-1	418	(500-1)		NA		

# RNAV (GPS) RWY 10