

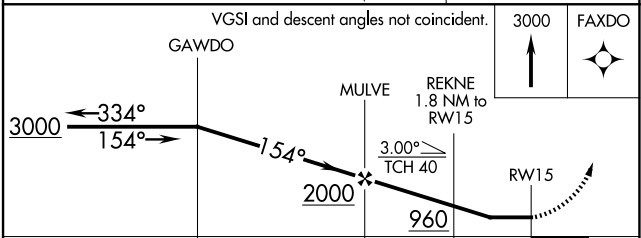
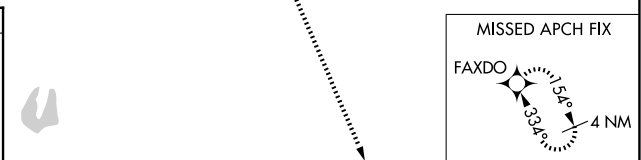
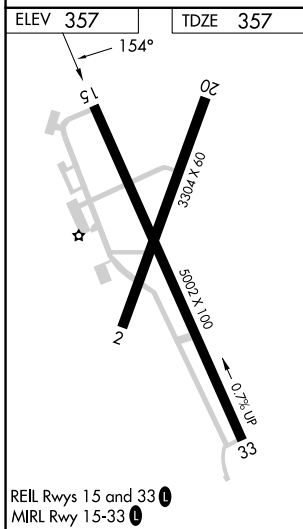
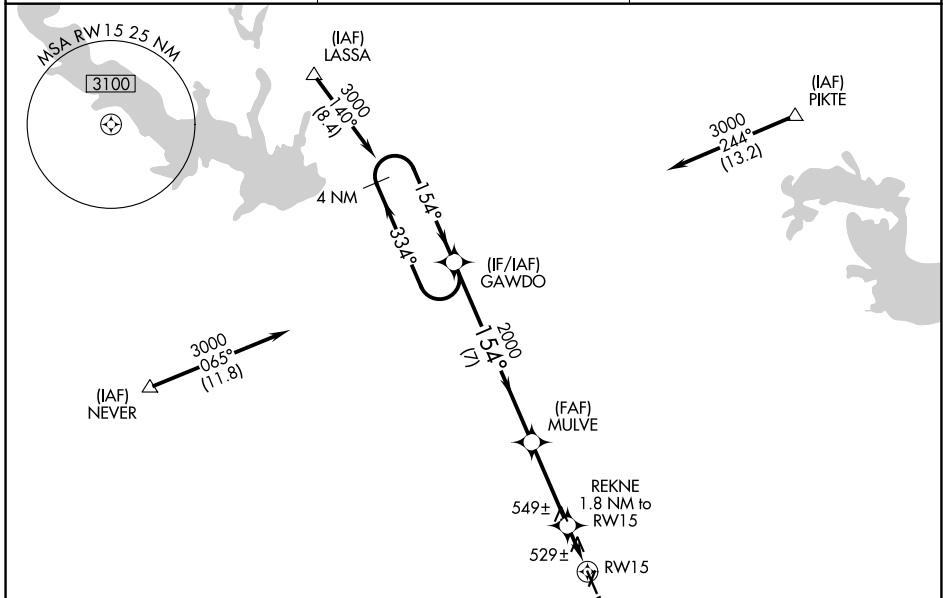
WAAS CH <b>90426</b> <b>W15A</b>	APP CRS <b>154°</b>	Rwy Ldg TDZE Apt Elev	<b>5002</b> <b>357</b> <b>357</b>
--	------------------------	-----------------------------	---

# RNAV (GPS) RWY 15

HARRISON COUNTY (ASL)

RNP APCH.	MISSED APPROACH: Climb to 3000 direct FAXDO and hold.
<p>▼ Rwy 15 helicopter visibility reduction below 1 SM NA.</p> <p>▲ NA When local altimeter setting not received, use Longview altimeter setting and increase all MDA 60 feet; increase LP Cat C visibility 1/8 mile. Procedure NA at night.</p>	

AWOS-3PT <b>118.675</b>	SHREVEPORT APP CON <b>119.9 335.55</b>	UNICOM <b>122.8 (CTAF) 0</b>
----------------------------	---	---------------------------------



CATEGORY	A	B	C	D
LP MDA	780-1	423 (500-1)	780-1 1/4 423 (500-1 1/4)	NA
LNAV MDA	800-1	443 (500-1)	800-1 3/8 443 (500-1 3/8)	NA

SC-2, 14 MAY 2026 to 11 JUN 2026

SC-2, 14 MAY 2026 to 11 JUN 2026