

WAAS CH <b>86926</b> <b>W33A</b>	APP CRS <b>334°</b>	Rwy Ldg TDZE Apt Elev	<b>5002</b> <b>349</b> <b>357</b>
--	------------------------	-----------------------------	---

# RNAV (GPS) RWY 33

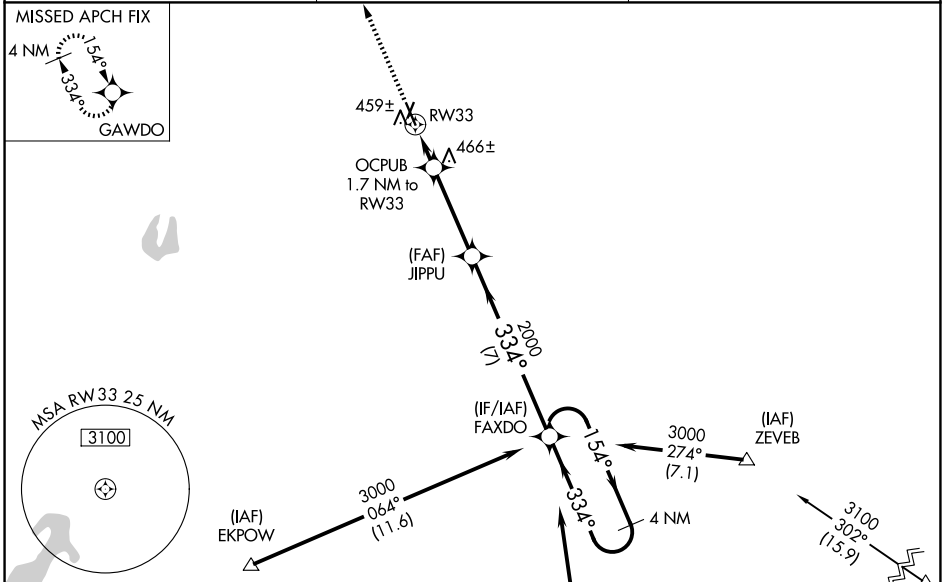
HARRISON COUNTY (ASL)

RNP APCH.

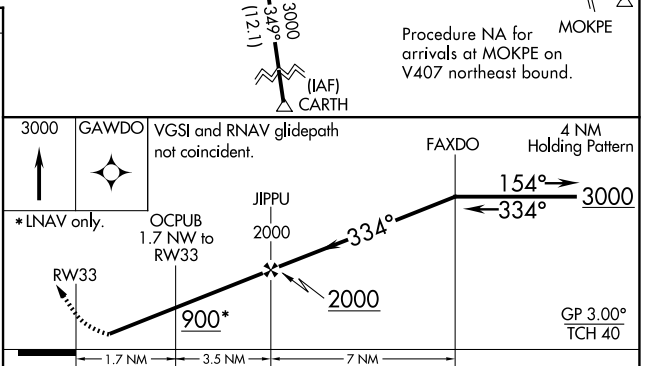
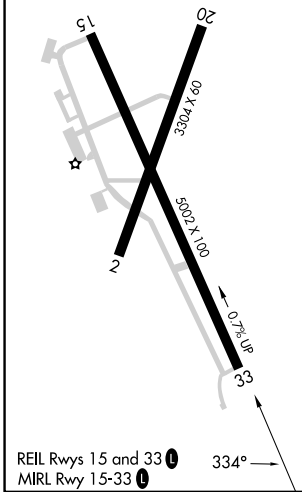
Baro-VNAV NA when using Longview altimeter setting. For uncompensated Baro-VNAV systems, LNAV/VNAV NA below -5°C (23°F) or above 40°C (104°F). Rwy 33 helicopter visibility reduction below 3/4 SM NA. When local altimeter setting not received, use Longview altimeter setting and increase all DA 52 feet and all MDA 60 feet; increase LPV all Cats visibility 1/8 mile, LNAV/VNAV all Cats and LNAV Cat C visibility 1/4 mile.

MISSED APPROACH: Climb to 3000 direct GAWDO and hold.

AWOS-3PT <b>118.675</b>	SHREVEPORT APP CON <b>119.9 335.55</b>	UNICOM <b>122.8 (CTAF)</b>
----------------------------	---	-------------------------------



ELEV 357	TDZE 349
----------	----------



CATEGORY	A	B	C	D
LPV DA		635-1 286 (300-1)		NA
LNAV/VNAV DA		658-1 309 (300-1)		NA
LNAV MDA	720-1	371 (400-1)	720-1 371 (400-1 1/8)	NA

SC-2, 14 MAY 2026 to 11 JUN 2026

SC-2, 14 MAY 2026 to 11 JUN 2026