

DUGWAY PROVING GROUND, UTAH

RNAV (GPS) RWY 12

(USA)

MICHAEL AAF (DUGWAY PROVING GROUND) (KDPG)

APCH CRS	Rwy Idg	10,000
122°	TDZE	4344
	Arprt Elev	4351

RNP APCH - GPS

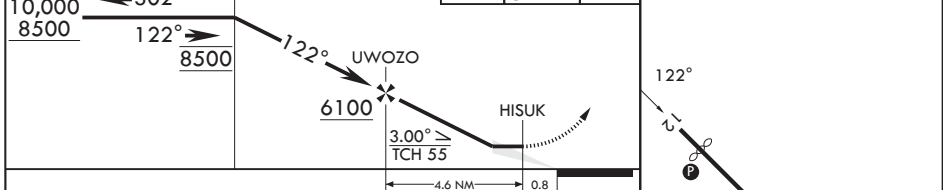
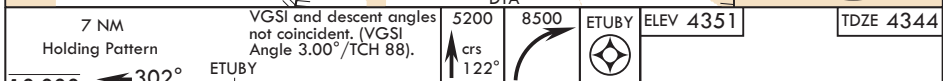
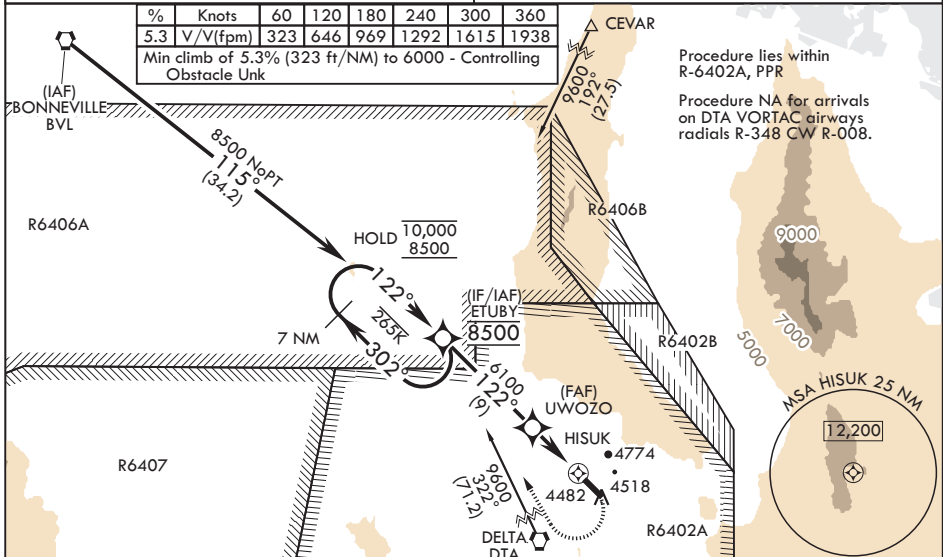
† Obtain local altimeter setting on CTAF; when not received, use Wendover altimeter setting.

MISSED APPROACH: Climb to 5200 (5360 when using Wendover altimeter setting) then climbing right turn to 8500 direct ETUBY and hold, continue climb in hold to 8500.

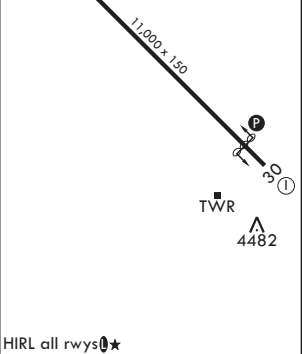
COVER CON SOUTH
134.1 363.5

CTAF
126.2 \star 270.3

%	Knots	60	120	180	240	300	360
5.3	V/V(fpm)	323	646	969	1292	1615	1938
Min climb of 5.3% (323 ft/NM) to 6000 - Controlling Obstacle Unk							



CATEGORY	A	B	C	D	E
LNAV MDA (5.3%)	4800-1	456 (500-1)	4800-1 $\frac{3}{8}$	456 (500-1 $\frac{3}{8}$)	
LNAV MDA	5140-1 796 (800-1)	5140-1 $\frac{1}{4}$ 796 (800-1 $\frac{1}{4}$)	5140-2 $\frac{1}{2}$	796 (800-2 $\frac{1}{2}$)	
CIRCLING	5140-1 790 (800-1)	5140-1 $\frac{1}{4}$ 790 (800-1 $\frac{1}{4}$)	5160-2 $\frac{1}{2}$ 810 (900-2 $\frac{1}{2}$)	5880-3 1530 (1600-3)	NA
† WENDOVER ALTIMETER SETTING MINIMUMS					
LNAV MDA (5.3%)	4960-1	616 (700-1)	4960-1 $\frac{3}{4}$	616 (700-1 $\frac{3}{4}$)	
LNAV MDA	5300-1 $\frac{1}{4}$ 956 (1000-1 $\frac{1}{4}$)	5300-1 $\frac{1}{2}$ 956 (1000-1 $\frac{1}{2}$)	5300-3	956 (1000-3)	
CIRCLING	5300-1 $\frac{1}{4}$ 950 (1000-1 $\frac{1}{4}$)	5300-1 $\frac{1}{2}$ 950 (1000-1 $\frac{1}{2}$)	5320-3 970 (1000-3)	6040-3 1690 (1700-3)	NA



DUGWAY PROVING GROUND, UTAH

MICHAEL AAF (DUGWAY PROVING GROUND) (KDPG)

Amdt 3 02OCT25

40°12'N - 112°56'W

RNAV (GPS) RWY 12

SW-4, 14 MAY 2026 to 11 JUN 2026

SW-4, 14 MAY 2026 to 11 JUN 2026