

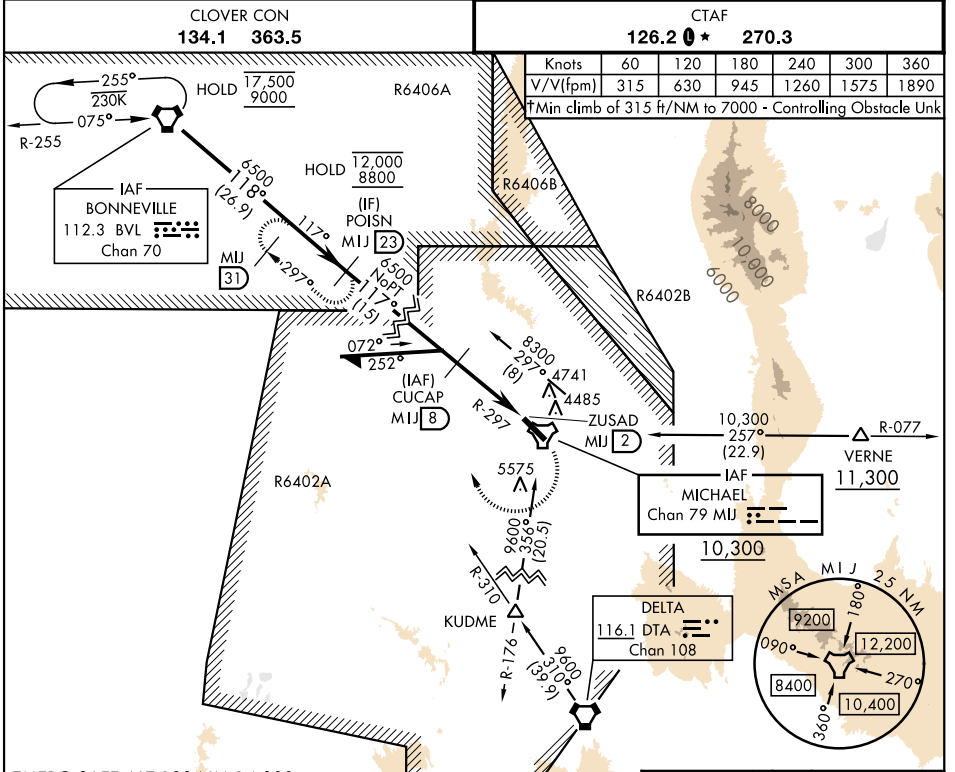
# TACAN RWY 12

TACAN MIJ Chan 79	APCH CRS 117°	Rwy Idg 10,000 TDZE 4344 Arprt Elev 4351
-------------------	---------------	--

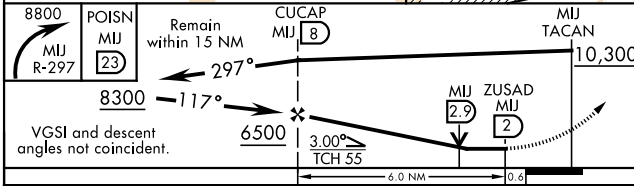
[USA] MICHAEL AAF (DUGWAY PROVING GROUND) (KDPG)

Procedure NA for arrival on BVL VORTAC via V200 southwest bound without holding at Bonneville. ATC clearance required. Procedure lies within R6402A, PPR. Use KENV-ENV (Wendover) altimeter when local altimeter not available. VDP not authorized with KENV-ENV (Wendover) altimeter setting.

MISSED APPROACH: Climbing right turn to 8800 via MIJ TACAN R-297 to POISN/MIJ 23 DME and hold.

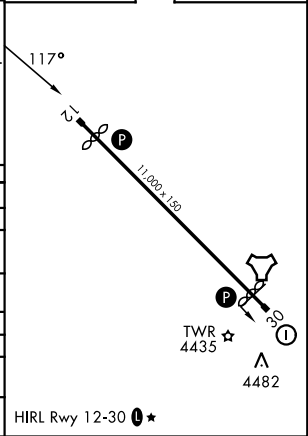


EMERG SAFE ALT 100 NM 14,000



ELEV 4351	TDZE 4344
-----------	-----------

CATEGORY	A	B	C	D	E
S-12†	4860-1	516 (600-1)	4860-1 $\frac{3}{8}$	516 (600-1 $\frac{3}{8}$ )	
S-12	5180-1 836 (900-1)	5180-1 $\frac{1}{4}$ 836 (900-1 $\frac{1}{4}$ )	5180-2 $\frac{1}{2}$	836 (900-2 $\frac{1}{2}$ )	
CIRCLING	5180-1 $\frac{1}{4}$	830 (900-1 $\frac{1}{4}$ )	5180-2 $\frac{1}{2}$ 830 (900-2 $\frac{1}{2}$ )	5880-3 1530 (1600-3)	6300-3 1950 (2000-3)
KENV - ENV (WENDOVER) ALTIMETER SETTING MINIMUMS					
S-12†	5020-1	676 (700-1)	5020-1 $\frac{7}{8}$	676 (700-1 $\frac{7}{8}$ )	
S-12	5340-1 $\frac{1}{4}$ 996(1000-1 $\frac{1}{4}$ )	5340-1 $\frac{1}{2}$ 996(1000-1 $\frac{1}{2}$ )	5340-3	996 (1000-3)	
CIRCLING	5340-1 $\frac{1}{4}$ 990(1000-1 $\frac{1}{4}$ )	5340-1 $\frac{1}{2}$ 990(1000-1 $\frac{1}{2}$ )	5340-3 990 (1000-3)	6040-3 1690(1700-3)	6460-3 2110 (2200-3)



DUGWAY PROVING GROUND, UTAH 40°12'N-112°56'W MICHAEL AAF (DUGWAY PROVING GROUND) (KDPG)

Amdt 4 19MAR26

# TACAN RWY 12

SW-4, 14 MAY 2026 to 11 JUN 2026

SW-4, 14 MAY 2026 to 11 JUN 2026