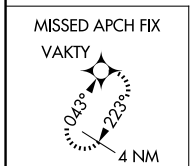
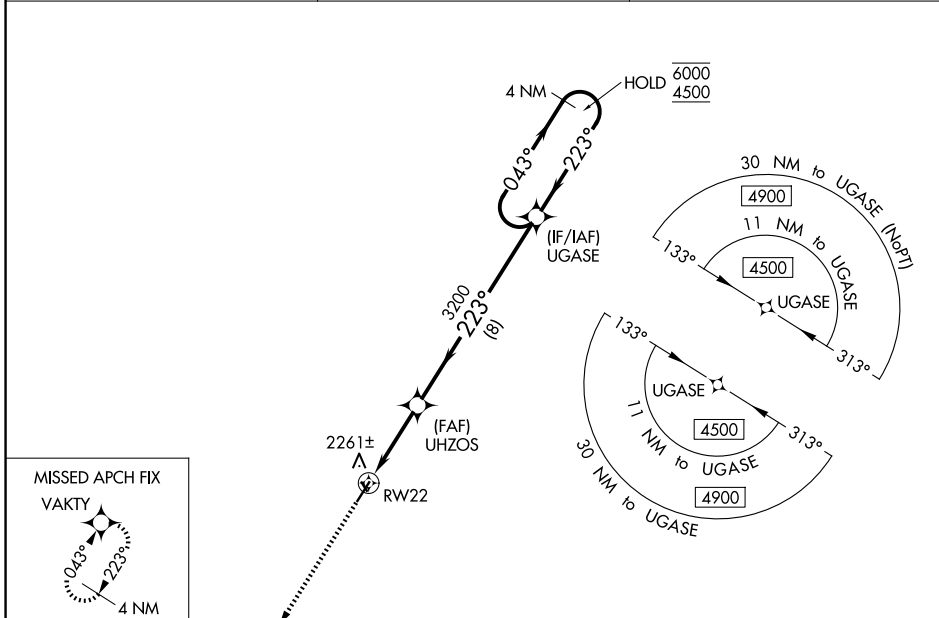


WAAS CH <b>99401</b> <b>W22A</b>	APP CRS <b>223°</b>	Rwy Ldg TDZE Apt Elev	<b>4500</b> <b>2132</b> <b>2135</b>
--	------------------------	-----------------------------	---

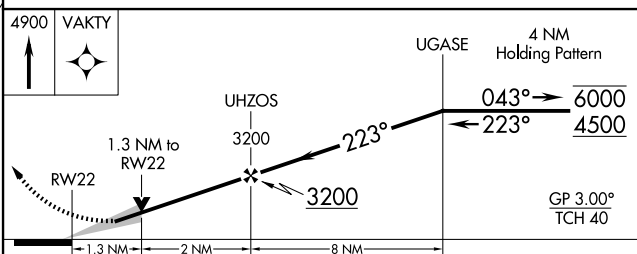
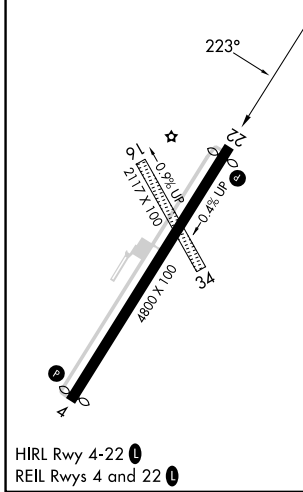
# RNAV (GPS) RWY 22

CATTARAUGUS COUNTY-OLEAN (OLE)

RNP APCH-GPS.		MISSED APPROACH: Climb to 4900 direct VAKTY and hold.
<p>▼ Circling NA to Rwys 16 and 34. For uncompensated Baro-VNAV systems, LNAV/VNAV NA below -1°C or above 54°C. When VGS1 inop, Straight-in/Circling Rwy 22 procedure NA at night.</p>		
AWOS-3 <b>118.375</b>	CLEVELAND CENTER <b>124.325 353.85</b>	UNICOM <b>122.8 (CTAF) ①</b>



ELEV 2135	<b>D</b>	TDZE 2132
-----------	----------	-----------



CATEGORY	A	B	C	D
LPV DA		2382-¾	250 (300-¾)	
LNAV/VNAV DA		2569-1¼	437 (500-1¼)	
LNAV MDA	2560-1	428 (500-1)	2560-1¼	428 (500-1¼)
CIRCLING	2620-1	485 (500-1)	2680-1½ 545 (600-1½)	2720-2 585 (600-2)

NE-2, 14 MAY 2026 to 11 JUN 2026

NE-2, 14 MAY 2026 to 11 JUN 2026