

LOC I-MWC <b>108.5</b>	APP CRS <b>148°</b>	Rwy Ldg TDZE Apt Elev	<b>4107</b> <b>745</b> <b>745</b>
---------------------------	------------------------	-----------------------------	---

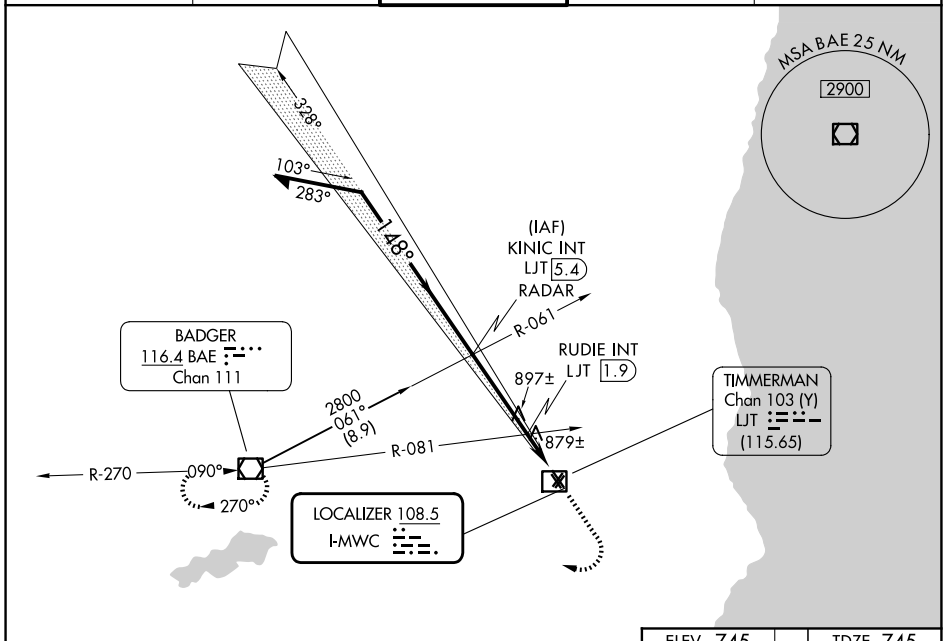
# LOC RWY 15L

LAWRENCE J TIMMERMAN (MWC)

**⚠** Rwy 15L helicopter visibility reduction below 3/4 SM NA.  
**⚠** Circling NA to Rwys 4R, 15R, 22L and 33L. Circling Rwy 4L, 33R NA at night.  
 \* Simultaneous reception of I-MWC and LJT DME required.

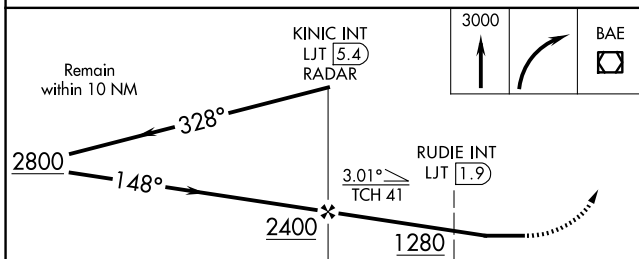
**MISSED APPROACH:**  
 Climb to 3000 then right turn direct BAE VOR/DME and hold.

ATIS <b>128.3</b>	MILWAUKEE APP CON <b>125.35 307.0</b>	<b>TIMMERMAN TOWER</b> ★ <b>120.5 (CTAF)</b> <b>📻</b>	GND CON <b>121.7</b>	UNICOM <b>122.95</b>
----------------------	--	--	-------------------------	-------------------------

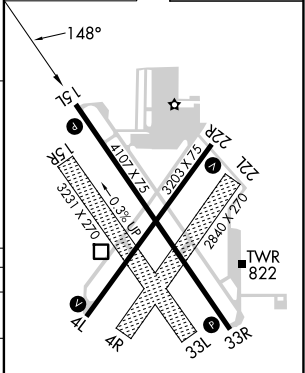


EC-3, 14 MAY 2026 to 11 JUN 2026

EC-3, 14 MAY 2026 to 11 JUN 2026



ELEV 745	TDZE 745
----------	----------



CATEGORY	A	B	C	D
S-LOC 15L	1280-1	535 (600-1)	1280-1½	535 (600-1½)
CIRCLING	1280-1 535 (600-1)	1340-1 595 (600-1)	1360-1¾ 615 (700-1¾)	1560-2¾ 815 (900-2¾)
RUDIE FIX MINIMUMS (DUAL VOR RECEIVERS OR DME REQUIRED) *				
S-LOC 15L	1180-1	435 (500-1)	1180-1¼	435 (500-1¼)
CIRCLING	1220-1 475 (500-1)	1340-1 595 (600-1)	1360-1¾ 615 (700-1¾)	1560-2¾ 815 (900-2¾)

REIL Rwys 4L, 15L, 22R and 33R <b>📻</b>					
MIRL Rwys 4L-22R and 15L-33R <b>📻</b>					
FAF to MAP 5.1 NM					
Knots	60	90	120	150	180
Min:Sec	5:06	3:24	2:33	2:02	1:42