

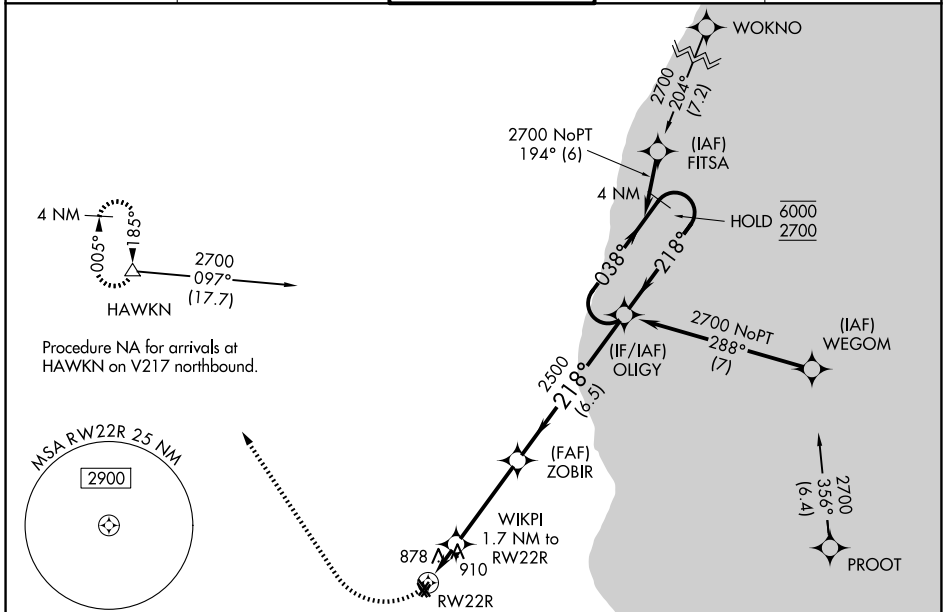
WAAS CH 69524 W22A	APP CRS 218°	Rwy Ldg TDZE 738 Apt Elev 745	3203
--	------------------------	---	-------------

RNAV (GPS) RWY 22R

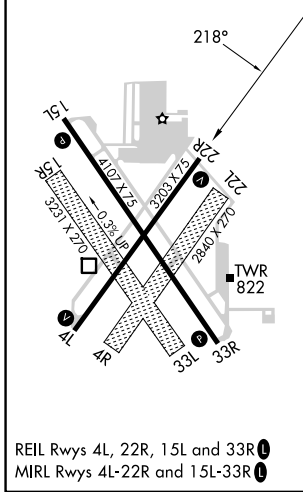
LAWRENCE J TIMMERMAN (MWC)

RNP APCH - GPS.		<p>⚠ Rwy 22R helicopter visibility reduction below 3/4 SM NA. ⚠ Circling NA to Rwys 4R, 15R, 22L and 33L. Circling Rwy 4L, 33R NA at night.</p>		<p>MISSED APPROACH: Climbing right turn to 3000 direct HAWKN and hold.</p>	
-----------------	--	---	--	--	--

ATIS 128.3	MILWAUKEE APP CON 125.35 307.0	TIMMERMAN TOWER ★ 120.5 (CTAF) ①	GND CON 121.7	UNICOM 122.95
----------------------	--	--	-------------------------	-------------------------



ELEV 745	TDZE 738
----------	----------



3000	HAWKN	VGSI and descent angles not coincident (VGSI Angle 4.00/TCH 45).		4 NM Holding Pattern	
		WIKPI 1.7 NM to RW22R	ZOBIR	OLYG	
		0.9 NM to RW22R	3.00° TCH 36	038° → 6000 ← 218° 2700	
		1300	2500		
		0.9	0.8 NM	3.7 NM	6.5 NM
CATEGORY	A	B	C	D	
LP MDA	1160-1	422 (500-1)	1160-1¼ 422 (500-1¼)	422 (500-1¼)	
LNAV MDA	1160-1	422 (500-1)	1160-1¼ 422 (500-1¼)	422 (500-1¼)	
CIRCLING	1220-1 475 (500-1)	1340-1 595 (600-1)	1360-1¾ 615 (700-1¾)	1560-2¾ 815 (900-2¾)	

EC-3, 14 MAY 2026 to 11 JUN 2026

EC-3, 14 MAY 2026 to 11 JUN 2026