

LOC I-SKC <b>109.5</b>	APP CRS <b>103°</b>	Rwy Ldg <b>5849</b>
		TDZE <b>901</b>
		Apt Elev <b>912</b>


# ILS or LOC RWY 10

WAUKESHA COUNTY (U/S)

**RADAR required for procedure entry.**

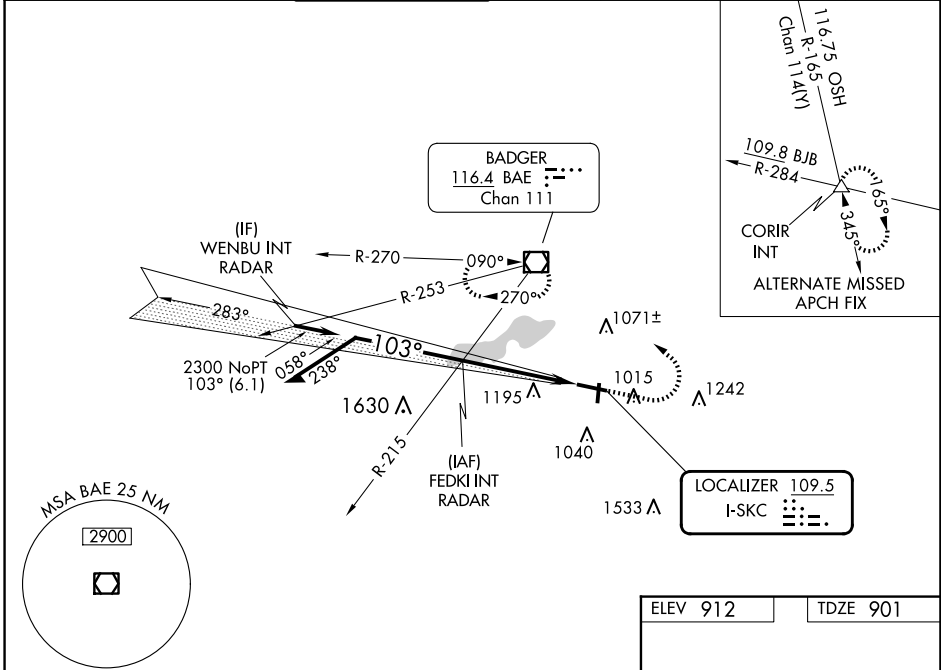
**▼** For inop ALS, increase S-LOC 10 visibility to 1½ SM. When local altimeter setting not received, use MWC altimeter setting and increase S-ILS 10 DA to 1149 feet; increase all MDAs 60 feet and S-LOC 10 visibility Cats C and D ½ SM, and Circling visibility Cats C and D ¼ SM.

**MALSR**



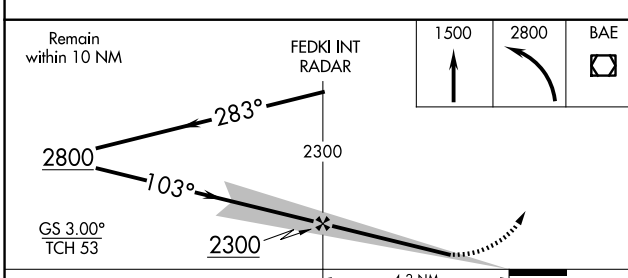
**MISSED APPROACH:** Climb to 1500 then climbing left turn to 2800 direct BAE VOR/DME and hold, continue climb-in-hold to 2800.

ATIS <b>118.875</b>	MILWAUKEE APP CON <b>125.35 307.0</b>	WAUKESHA TOWER ★ <b>123.7 (CTAF)</b>	GND CON <b>121.6</b>	CLNC DEL <b>121.6</b>	CLNC DEL <b>128.7</b> (When twr closed)	UNICOM <b>122.95</b>
------------------------	--	---	-------------------------	--------------------------	---	-------------------------

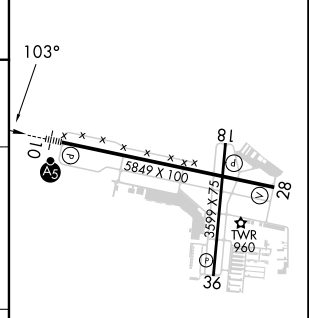


EC-3, 14 MAY 2026 to 11 JUN 2026

EC-3, 14 MAY 2026 to 11 JUN 2026



ELEV 912	TDZE 901
----------	----------



CATEGORY	A	B	C	D
S-ILS 10		1101-½	200 (200-½)	
S-LOC 10	1400-½	499 (500-½)	1400-1	499 (500-1)
<b>C</b> CIRCLING	1460-1 548 (600-1)	1500-1 588 (600-1)	1540-1¾ 628 (700-1¾)	1640-2¼ 728 (800-2¼)

HIRL Rwy 10-28	
MIRL Rwy 18-36	
REIL Rwy 28	
REIL Rws 18 and 36	
FAF to MAP 4.2 NM	
Knots	60 90 120 150 180
Min:Sec	4:12 2:48 2:06 1:41 1:24