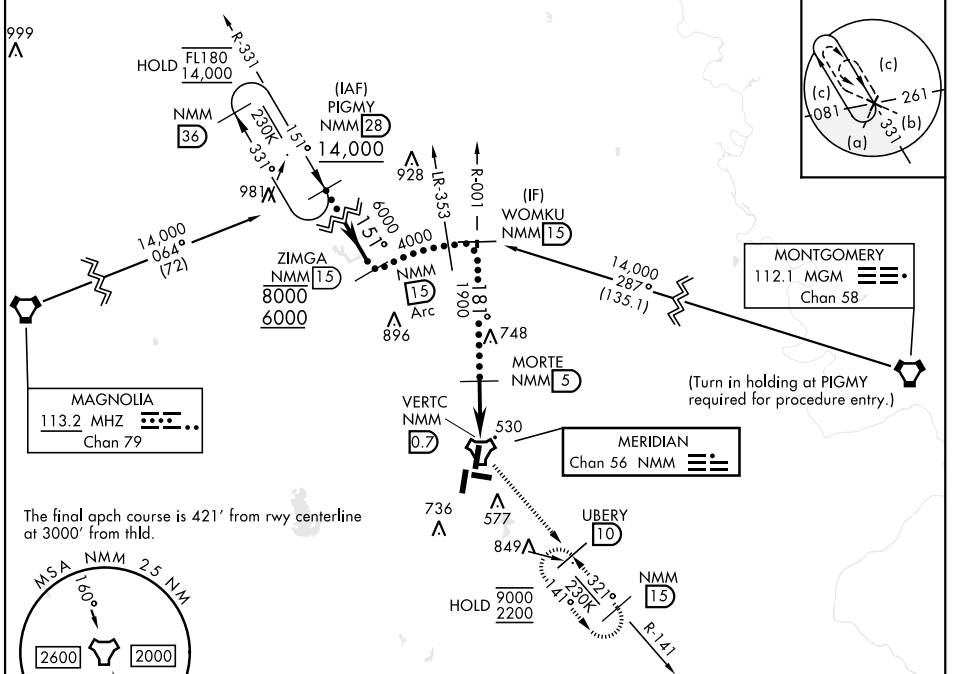


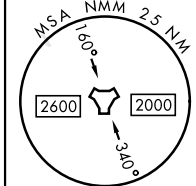
TACAN NMM Chan 56	APCH CRS 181°	Rwy ldg TDZE Arprt Elev 8000 316 316	[USN]	MERIDIAN NAS (MC CAIN FIELD) (KNMM)
-----------------------------	-------------------------	--	-------	-------------------------------------

▼ * When ALS inop, increase vis to 1 3/8 miles.
 ** Circling CAT C remain within 1.7 NM, CAT D within 2.3 NM, CAT E within 4.5 NM.

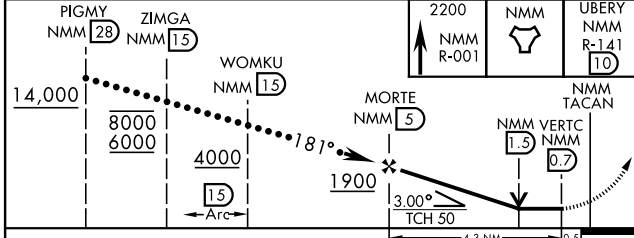
APP CON ATIS ★ 120.5 269.325 (S) 379.275 (N) 120.95 276.4 (W) 121.275 348.7 (E)	MC CAIN TOWER ★ 126.2 340.2 Rwy 01L, 19L, and 28 126.2 360.2 Rwy 01R, 19R, and 10	MC CAIN GND CON 336.4	ASR/PAR
--	---	---------------------------------	---------



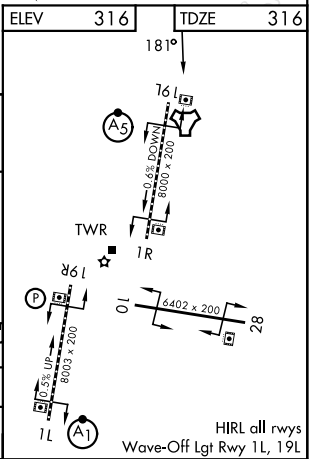
The final apch course is 421' from rwy centerline at 3000' from thld.



EMERG SAFE ALT 100 NM 3700



CATEGORY	C	D	E
S-19L *	800-1	484	(500-1)
CIRCLING**	840-1 1/2 524 (600-1 1/2)	880-2 564 (600-2)	1080-2 3/4 764 (800-2 3/4)



SC-4, 14 MAY 2026 to 11 JUN 2026

SC-4, 14 MAY 2026 to 11 JUN 2026