

TACAN NMM Chan 56	APCH CRS 025°	Rwy Idg TDZE Arprt Elev	8003 254 316
-----------------------------	-------------------------	-------------------------------	---

[USN]

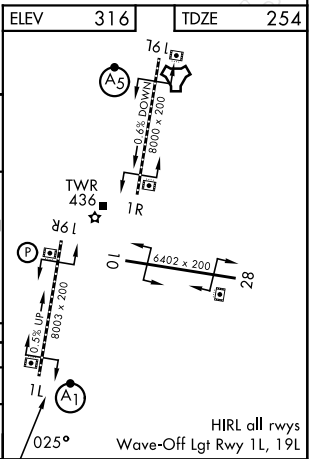
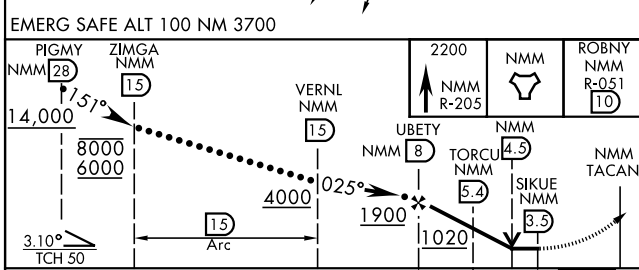
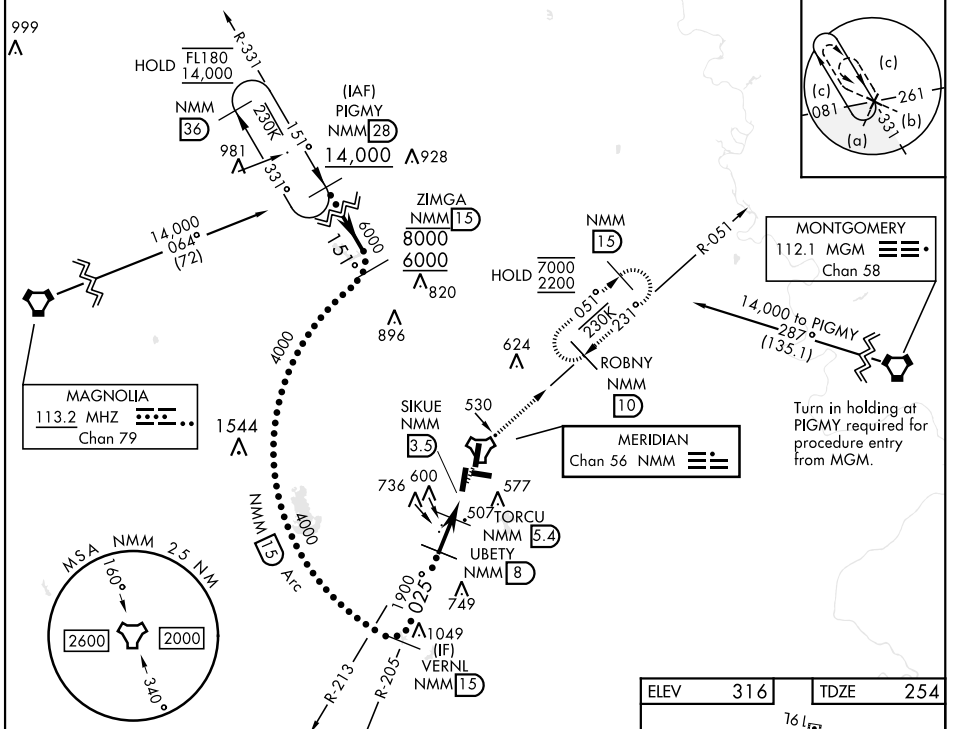
MERIDIAN NAS (MC CAIN FIELD) (KNMM)

▼ * When ALS inop, increase vis to 1 3/8 miles.
 ** Circling CAT C remain within 1.7 NM, CAT D within 2.3 NM, CAT E within 4.5 NM.



MISSED APPROACH: Climb to 2200 via NMM TACAN R-205 to NMM then via R-051 to ROBNY and hold.

ATIS* 290.525	APP CON 120.5 269.325 (S) 379.275 (N) 120.95 276.4 (W) 121.275 348.7 (E)	MC CAIN TOWER* 126.2 340.2 Rwy 01L, 19L, and 28 126.2 360.2 Rwy 01R, 19R, and 10	MC CAIN GND CON 336.4	ASR/PAR
-------------------------	--	--	---------------------------------	---------



ELEV	316	TDZE	254
CATEGORY	C	D	E
S-1L *	760-1	507 (500-1)	
CIRCLING **	840-1 1/2 524 (600-1 1/2)	880-2 564 (600-2)	1080-2 3/4 764 (800-2 3/4)

SC-4, 14 MAY 2026 to 11 JUN 2026

SC-4, 14 MAY 2026 to 11 JUN 2026

HIRL all rwys
Wave-Off Lgt Rwy 1L, 19L