

MERIDIAN, MISSISSIPPI

ILS Y or LOC/DME Y RWY 19L

| | | |
|---|-------------------------|---|
| LOC/DME I-NMM 109.7 Chan 34 | APCH CRS 191° | Rwy Ldg TDZE 316 Arprt Elev 316 |
|---|-------------------------|---|

[USN]

MERIDIAN NAS (MC CAIN FIELD) (KNMM)

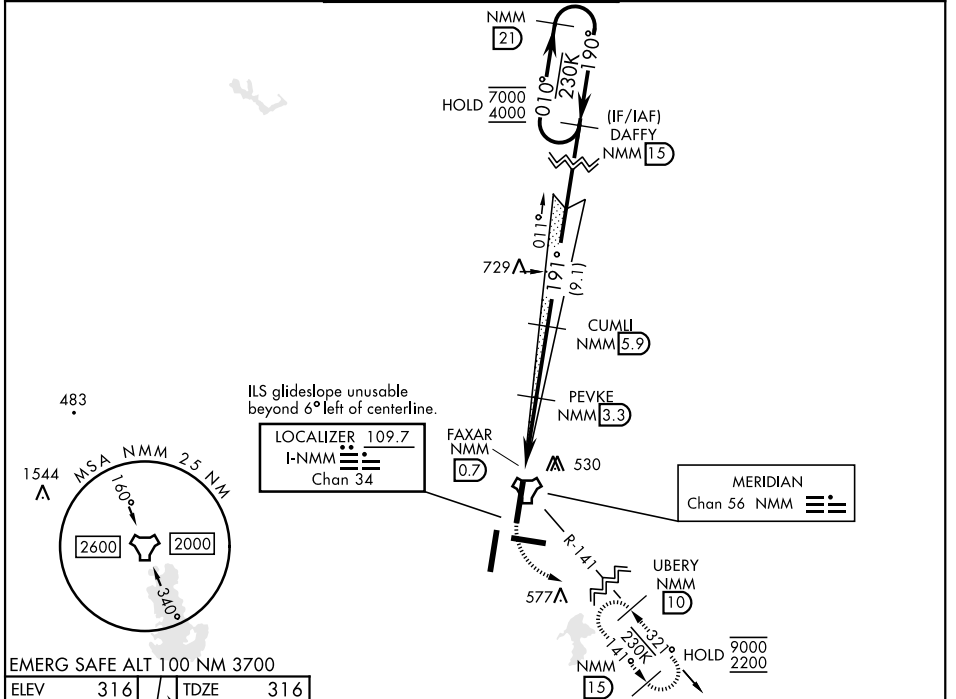
TACAN and RADAR required.

▼ *When ALS inop, increase vis to ¾ mile.
 **When ALS inop, increase CAT AB vis to 1 mile, CAT CDE vis to 1½ miles.
 ***Circling CAT B remain within 1.5 NM, CAT C within 1.7 NM, CAT D within 2.3 NM, CAT E within 4.5 NM.



MISSED APPROACH: Climb to 800, then climbing left turn to 2200 to intercept NMM R-141 to UBERY and hold.

| | | | |
|--------------------------|---|--|--------------|
| APP CON | MC CAIN TOWER ★ | MC CAIN GND CON | ASR/PAR |
| ATIS ★ 290.525 | 120.5 269.325 (S) 379.275 (N) 120.95 276.4 (W) 121.275 348.7 (E) | 126.2 340.2 (01L, 19L, 28) 126.2 360.2 (01R, 19R, 10) | 336.4 |



| | | | | | | |
|---|----------------------|----------------------|------------------------|----------------------|-------------------------|--------------------|
| <p>HIRL all rwys Wave-Off Lgt Rwy 1L, 19L</p> | 800 | 2200 | UBERY NMM 10 | DAFFY NMM 15 | NMM 21 | |
| | | | PEVKE NMM 3.3 | CUMLI NMM 5.9 | 7000 4000 | |
| | | | FAXAR NMM 0.7 | 1360 | 2200 | GS 3.00° TCH 49 |
| | CATEGORY | A | B | C | D | E |
| S-ILS 19L * | 516-½ | | | | | |
| S-LOC 19L ** | 740-½ | 424 (500-½) | 200 (200-½) | 740-¾ | 424 (500-¾) | |
| CIRCLING *** | 820-1 504 (600-1) | 840-1 524 (600-1) | 840-1½ 524 (600-1½) | 880-2 564 (600-2) | 1080-2¾ 764 (600-2¾) | |

MERIDIAN, MISSISSIPPI

32°33'N-88°33'W

MERIDIAN NAS (MC CAIN FIELD) (KNMM)

Amdt 1 22JAN26

ILS Y or LOC/DME Y RWY 19L

SC-4, 14 MAY 2026 to 11 JUN 2026

SC-4, 14 MAY 2026 to 11 JUN 2026