

MERIDIAN, MISSISSIPPI

# RNAV (GPS) RWY 19L

WAAS CH <b>78906</b> W19A	APCH CRS <b>191°</b>	Rwy ldg TDZE Arpt Elev	<b>8000</b> <b>316</b> <b>316</b>
---------------------------------	-------------------------	------------------------------	---

(USN) (MIL)

MERIDIAN NAS (MC CAIN FLD) (KNMM)

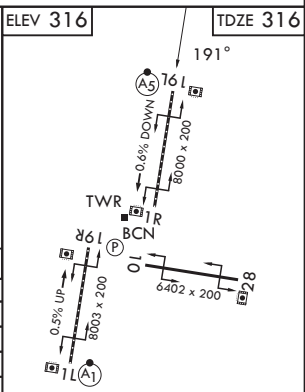
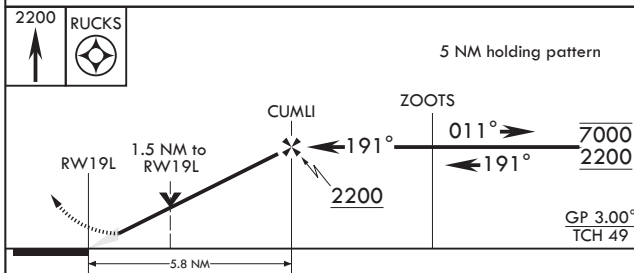
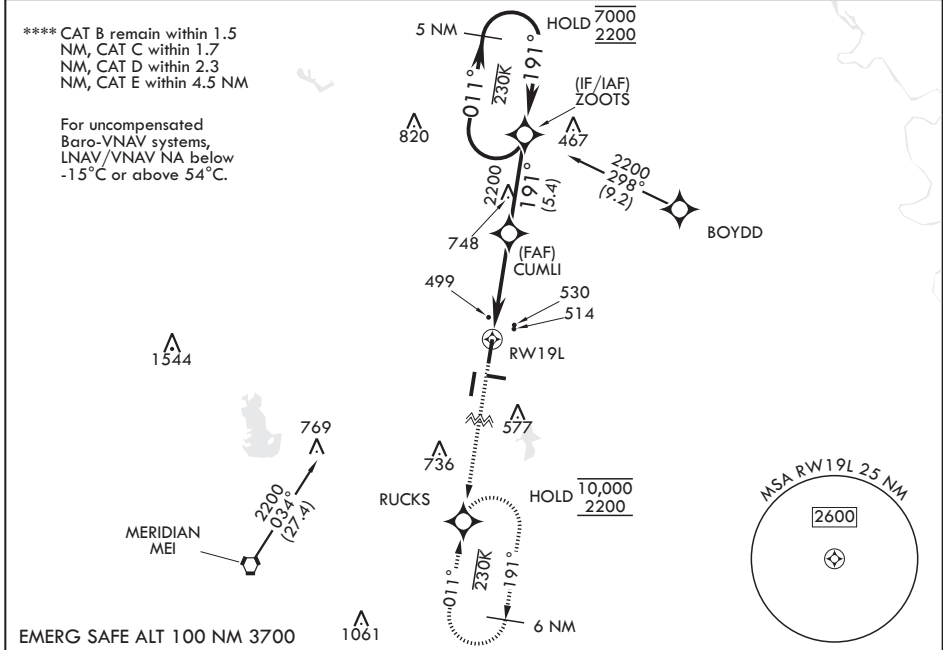
RNP APCH.



MISSED APPROACH: Climb to 2200 direct RUCKS and hold.

▼ \* When ALS inop, increase vis to 3/4 mile.  
 \*\* When ALS inop, increase vis to 1 3/8 miles.  
 \*\*\* When ALS inop, increase CAT AB vis to 1 mile, increase CAT CDE vis to 1 1/2 miles.

ATIS★ <b>290.525</b>	APP CON <b>120.5 269.325 S</b> <b>379.275 N</b> <b>120.95 276.4 W</b> <b>121.275 348.7 E</b>	MC CAIN TOWER★ <b>126.2 340.2 RWY 01L, 19L AND 28</b> <b>126.2 360.2 RWY 01R, 19R AND 10</b>	MC CAIN GND CON <b>336.4</b>	ASR/PAR
-------------------------	--	--	---------------------------------	---------



CATEGORY	A	B	C	D	E
LPV DA*	516-½		200	(200-½)	
LNAV/VNAV DA**	836-1		520	(600-1)	
LNAV MDA***	840-½	524 (600-½)	840-1	524 (600-1)	
CIRCLING****	840-1	524 (600-1)	840-1½ 524 (600-1½)	880-2 564 (600-2)	1080-2¼ 764 (800-2¼)

HIRL all rwys  
Wave-Off Lights Rwy 1L and 19L

MERIDIAN, MISSISSIPPI  
Amdt 5 27NOV25

32°33'N - 88°33'W

MERIDIAN NAS (MC CAIN FLD) (KNMM)

# RNAV (GPS) RWY 19L

SC-4, 14 MAY 2026 to 11 JUN 2026

SC-4, 14 MAY 2026 to 11 JUN 2026