

MERIDIAN, MISSISSIPPI

# TACAN X RWY 19L

TACAN NMM Chan <b>56</b>	APCH CRS <b>181°</b>	Rwy Ldg TDZE Arprt Elev <b>8000</b> <b>316</b> <b>316</b>
-----------------------------	-------------------------	--

[USN]

MERIDIAN NAS (MC CAIN FIELD) (KNMM)

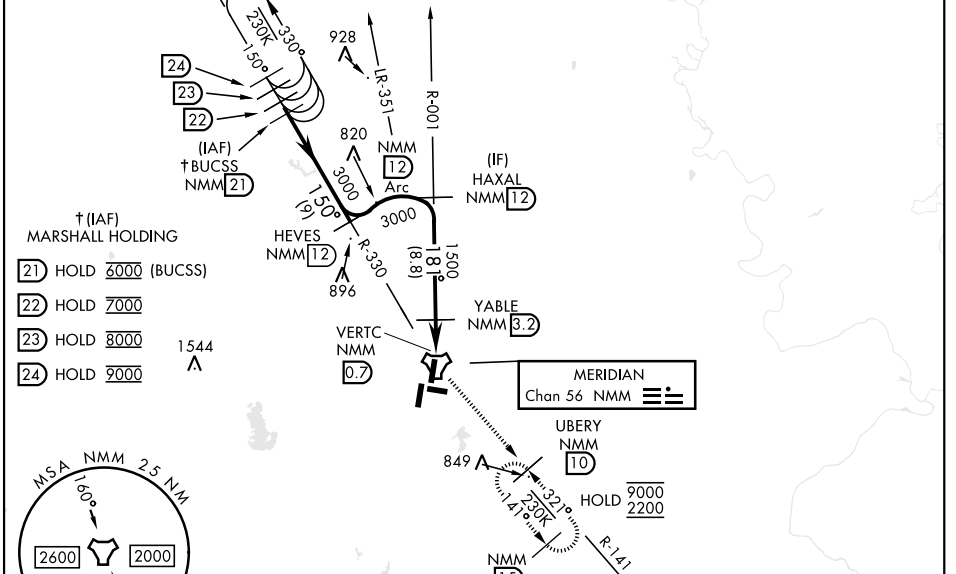
RADAR required  
 ▼ \*When ALS inop, increase CAT AB vis to 1 miles;  
 CAT CD vis to 1½ miles.  
 \*\*Circling CAT B remain within 1.5 NM,  
 CAT C within 1.7 NM, CAT D within 2.3 NM.



MISSED APPROACH: Climb to 2200 direct NMM TACAN then turn left NMM R-141 direct UBERY and hold.

ATIS ★ <b>290.525</b>	APP CON <b>120.5 269.325</b> (S) <b>379.275</b> (N) <b>120.95 276.4</b> (W) <b>121.275 348.7</b> (E)	MC CAIN TOWER ★ <b>126.2 340.2</b> Rwy 01L, 19L, and 28 <b>126.2 360.2</b> Rwy 01R, 19R, and 10	MC CAIN GND CON <b>336.4</b>	ASR/PAR
--------------------------	--	---	---------------------------------	---------

## CV-1 PROCEDURE: USE RESTRICTED TO TW-1 AIRCRAFT ONLY.

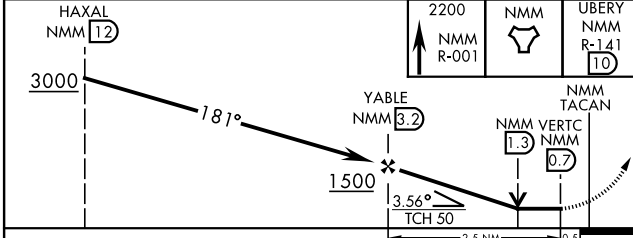


SC-4, 14 MAY 2026 to 11 JUN 2026

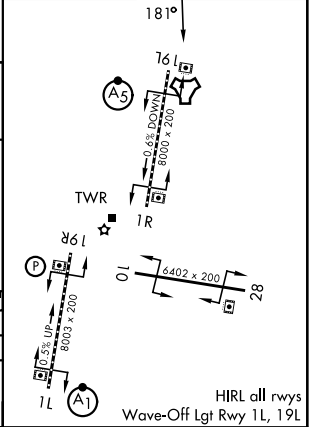
SC-4, 14 MAY 2026 to 11 JUN 2026



EMERG SAFE ALT 100 NM 3700



ELEV	316	TDZE	316
------	-----	------	-----



CATEGORY	A	B	C	D
S-19L*	780-½ 464	(500-½)	780-1 464	(500-1)
CIRCLING**	820-1 504 (600-1)	840-1 524 (600-1)	840-1½ 524 (600-1½)	880-2 564 (600-2)

MERIDIAN, MISSISSIPPI  
 Orig 22JAN26

32°33'N -88°33'W

MERIDIAN NAS (MC CAIN FIELD) (KNMM)

# TACAN X RWY 19L

HIRL all rwys  
 Wave-Off Lgt Rwy 1L, 19L