

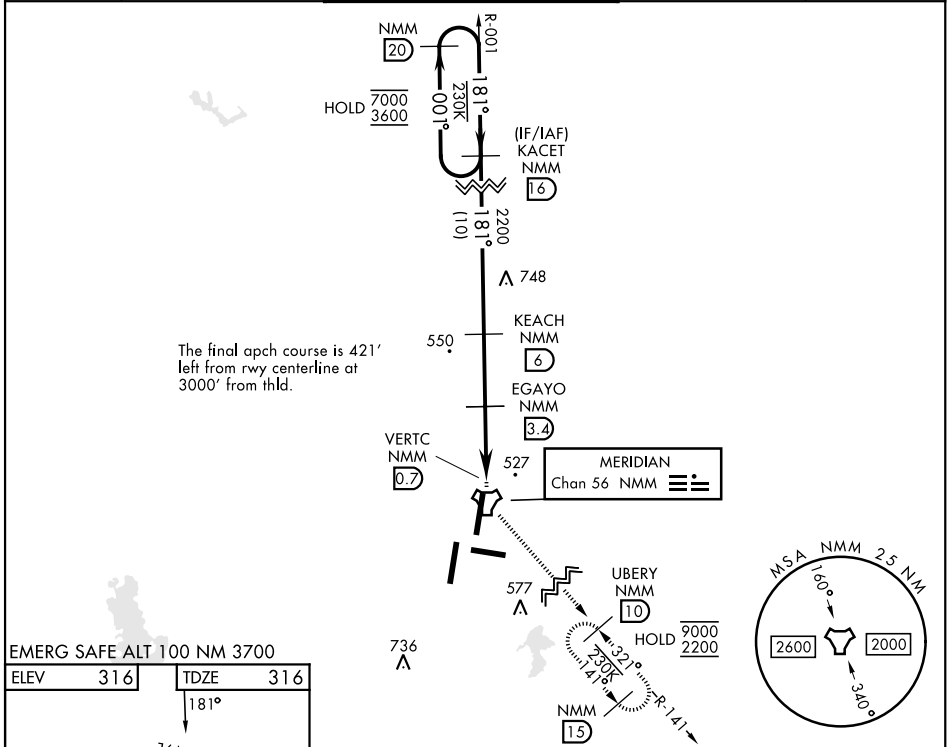
MERIDIAN, MISSISSIPPI

TACAN Y RWY 19L

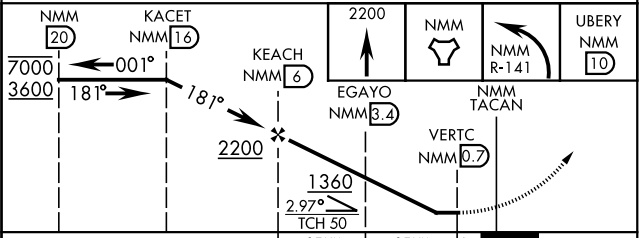
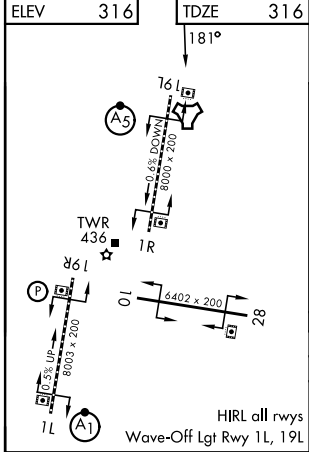
TACAN NMM Chan 56	APCH CRS 181°	Rwy Ldg TDZE Arprt Elev 8000 316 316	[USN]	MERIDIAN NAS (MC CAIN FIELD) (KNMM)
-----------------------------	-------------------------	-----------------------------------------------------------------------	-------	-------------------------------------

RADAR required	MALSR 	MISSED APPROACH: Climb to 2200 direct NMM TACAN then turn left NMM R-141 direct UBERY and hold.
<p>▼ * When ALS inop, increase CAT AB vis to 1 mile; CDE vis to 1½ miles. ** Circling CAT B remain within 1.5 NM, CAT C within 1.7 NM, CAT D within 2.3 NM, CAT E within 4.5 NM.</p>		

APP CON	MC CAIN TOWER ★	MC CAIN GND CON	ASR/PAR
ATIS ★ 290.525	120.5 269.325 (S) 379.275 (N) 120.95 276.4 (W) 121.275 348.7 (E)	126.2 340.2 Rwy 01L, 19L, and 28 126.2 360.2 Rwy 01R, 19R, and 10	336.4



EMERG SAFE ALT 100 NM 3700



CATEGORY	A	B	C	D	E
S-19L *	780 ½	464 (500-½)	780-1	464	(500-1)
CIRCLING **	820-1 504 (600-1)	840-1 524 (600-1)	840-1½ 524 (600-1½)	880-2 564 (600-2)	1080-2¾ 764 (800-2¾)

MERIDIAN, MISSISSIPPI 32° 33' N - 88° 33' W MERIDIAN NAS (MC CAIN FIELD) (KNMM)

Amtd 3 22JAN26

TACAN Y RWY 19L

SC-4, 14 MAY 2026 to 11 JUN 2026

SC-4, 14 MAY 2026 to 11 JUN 2026