

LOC I-FHU	APP CRS	Rwy Ldg	12001
109.9	260°	TDZE	4629
		Apt Elev	4719

ILS or LOC RWY 26

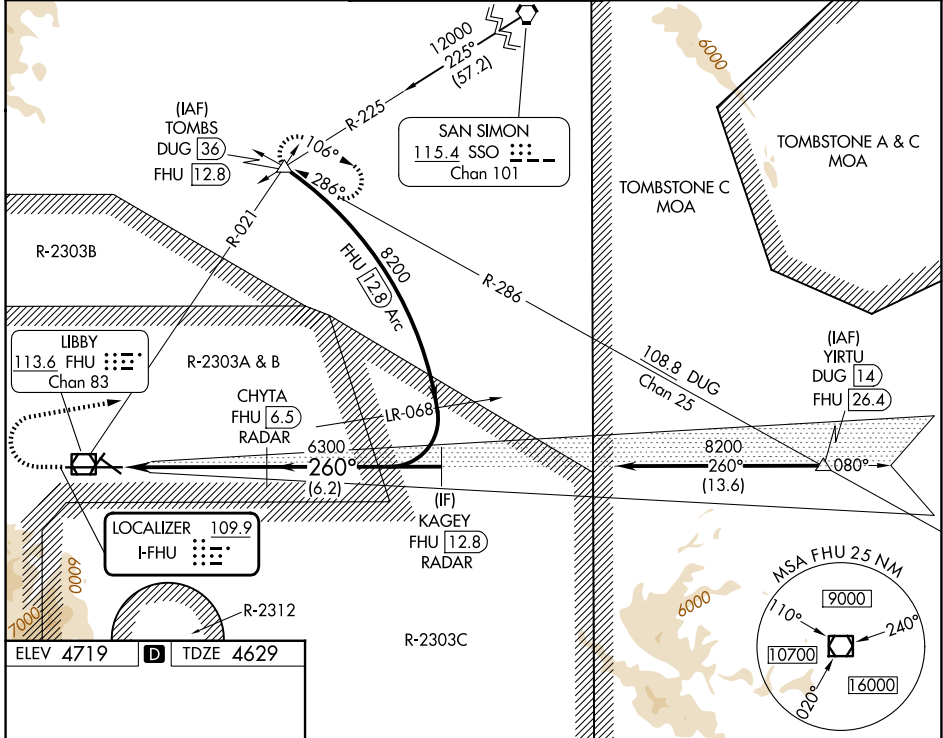
SIERRA VISTA MUNI-LIBBY AAF (FHU)

DME or RADAR required.

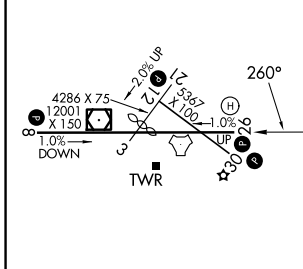
⚠ Circling NA south of Rwy 8 and 30.

MISSED APPROACH: Climb to 5300 then climbing right turn to 9500 on heading 067° and FHU VOR/DME R-021 to TOMBS INT/DUG 36 DME and hold, continue climb-in-hold to 9500.

ATIS	LIBBY AAF GCA*	LIBBY TOWER*	GND CON	UNICOM
134.75 263.025	127.05 254.25	124.95 (CTAF) 0 284.75	121.7 268.7	122.95



ELEV 4719	D	TDZE 4629
-----------	----------	-----------



5300	9500	TOMBS	VGSI and ILS glidepath not coincident (VGSI Angle 3.00/TCH 50).	KAGEY FHU 12.8 RADAR
↑	hdg 067°	FHU R-021	CHYTA FHU 6.5 RADAR	FHU 1.4
				6300
				8200
				GS 3.00°
				TCH 49
				5.2 NM
				6.2 NM

HIRL Rwy 8-26				
MIRL Rwy 3-21 and 12-30				
FAF to MAP 5.2 NM				
CATEGORY	A	B	C	D
S-ILS 26	4829-¾ 200 (200-¾)			
S-LOC 26	5020-1	391 (400-1)	5020-1¼	391 (400-1¼)
CIRCLING	5160-1 441 (500-1)	5180-1 461 (500-1)	5180-1½ 461 (500-1½)	5280-2 561 (600-2)

SW-4, 14 MAY 2026 to 11 JUN 2026

SW-4, 14 MAY 2026 to 11 JUN 2026