

| | | |
|-------------|----------|-------------|
| APP CRS | Rwy Ldg | 4001 |
| 104° | TDZE | 1057 |
| | Apt Elev | 1072 |

RNAV (GPS) Y RWY 10

MOUNT WASHINGTON RGNL (H1E)

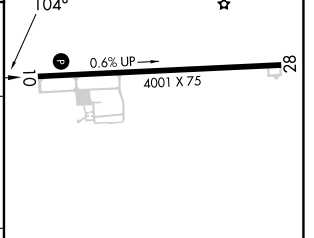
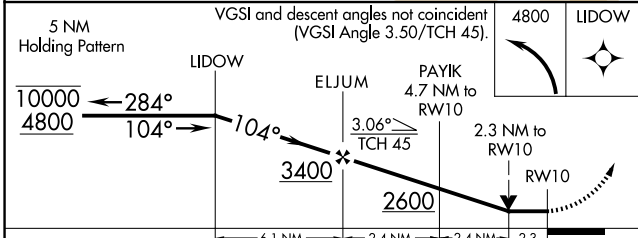
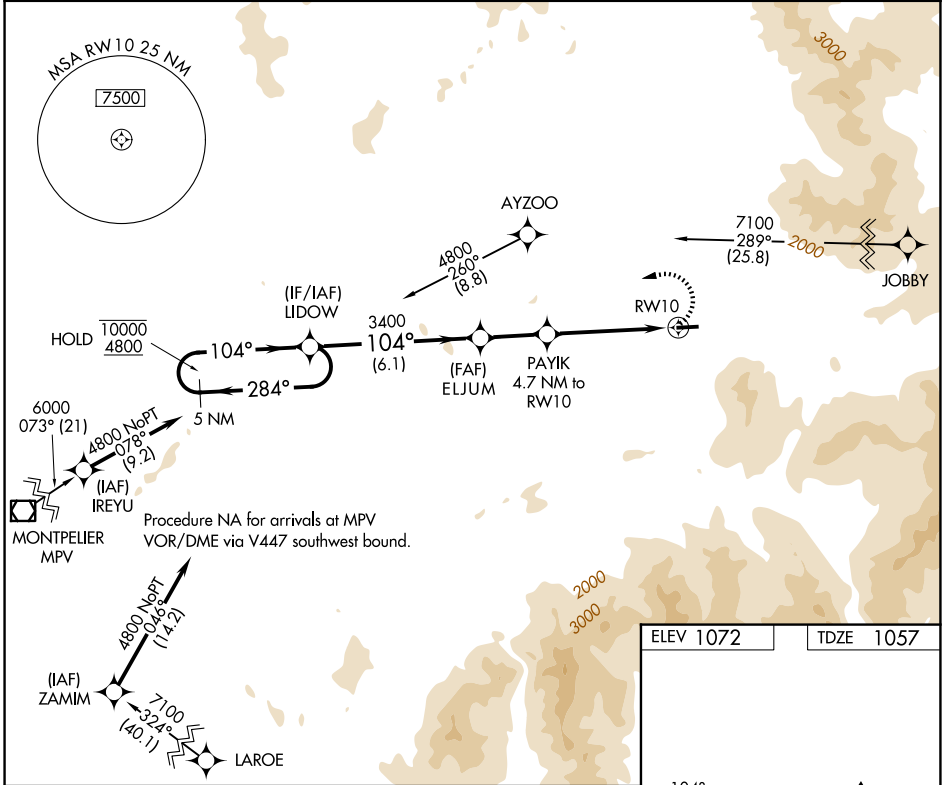
RNP APCH - GPS.

⚠ Rwy 10 helicopter visibility reduction below 3/4 SM NA. Circling Rwy 28 NA at night. Circling NA south of Rwy 10-28. When local altimeter setting not received, use CDA altimeter setting and increase all MDAs 60 feet. VDP NA when using CDA altimeter setting.

⚠ -28°C CDA altimeter setting.

MISSED APPROACH: (Do not exceed 220K until LIDOW) Climbing left turn to 4800 direct LIDOW and hold, continue climb-in-hold to 4800.

| | | |
|------------------------|-------------------------------------|---------------------------------|
| ASOS 118.525 | BOSTON CENTER 135.7 282.2 | UNICOM 122.8 (CTAF) 0 |
|------------------------|-------------------------------------|---------------------------------|



| CATEGORY | A | B | C | D |
|----------|------------|-----------------|-------------------------------|----|
| LNAV MDA | 1940-1 1/4 | 883 (900-1 1/4) | 1940-2 1/2 883 (900-2 1/2) | NA |
| CIRCLING | 1940-1 1/4 | 868 (900-1 1/4) | 2080-3 1008 (1100-3) | NA |

ELEV 1072 TDZE 1057

REIL Rwy 10 and 28 0

MIRL Rwy 10-28 0

NE-1, 14 MAY 2026 to 11 JUN 2026

NE-1, 14 MAY 2026 to 11 JUN 2026