

WAAS CH 65629 W15A	APP CRS 152°	Rwy Ldg 6500 TDZE 11 Apt Elev 15
--	------------------------	---

RNAV (GPS) RWY 15

LAKE CHARLES RGNL (LCH)

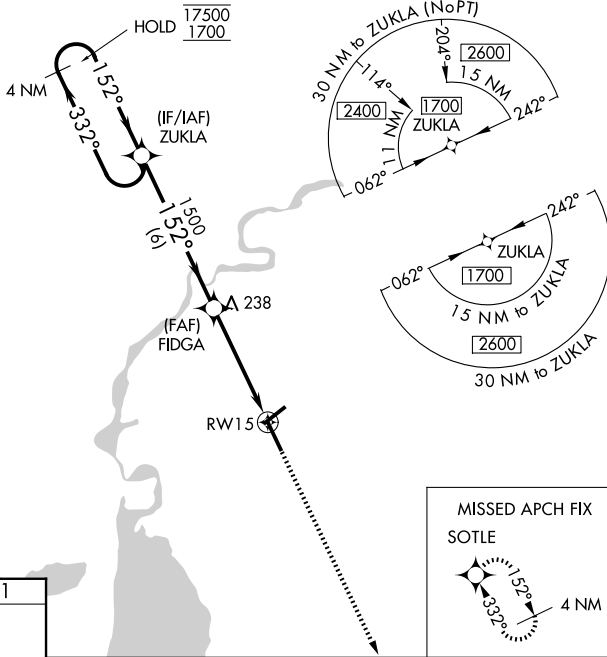
RNP APCH - GPS.

⚠ For uncompensated Baro-VNAV systems, LNAV/VNAV NA below -3°C or above 43°C.
ASR For inop ALS, increase LNAV/VNAV all Cats visibility to RVR 4500 and LNAV Cats C and D visibility to 1 3/8 SM.
 * RVR 1800 authorized with use of FD or AP or HUD to DA.



MISSED APPROACH:
Climb to 1900 direct SOTLE and hold.

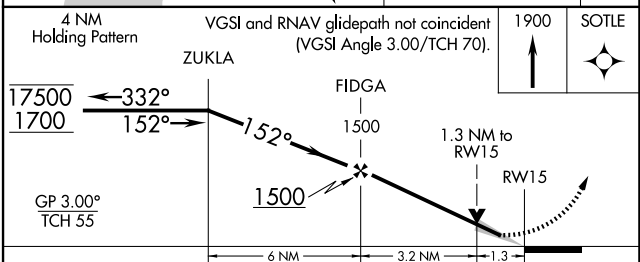
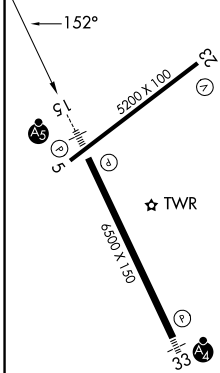
ATIS 118.75	LAKE CHARLES APP CON* 119.35 353.75	LAKE CHARLES TOWER* 120.7 (CTAF) 257.8	GND CON 121.8	UNICOM 122.95
-----------------------	---	--	-------------------------	-------------------------



SC-4, 14 MAY 2026 to 11 JUN 2026

SC-4, 14 MAY 2026 to 11 JUN 2026

ELEV 15	D	TDZE 11
---------	----------	---------



CATEGORY	A	B	C	D
LPV DA *		211/24	200 (200-1/2)	
LNAV/VNAV DA		300/24	289 (300-1/2)	
LNAV MDA	500/24	489 (500-1/2)	500/50	489 (500-1)
CIRCLING	500-1	485 (500-1)	580-1 1/2 565 (600-1 1/2)	680-2 665 (700-2)

REIL Rwys 5 and 23
 MIRL Rwy 5-23
 HIRL Rwy 15-33