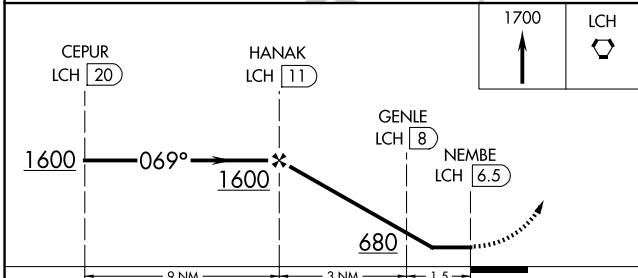
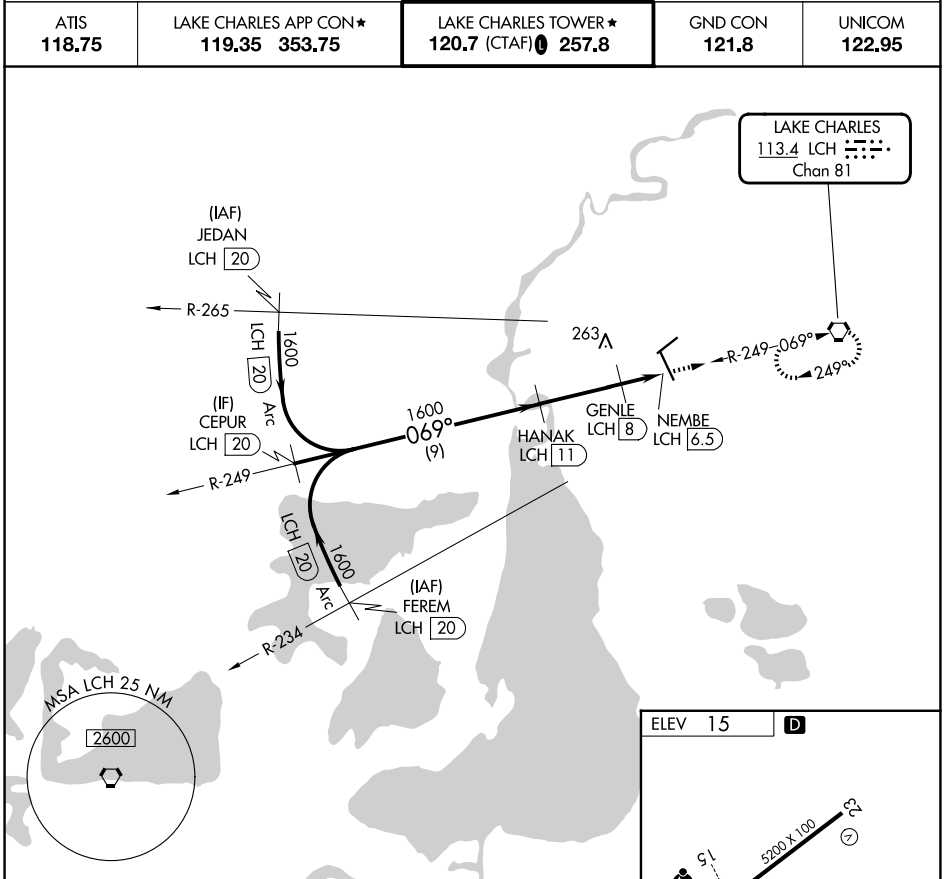


VORTAC LCH 113.4 Chan 81	APP CRS 069°	Rwy Idg TDZE Apt Elev N/A N/A 15
---------------------------------------	------------------------	--

VOR-B
LAKE CHARLES RGNL (LCH)

DME required.		MISSED APPROACH: Climb to 1700 direct LCH VORTAC and hold.		
ATIS 118.75	LAKE CHARLES APP CON* 119.35 353.75	LAKE CHARLES TOWER* 120.7 (CTAF) 257.8	GND CON 121.8	UNICOM 122.95



ELEV 15	D
REIL Rwy 5 and 23	33
MRL Rwy 5-23	33
HIRL Rwy 15-33	33

CATEGORY	A	B	C	D
CIRCLING	500-1	485 (500-1)	580-1½ 565 (600-1½)	680-2 665 (700-2)

SC-4, 14 MAY 2026 to 11 JUN 2026

SC-4, 14 MAY 2026 to 11 JUN 2026