

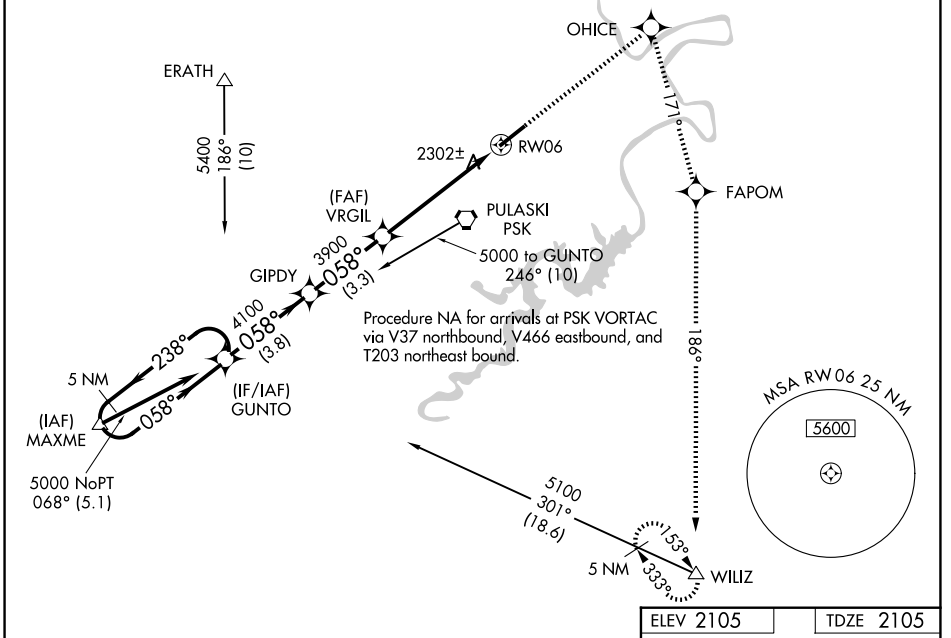
WAAS CH 87015 W06A	APP CRS 058°	Rwy Ldg TDZE Apt Elev	6201 2105 2105
----------------------------------------	------------------------	-----------------------------	-------------------------------------------

RNAV (GPS) RWY 6

NEW RIVER VALLEY (PSK)

RNP APCH.		<p>For uncompensated Baro-VNAV systems, LNAV/VNAV NA below -19°C or above 44°C. When local altimeter setting not received, use Blacksburg altimeter setting and increase all DA 36 feet, and all MDA 40 feet. VDP and Baro-VNAV NA when using Blacksburg altimeter setting. Inop table does not apply to LPV all Cats and LNAV Cats A and B. For inop MALSR, increase LNAV Cat C visibility to 1/4 SM. Circling NA for Cat D northwest of Rwy 6-24.</p>	
AWOS-3 127.375	ROANOKE APP CON 126.0 339.8	ROANOKE CLNC DEL 121.7	UNICOM 122.7 (CTAF)

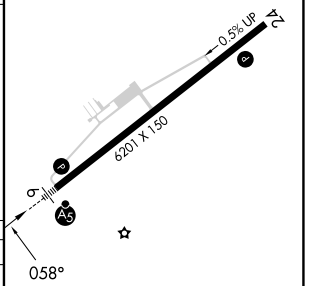
MALSR
 MISSED APPROACH: Climb to 6000 direct OHICE and right turn via track 171° to FAPOM and via track 186° to WILIZ and hold.



NE-3, 14 MAY 2026 to 11 JUN 2026

NE-3, 14 MAY 2026 to 11 JUN 2026

ELEV 2105		TDZE 2105	
5 NM Holding Pattern		OHICE FAPOM WILIZ	
<p>5000 ← 238° 058° →</p> <p>GP 3.00° TCH 58</p>		<p>VGSI and RNAV glidepath not coincident (VGSI Angle 3.00/TCH 58).</p> <p>* LNAV only.</p>	
<p>GUNTO</p> <p>GIPDY</p> <p>VRGIL 3900</p> <p>RW06</p>		<p>*1.3 NM to RW06</p> <p>3.8 NM 3.3 NM 4.1 NM 1.3 NM</p>	
CATEGORY	A	B	C
LPV DA	2305-1		200 (200-1)
LNAV/ VNAV DA	2597-1¼		492 (500-1¼)
LNAV MDA	2560-1		455 (500-1)
CIRCLING	2620-1 515 (600-1)	2680-1 575 (600-1)	2780-2 675 (700-2)
			2780-2¼ 675 (700-2¼)



HIRL Rwy 6-24

REIL Rwy 24