

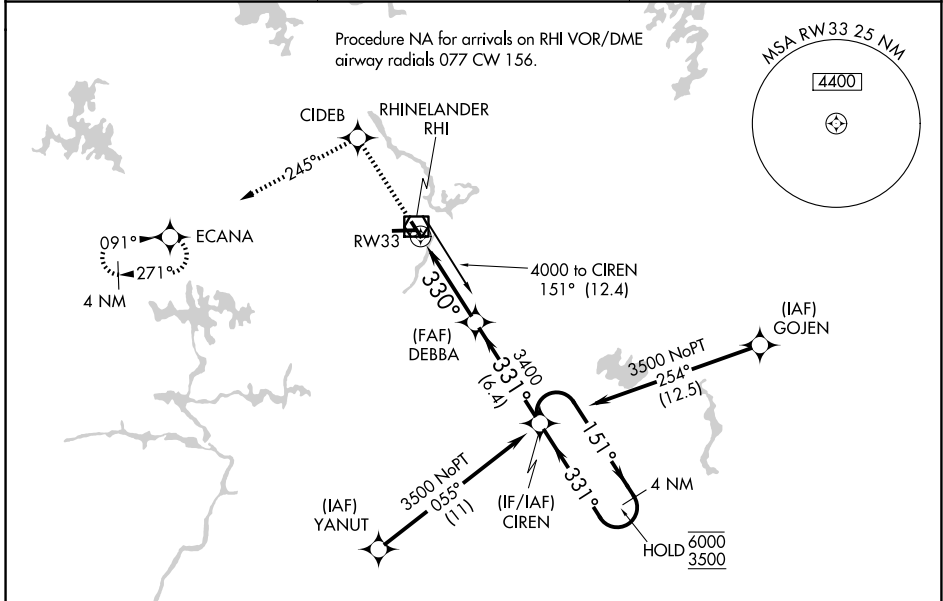
WAAS CH 69407 W33A	APP CRS 330°	Rwy Ldg TDZE Apt Elev	5201 1611 1623
--	------------------------	-----------------------------	---

RNAV (GPS) RWY 33

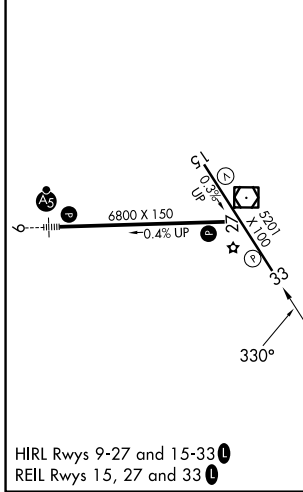
RHINELANDER/ONEIDA COUNTY (RHI)

RNP APCH - GPS.	MISSED APPROACH: Climb to 4000 direct CIDEB and on track 245° to ECANA and hold.
<p>▼ For uncompensated Baro-VNAV systems, LNAV/VNAV NA below -18°C or above 54°C.</p> <p>▲ Rwy 33 helicopter visibility reduction below ¾ SM NA.</p>	

ASOS 126.825	MINNEAPOLIS CENTER 133.65 281.5	UNICOM 123.0(CTAF) 0
------------------------	---	--------------------------------



ELEV 1623	D	TDZE 1611
-----------	----------	-----------



4000	CIDEB	tr 245°	ECANA	VGSI and RNAV glidepath not coincident (VGSI Angle 3.00/TCH 27).
				CIREN 4 NM Holding Pattern
			DEBBA 3400	151° → 6000 ← 331° 3500
			RW33	1.5 NM to RW33
				GP 3.00° TCH 50
				1.5 NM 4 NM 6.4 NM
CATEGORY	A	B	C	D
LPV DA		1861-1	250 (300-1)	
LNAV/VNAV DA		1920-1	309 (300-1)	
LNAV MDA	2100-1	489 (500-1)	2100-1 ³ / ₈	489 (500-1 ³ / ₈)
CIRCLING	2100-1 477 (500-1)	2260-1 637 (700-1)	2260-1 ³ / ₄ 637 (700-1 ³ / ₄)	2280-2 657 (700-2)

EC-3, 14 MAY 2026 to 11 JUN 2026

EC-3, 14 MAY 2026 to 11 JUN 2026