

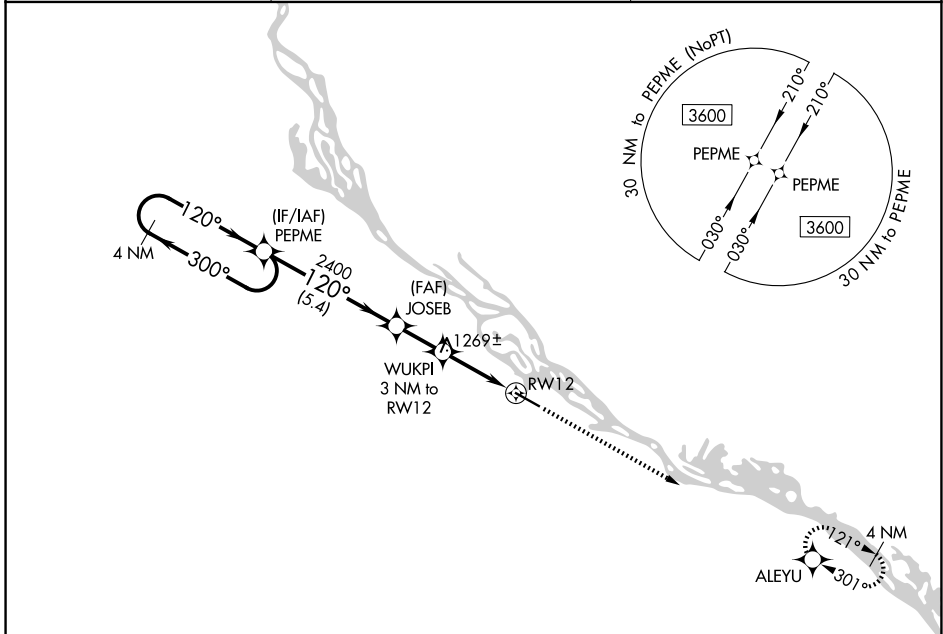
APP CRS	Rwy Ldg	5199
120°	TDZE	656
	Apt Elev	656

RNAV (GPS) RWY 12

WINONA MUNI/MAX CONRAD FLD (ON A)

<p>⚠ Rwy 12 helicopter visibility reduction below 3/4 NA. DME/DME RNP-0.3 NA.</p> <p>❄ -29°C</p>	<p>MISSED APPROACH: Climb to 3500 direct ALEYU and hold.</p>
--	--

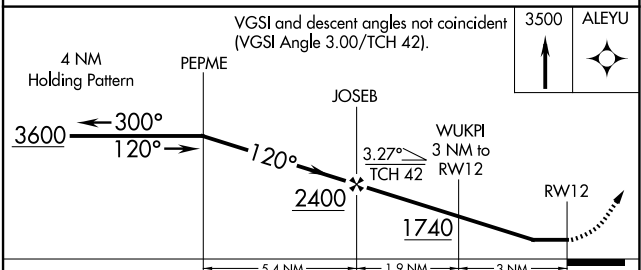
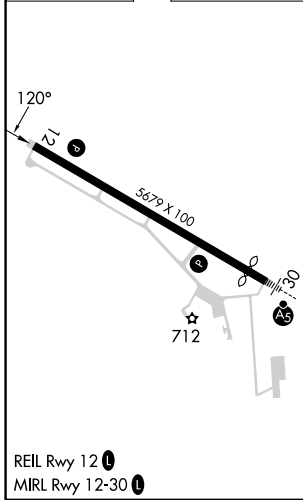
<p>AWOS-3 118.075</p>	<p>MINNEAPOLIS CENTER 128.6 363.0</p>	<p>UNICOM 122.8 (CTAF) 1</p>
----------------------------------	--	---



NC-1, 14 MAY 2026 to 11 JUN 2026

NC-1, 14 MAY 2026 to 11 JUN 2026

ELEV 656	D	TDZE 656
----------	----------	----------



CATEGORY	A	B	C	D
LNAV MDA	1520-1 864 (900-1)	1520-1¼ 864 (900-1¼)	1520-2½ 864 (900-2½)	864 (900-2½)
CIRCLING	1560-1¼ 904 (1000-1¼)	1580-1¼ 924 (1000-1¼)	1780-3 1124 (1200-3)	1980-3 1324 (1400-3)

RNAV (GPS) RWY 12