

WAAS CH 40329 W30A	APP CRS 300°	Rwy Ldg TDZE Apt Elev	5199 656 656
--	------------------------	-----------------------------	---

RNAV (GPS) RWY 30

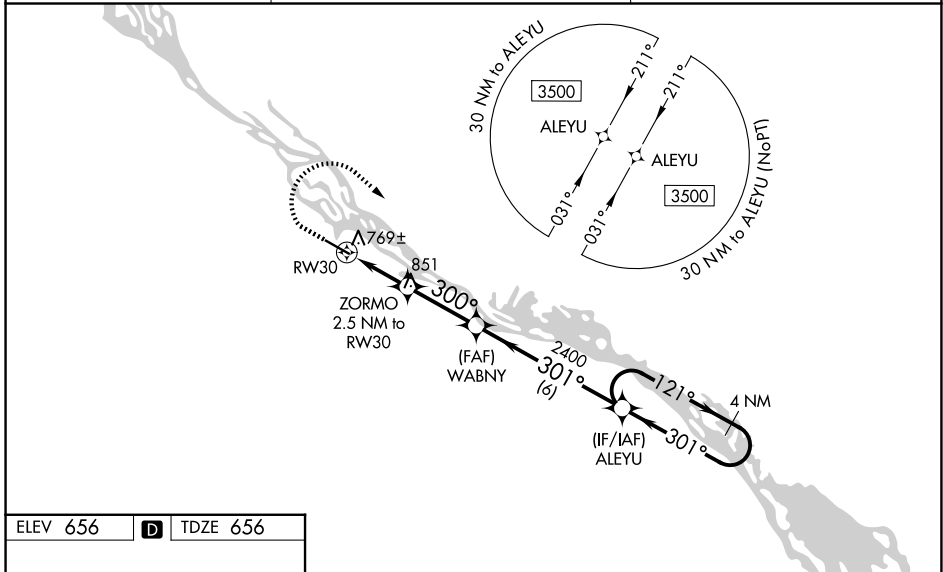
WINONA MUNI/MAX CONRAD FLD (0N1)

⚠ For uncompensated Baro-VNAV systems, LNAV/VNAV NA below -16°C (4°F) or above 54°C (130°F). DME/DME RNP-0.3 NA.
⚠ When local altimeter setting not received, use La Crosse altimeter setting and increase all LPV DA to 1064 feet and visibility 1/8 mile all Cats, all LNAV/VNAV DA to 1193 and visibility 1/8 mile all Cats, and all MDA 60 feet, increase LNAV Cat C/D and Circling Cat B visibility 1/4 mile. For inop ALS when using La Crosse altimeter setting, increase LPV all Cats visibility to 1 3/8 mile. For inop ALS when using La Crosse altimeter setting, increase LPV all Cats visibility to 1 3/8 mile, and LNAV Cats C/D visibility to 2 mile. Baro-VNAV and VDP NA when using La Crosse altimeter setting.

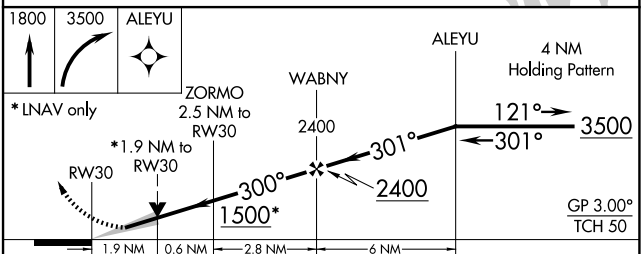
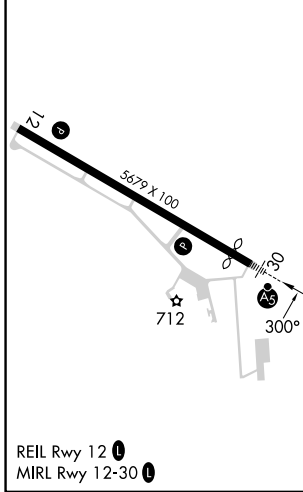


MISSED APPROACH:
 Climb to 1800 then climbing right turn to 3500 direct ALEYU and hold.

AWOS-3 118.075	MINNEAPOLIS CENTER 128.6 363.0	UNICOM 122.8 (CTAF) 0
--------------------------	--	---------------------------------



ELEV 656	D	TDZE 656
----------	----------	----------



CATEGORY	A	B	C	D
LPV DA		1011-3/4	355 (400-3/4)	
LNAV/VNAV DA		1140-1 1/8	484 (500-1 1/8)	
LNAV MDA	1280-1/2	624 (700-1/2)	1280-1 3/8	624 (700-1 3/8)
CIRCLING	1560-1 1/4 904 (1000-1 1/4)	1600-1 1/4 944 (1000-1 1/4)	1780-3 1124 (1200-3)	1980-3 1324 (1400-3)

NC-1, 14 MAY 2026 to 11 JUN 2026

NC-1, 14 MAY 2026 to 11 JUN 2026