

LOC I- FDK 110.3	APP CRS 229°	Rwy Ldg 5819
		TDZE 297
		Apt Elev 306

ILS or LOC RWY 23

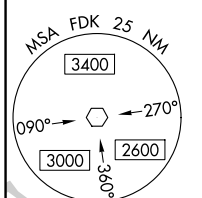
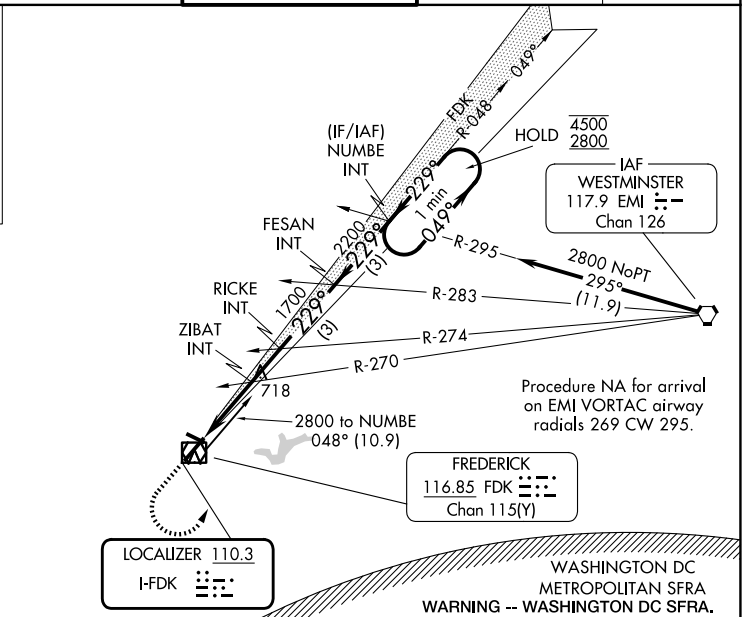
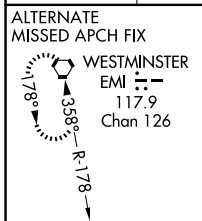
FREDERICK MUNI (F'DK)

⚠ Circling Rwy 30 NA at night. Rwy 23 helicopter visibility reduction below ¼ SM NA. For inop ALS, increase S-ILS 23 Cat A/B visibility to 1½ SM. For inop ALS, increase S-LOC 23 Cat C/D visibility to 2½ SM. ZIBAT fix minimums: Inop table does not apply to S-LOC 23 Cats C/D.

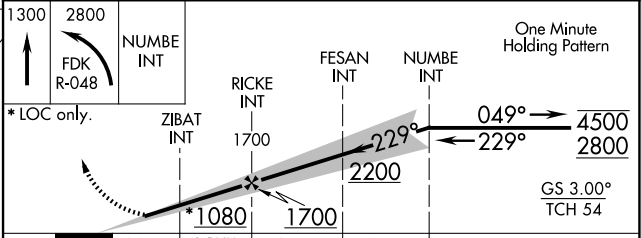
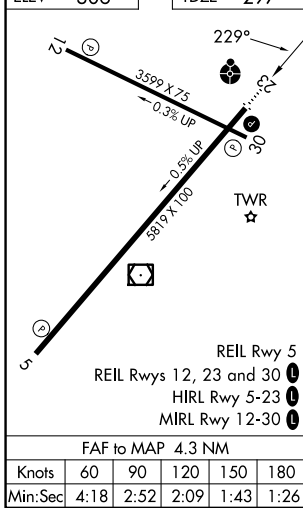
ODALS

MISSED APPROACH: Climb to 1300 then climbing left turn to 2800 on FDK VOR R-048 to NUMBE INT and hold.

ATIS 124.875	POTOMAC APP CON 126.1 338.25	FREDERICK TOWER ★ 132.4 (CTAF) 0	GND CON 127.425	UNICOM 122.95
------------------------	--	--	---------------------------	-------------------------



ELEV 306	TDZE 297
----------	----------



CATEGORY	A	B	C	D
S-ILS 23	689-1 392 (400-1)			
S-LOC 23	1080-¾ 783 (800-¾)	1080-1 783 (800-1)	1080-2	783 (800-2)
CIRCLING	1080-1 774 (800-1)	1080-1¼ 774 (800-1¼)	1100-2½ 794 (800-2½)	1140-2¾ 834 (900-2¾)
ZIBAT FIX MINIMUMS (DUAL VOR RECEIVERS REQUIRED)				
S-LOC 23	1020-¾ 723 (800-¾)	1020-2		723 (800-2)
CIRCLING	1020-1	714 (800-1)	1100-2¼ 794 (800-2¼)	1140-2¾ 834 (900-2¾)

NE-3, 14 MAY 2026 to 11 JUN 2026

NE-3, 14 MAY 2026 to 11 JUN 2026