

|  |                        |                             |   |
|--|------------------------|-----------------------------|---|
| WAAS<br>CH <b>82132</b><br><b>W17A</b> | APP CRS<br><b>172°</b> | Rwy Ldg<br>TDZE<br>Apt Elev | <b>5800</b><br><b>1234</b><br><b>1234</b> |
|--|------------------------|-----------------------------|---|

# RNAV (GPS) RWY 17

AUSTIN MUNI (AUM)

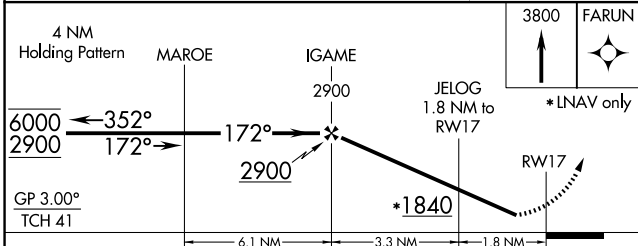
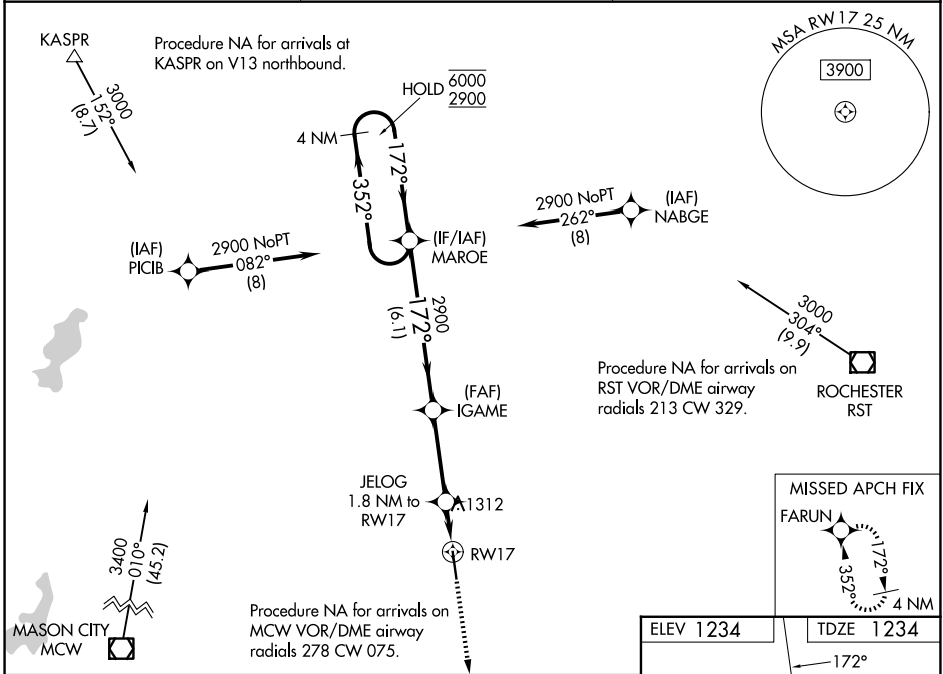
RNP APCH.  
 ⚠ Rwy 17 helicopter visibility reduction below 3/4 SM NA.  
 For uncompensated Baro-VNAV systems, LNAV/VNAV NA below -17°C or above 54°C.

MISSED APPROACH:  
 Climb to 3800 direct FARUN and hold.

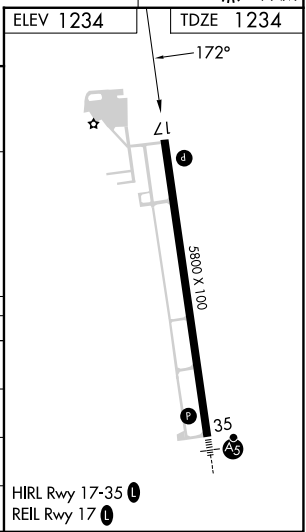
AWOS-3PT  
**120.675**

ROCHESTER APP CON\*  
**119.8 251.125**

UNICOM  
**122.7** (CTAF) **0**



| CATEGORY     | A      | B           | C                       | D                     |
|--------------|--------|-------------|-------------------------|-----------------------|
| LPV DA       |        | 1484-1      | 250 (300-1)             |                       |
| LNAV/VNAV DA |        | 1505-1      | 271 (300-1)             |                       |
| LNAV MDA     |        | 1580-1      | 346 (400-1)             |                       |
| CIRCLING     | 1700-1 | 466 (500-1) | 1800-1½<br>566 (600-1½) | 1880-2<br>646 (700-2) |



NC-1, 14 MAY 2026 to 11 JUN 2026

NC-1, 14 MAY 2026 to 11 JUN 2026